



Prepared by Shannon Gobell  
Consultant to Measure Up! 2008

#### **DUMBLEYUNG TOWN HALL**

32 Harvey St, DUMBLEYUNG WA 6350  
Queries and bookings to Shire of Dumbleyung  
Ph: 08 9863 4012  
Fax: 08 9863 4146  
Email: [ceoao@dumbleyung.wa.gov.au](mailto:ceoao@dumbleyung.wa.gov.au)

#### **LOCAL GOVERNMENT**

Shire of Dumbleyung  
32 Harvey St,  
DUMBLEYUNG WA 6350  
PO Box 99, DUMBLEYUNG WA 6350

Ph: 08 9863 4012  
Fax: 08 9863 4146  
Email: [ceoao@dumbleyung.wa.gov.au](mailto:ceoao@dumbleyung.wa.gov.au)

#### **CITY/TOWN DESCRIPTION**

Dumbleyung is a town 267 kilometres southeast of Perth in the West Australian wheatbelt. Dumbleyung is known for its grain and livestock production and various biodiversity industries including: cereals, summer crops, oil mallees, yabbies, emus, poultry and trout. It is also a sanctuary for birdlife and extremely popular for water sports and picnics. The Dumbleyung shire covers an area of 2551 sq km, and services the two towns of Dumbleyung and Kukerin. The population of the area is approximately 700.

The area's main attraction is Lake Dumbleyung, the largest semi-permanent natural stretch of inland water in Western Australia. The lake is approximately 13 kilometres long and 6.5 kilometres wide, covering an area of 5200 hectares. It is famous as the site of the late Donald Campbell's historic World water speed record set on 31 December 1964, in the Bluebird reaching a remarkable speed of 444.66 km/h (276.3 mph). This made him the fastest man both on land and on water.

A memorial to Donald Campbell's achievements is located on Pussy Cat Hill on the lake shoreline, also offering excellent views over the lake. While the lake is used for aquatic recreation today, in the early 1900s there were race tracks on it and it was used for picnics. During the 1920s and 1930s, although the lake did not fill to overflowing, there were years when it had enough water for swimming and boating. A record wet year in 1946 saw the lake fill completely.

In recent times the lake has suffered greatly from the salination which has affected the whole of the wheatbelt. The shorelines, which the early settlers described as being so rich and fertile, are now characterised by forests of dead trees standing like forlorn skeletons. Most of the lake is part of a water bird conservation area. In March 1985 a total of 24 839 birds were counted on the lake.

Dumbleyung itself is a service centre with a post office, school, tavern, public library, Caravan Park and other facilities. Both the tavern and roadhouse offer counter meals.

EXTERIOR PHOTOS



*Main Entry Doors to Venue*



*3D view of front of Venue  
(Car Park on Left of Venue)*



*Rear of Stage (Load in from Truck)*



*Side of Venue  
(possible load in through side exit doors)*



*Stairs to rear of stage (Load In Access)*



*Access to Kitchen (up ramp)*

## GENERAL DESCRIPTION

The venue is a fairly traditional old town hall style venue with a stage. The venue was constructed in 1926 and has had various additions made to it over the years. The venue is primarily used by the local Dumbleyung Gymnastics Club now. Whilst set up in Gymnastics mode most of the time this space can be still fairly easily be used in performance mode.

The venue comprises a main hall with stage, a bar space, a commercial kitchen, dressing room space, gymnastics storage space, Entry Foyer and male & female toilets. Both the bar and the kitchen have servery windows that open out onto the main hall. The foyer is not really usable as a separate space, it really only serves as an entry lobby given its long skinny nature and small size. The dressing room is at the rear of the stage and whilst there is only one of them it is of reasonable size given the size of the stage.

The venue is permitted to hold 260 people under the Heath Act 1911, Health (Public Buildings) Regulations 1992, but as there are only 110 chairs the venue may be limited by this for seated shows.

As mentioned the venue has approximately 110 dark blue coloured Magnum plastic chairs (non-interlocking), chair trolley, 5 x 6' laminated Trestle Tables (cream coloured).

The venue has a timber board floor and the stage is also a timber board floor and both are in average condition. The venue has no air conditioning or heating and hence can be hot in summer and cold in winter.

The acoustics in the venue are average, with a long reverb time existing within the space. The venue struggles to get a good blackout currently but this could be fairly easily rectified with a few black curtains strategically placed. Most of the venues windows do have blinds however some light bleed is still present when the blinds are down.

As mentioned above the venue has both male & female toilets, however the toilets adjoin directly onto the main hall and this may present some small issues for theatrical style performances. There is no disabled toilet facility in this venue or easy disabled access into the venue.

There is only minimal lighting equipment available in this venue and this is mostly of a very old nature. There is no audio system in place at all currently. No other technical equipment or staging equipment is available.

Venue load in is from the car park at the rear of the venue up the steps on rear stage right and onto the stage floor. Alternatively you could load in from front of the venue, through the front double doors, through the foyer and through the main hall double doors and onto the main hall floor in front of the stage or through the side car park, through two double sets of doors and onto the auditorium floor.

There is no suitable entertainment power available. There is 1 x 20amp 4pin 3phase outlet on the stage left wall on stage but this will not suit any currently hire-able technical equipment. There is 1 x 10amp double GPO on the OP wall on stage and 1 x 10amp double GPO on the PS wall on stage. There are also some single phase GPO's around the main hall.

## TOURING TIPS

- Tour all your own technical equipment, there is very little suitable for performance style lighting and nothing at all for performance style audio available in the venue.
- Tour all your own event/show staffing including any crew for load in/out.
- Bring your own blacks for window blackout purposes, if you require a blackout.
- There is very limited accommodation in town, so book early.
- Design your lighting around a limited amount of lighting bars onstage as there is only 1 LX bar on stage located immediately above the FOH curtain.
- This venue has a very low ceiling on stage and hence acts requiring height are better off creating a performance space on the floor of the auditorium.
- Be aware that the toilets adjoin directly to the side of the auditorium with no airlock.
- As the foyer has no air lock, preventing noise and light entering the venue, ensure you put in place your desired patron late entry requirements.
- Check with council re all ticket selling locations or requirements.
- The stage has a large mirror on the upstage rear wall and no upstage curtain to pull in front of it and hence the touring company would be advised to tour their own upstage rear curtain and facilities to hang it, i.e. truss and winch ups.

## INTERIOR PHOTO'S



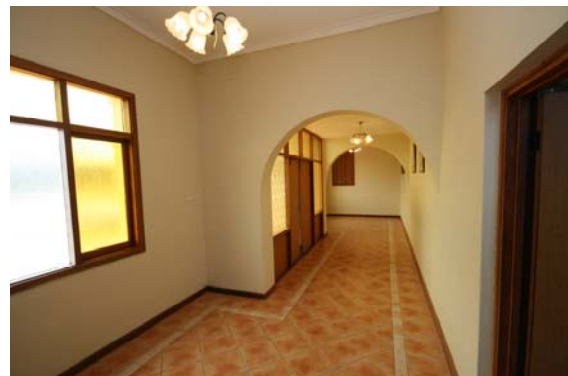
*Town Hall - looking towards main Entry end of hall (from stage)*



*Town Hall - looking towards stage (from entry end of room)*



*Stage in Dumbleyung Town Hall*

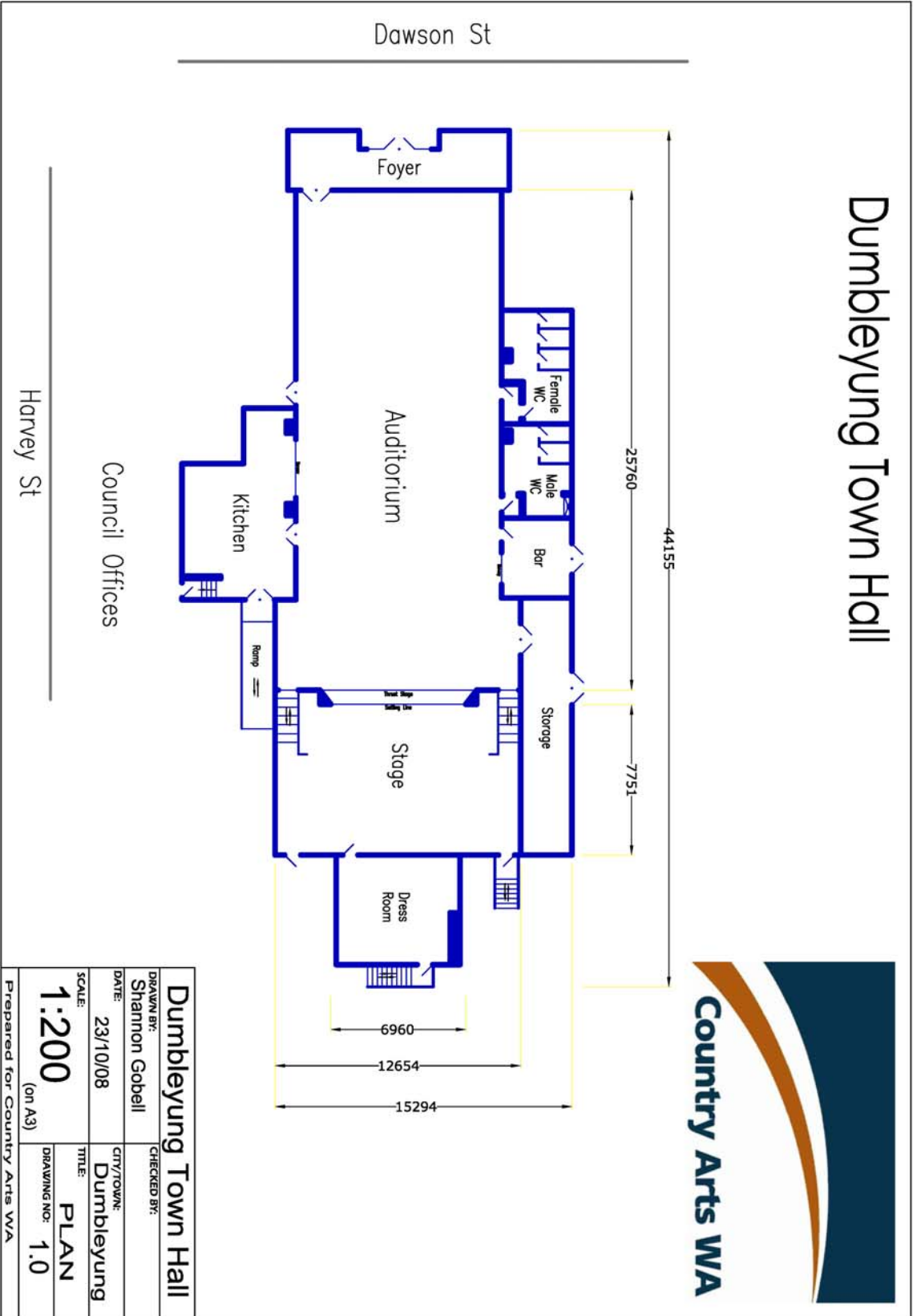


*Dumbleyung Town Hall Entry Foyer (main hall thru doors in foreground on right) (entry doors on left in centre of foyer)*

**DIMENSIONS - All dimensions in mm**

|   |  |
|---|--|
| STAGE DEPTH<br>(setting line to back wall)                    | 7940                                     |
| STAGE WIDTH (inc wings)                                       | 12835                                    |
| STAGE HEIGHT  | 1165                                     |
| PROMPT WING   | 2700                                     |
| OPPOSITE PROMPT WING  | 2700                                     |
| STAGE THRUST (setting line to front of thrust stage or apron) | 800                                      |
| STAGE FLOOR TO CEILING<br>Centre                              | 3500                                     |
| Outside   | 2300                                     |
| STAGE FLOOR TO LX BARS<br>(or available rigging points)       | 3405 (Lx 1 directly above FOH curtain)   |
| PROSCENIUM WIDTH  | 6960                                     |
| PROSCENIUM HEIGHT   | 2935                                     |
| STAGE TO BORDER HEIGHT  | N/A                                      |
| AUDITORIUM DEPTH  | 25760                                    |
| AUDITORIUM WIDTH  | 12654 (at stage end) 10675 (at rear end) |
| AUD FLOOR TO CEILING<br>Centre                                | 4740                                     |
| Outsides  | 4010                                     |
| (to bottom of roof support bar)                               | 4020                                     |
| AUD FLOOR TO FOH LX BARS                                      | 4646 (FOH 1)                             |

# Dumbleyung Town Hall



|                              |                |             |
|------------------------------|----------------|-------------|
| <b>Dumbleyung Town Hall</b>  |                | CHECKED BY: |
| DRAWN BY:                    | Shannon Gobell |             |
| DATE:                        | 23/10/08       | CITY/TOWNS: |
|                              |                | Dumbleyung  |
| SCALE:                       | <b>1:200</b>   | TITLE:      |
|                              | (on A3)        | <b>PLAN</b> |
|                              |                | DRAWING NO: |
|                              |                | <b>1.0</b>  |
| Prepared for Country Arts WA |                |             |

## FLYING FACILITIES & DRAPES

|                          |   |
|--------------------------|---|
| FLYING SYSTEM            | No flying system installed  |
| MASKING                  | None  |
| FOH CURTAIN              | 1 x Burgundy coloured velvet curtain in good condition. The House Curtain is on a standard tab track and is operated from PS. The curtain is slightly stiff on the track. |
| LEGS & BORDERS           | None  |
| OTHER DRAPES or CURTAINS | 1 x black cotton Prompt Side panorama masking drape<br>1 x black cotton Opposite Prompt panorama masking drape  |
| CYCLORAMA                | None  |

## LIGHTING FACILITIES

|  |  |
|--|--|
| 3 PHASE POWER AND LOCATION                           | One (1) x 20Amp 4pin 3phase outlet is available on the PS onstage wall.  |
| OPERATING POSITION (S)                               | No set position, use location at rear of venue or from side of stage.  |
| LIGHTING DESK  | Dynalite 12ch, 2 preset, analogue lighting desk  |
| DIMMERS AND LOCATION                                 | 1 x Dynalite Studio 12, sitting on PS floor behind Pros Arch   |
| WIRED LIGHTING BARS & NUMBER OF CIRCUITS & LOCATIONS | 1 x FOH Lighting Bar, with 5 circuits.<br>1 x onstage Lighting Bar, LX1, with 6 circuits.  |
| PATCHING FACILITIES                                  | There are only 11 circuits in this venue and these are available on loose leads back in prompt corner behind the Pros Arch.  |
| LAMP STOCK   | 4 x 500w Fresnels (no name brand)<br>2 x Patt123 500w Fresnels<br>2 x CCT 500w Fresnels<br>2 x CCT 500w 18/35 Profiles (with shutters)<br>1 x Selecon Zoom 22/40 Profile (with only 1 shutter)<br><i>*No Gel Frames for any lamps</i><br><i>*No Barndoors for any Fresnels</i> |
| ALTERNATIVE ONSTAGE LIGHTING POSITIONS               | None.  |
| ALTERNATIVE FRONT LIGHTING POSITIONS                 | None   |
| TYPE OF CEILING/<br>POSSIBLE FIXING POINTS           | Mostly pressed tin ceiling, plasterboard closer to the stage end.  |
| BLACKOUT   | Is possible with some additional blacking out over windows without blinds.   |
| LADDERS  | None   |
| ONSTAGE 10/15AMP GPO OUTLETS                         | 1 x 10amp double GPO on OP wall<br>1 x 10amp double GPO on PS wall   |
| FOH 10/15AMP GPO OUTLETS                             | 3 x 10amp double GPO's on OP wall<br>3 x 10amp double GPO's on PS wall   |
| HOUSELIGHTS  | 10 x Dimmable incandescent wall lights, dimmed from rear auditorium wall   |
| WORKING LIGHTS                                       | 10 x double fluro's, switched from rear auditorium wall  |
| HAZER/SMOKE MACHINE                                  | None   |

## SOUND FACILITIES

|                        |   |
|------------------------|---|
| OPERATING POSITION (S) | No set position, use location at rear of venue or from side of stage. |
| SOUND DESK             | None  |
| AMPLIFIERS             | None  |
| SPEAKERS               | None  |
| FOLDBACK               | None  |
| FOLDBACK AMPS          | None  |
| MICROPHONES            | None  |
| MIC STANDS             | None  |
| CD OR CASSETTE PLAYERS | None  |
| SENDS                  | None  |

## COMMUNICATIONS

|            |   |
|------------|---|
| TALK-BACK  | None  |
| TELEPHONES | None  |
| INTERNET   | None available to touring parties, but the town has Next G and hence Bigpond wireless modems will work. |

## ONSTAGE FACILITIES

|                |   |
|----------------|---|
| CROSSOVER      | Crossover behind upstage curtain track, approx 1650mm wide.   |
| WING SPACE     | There is very limited amount of wing space available, especially due to the access stairs from the auditorium being cut into the wing floor area. |
| TREADS TO FOH  | There are built in treads either side of the stage that lead from the stage to the auditorium.  |
| LADDER         | None  |
| ROSTRA         | None  |
| BLUE WORKLIGHT | None  |

## FRONT OF HOUSE FACILITIES (FOH)

|                  |   |
|------------------|---|
| SEATING          | There are approx 110 x Magnum dark blue plastic chairs available for audience seating in the venue. These are non-interlocking. (Plus chair trolley)  |
| BOX OFFICE       | N/A   |
| BAR              | There is a space for a bar located just off the main hall. It has a single door domestic fridge, Kambrook 5L urn and double sink.   |
| KITCHEN          | Yes, there is a commercial kitchen with a 1 single glass door commercial fridge, 1 x commercial oven with a 6 gas burner cook top unit, 2 domestic rangehoods, 1 domestic microwave, 3 x Kambrook 5L urns, double sink and plenty of bench space. There is a servery window with shutter between the kitchen the main hall. |
| TOILETS          | Male, female toilets are available, adjoining straight onto the side of the main hall.  |
| AIR CONDITIONING | None  |
| HEATING          | None  |

## BACKSTAGE FACILITIES

|                |   |
|----------------|---|
| GREEN ROOM     | N/A   |
| DRESSING ROOMS | There is one dressing room at the rear of the stage |
| TOILETS        | None  |
| SHOWERS        | None  |
| MIRRORS        | Yes, there are in the dressing room                 |
| LAUNDRY        | No  |
| IRONING        | No  |

## BUMP-IN ACCESS

|                    |  |
|--------------------|--|
| ACCESS DESCRIPTION | Load in from rear car park, up stairs and through single door onto stage. Alternatively you could load in from side car park through two sets of double doors and onto the auditorium floor.                               |
| LOADING DOOR SIZE  | The double doors are 1604mm wide and 2042mm high.  |
| EXTERIOR LIGHTING  | There are minimal flood lights around the exterior of the venue and none over the side load in doors.  |
| PARKING            | Plenty of parking is available around the venue in one of two car parks at the side or rear of the venue. There is also plenty of space to move trucks and buses around if required. Other parking is available on-street. |
| STORAGE            | There is very limited storage space for touring parties given that in performance mode the storage spaces will be full of Gymnastics equipment.  |

## EMERGENCY SYSTEMS

|                    |   |
|--------------------|---|
| SMOKE ALARMS       | None  |
| SPRINKLER SYSTEMS  | None  |
| FIRE EXTINGUISHERS | Yes, various extinguishers are fitted.  |
| FIRE HOSES         | None  |
| EMERGENCY EXITS    | There are three emergency exits from the main hall space.                               |
| EXIT SIGNS         | Illuminated exit signs are fitted to all three emergency doors in the main hall.        |
| MEDICAL CONTACT    | There is no nominated medical contact for the venue. Please see medical contacts below. |

## PRE-SALES

|                       |   |
|-----------------------|---|
| TICKETING SYSTEM      | Check with council for ticket selling agencies in town.   |
| ADVERTISING POSITIONS | None in the venue   |
| POSTERS/BANNERS       | As above.   |
| LOCAL PUBLICATIONS    | The Great Southern Herald and the Wagin Argus circulate in the Dumbleyung area.   |
| LOCAL RADIO           | There are a number of radio stations covering the Dumbleyung area in both AM & FM bands including ABC Radio 96.3 (FM), Radio National 6RN 1296 (AM), 6GS 1422 (AM). For further information on radio stations in the area please refer to the following websites:<br><a href="http://www.ausradiostations.com/fmwa.html">http://www.ausradiostations.com/fmwa.html</a><br><a href="http://www.ausradiostations.com/amwa.html">http://www.ausradiostations.com/amwa.html</a> |
| WORD OF MOUTH         | Word of mouth is a beneficial way to publicise something in Dumbleyung. Providing media releases to council, the roadhouse and the pub offers a quick and cost effective solution to spreading the word.  |

## OTHER IMPORTANT CONTACTS

|                         |  |
|-------------------------|--|
| HOSPITAL/DOCTOR         | Dumbleyung has a District Health Care Centre with visiting Doctor every second Wednesday from 1.00pm to 5.00pm, phone the doctor's surgery in Wagin (9861 1633) for appointments. The following services are also available through Dumbleyung Out Patient Service Accident & Emergency Service 24 hours, 7 days a week (Contact Hospital 9863 4022).              |
| PHARMACY                | A pharmacy is located in Wagin at 52 Tudhoe Street, Wagin and can be contacted on 08 9861 1245.  |
| HARDWARE                | Dumbleyung has a rural merchandise store the closet hardware store is located at Wagin and can be contacted on 08 9861 1087.   |
| COUNCIL                 | Local Shire Office: 08 9863 4012   |
| POLICE, FIRE, AMBULANCE | For all emergency services contact: 000<br>Local police in Wagin can be contacted on: 08 9861 1211.  |
| TAXI                    | There are no taxis in the Dumbleyung area.   |
| NEWSAGENT               | Dumbleyung Newsagency is located at 50 Absolon Street and can be contacted on 08 9863 4035.  |
| VISITOR CENTRE          | There are a number of Visitor Centres located in the region, at Katanning 08 9821 2634, Narrogin 9881 2064, and Wagin 08 9861 1232.  |
| ACCOMODATION            | The Dumbleyung Tavern located at Bartram Street provides accommodation and can be contacted on 08 9863 4028. There is also the Dumbleyung Caravan Park 08 9863 4028 and farm stay option at Peppercorn Cottage 08 9864 1012. For further options visit:<br><a href="http://www.dumbleyung.wa.gov.au/services.htm">http://www.dumbleyung.wa.gov.au/services.htm</a> |