



Prepared by Shannon Gobell
Consultant to Measure Up! 2008

KALGOORLIE TOWN HALL

Cnr of Hannan & Wilson Sts, KALGOORLIE WA 6430
Queries and bookings to City of Kalgoorlie Boulder
PO Box 2042, BOULDER WA 6432
Ph: 08 9021 9600
Fax: 08 9021 6113
Email: mailbag@kalbould.wa.gov.au

LOCAL GOVERNMENT

City of Kalgoorlie-Boulder
577 Hannan St,
KALGOORLIE WA 6430
PO Box 2042, BOULDER WA 6432

Ph: 08 9021 9600
Fax: 08 9021 6113
Email: mailbag@kalbould.wa.gov.au

CITY/TOWN DESCRIPTION

Kalgoorlie-Boulder is a Western Australian city located 595 kilometres east-northeast of Perth located in the Eastern Goldfields. By car the trip up the Great Eastern Highway will take around 6.5 hours but by plane it's only around an hour of flying time. You can also get to Kalgoorlie on one of two trains and by Coach regularly from Perth and the Eastern states.

The city was founded in 1893 during the Yilgarn-Goldfields gold rush, and is located close to the so-called "Golden Mile". Kalgoorlie-Boulder officially became a city with the amalgamation of the Town of Kalgoorlie and the Shire of Boulder in 1989. It has a population of just over 30,000 making it the largest urban centre in the Goldfields-Esperance region and the fifth-largest in Western Australia.

The discovery of gold by Paddy Hannan in 1893 led to one of Australia's great gold rushes. Since then Kalgoorlie-Boulder has developed into a major service hub for Western Australia's active resource industry. Dominated by magnificent historic architecture, Hannan and Burt Streets provide a focus for modern cafés, restaurants and accommodation, hotels, clubs and watering holes.

The Boulder and Kalgoorlie Town Halls, both built in 1908, are well preserved and exemplars of the architectural style of the prosperous gold rush days. The Kalgoorlie Town Hall is home to the Kalgoorlie Goldfields Visitors Centre, and the Boulder Town Hall houses the rare and famous Philip Goatcher Stage Curtain, believed to be the last remaining example of its kind.

Kalgoorlie has a dry climate with hot summers and cool winters. The average annual rainfall is around 260 mm on an average of 65 days and there can be considerable variation from year to year. January is the hottest month with an average maximum temperature of 33.6°C, but temperatures above 40.0°C occur nearly once a week when hot, dry and the north to northeasterly winds arrive. By contrast winters are cool with July average maximum and minimum temperatures being 16.5°C and 4.8°C respectively. Cold, wet days with a maximum below 12.0°C occur about once every winter and overnight temperatures can fall below freezing during a typical winter.

EXTERIOR PHOTOS



*Main Entry Doors to Venue
(Tourism Office through doors on left)*



Front of Venue



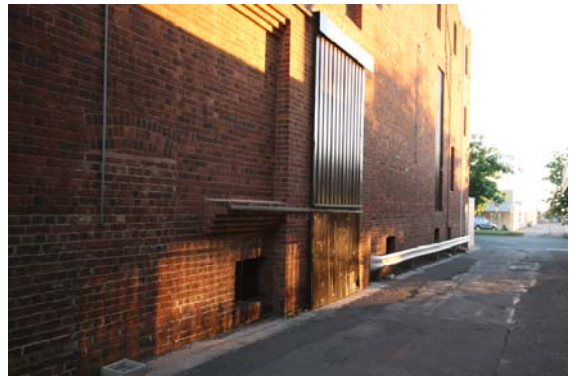
*Side of Venue
(possible load in through alternate side
exit doors, up ramp)*



3D of Venue



*Rear 3D of Venue
(Load In from Coles driveway to rear Stage)*



Rear Loading Doors at Kalgoorlie Town Hall

GENERAL DESCRIPTION

This is an amazing old Town Hall and a landmark of its era. Interestingly both the Kalgoorlie Town Hall and the Boulder Town Hall opened within a very short period of each other after a race to the finish. This Edwardian grand old town hall was opened in 1908 and served as a centrepiece to the town at the time and still does in many ways today with the local Tourism office housed within now. Whilst much of the professional theatre content is now held at the Goldfields Art Centre this venue still plays a role in presenting many events, dinners, balls, functions and the occasional stage show.

The venue comprises a large flat floor auditorium with stage and a tiered balcony seating area. The venue is used for many different purposes now-a-days and hence also houses the local Tourism Office, Council offices (for parking inspectors and the records/heritage departments), Mayoral Chambers, council staff kitchen, councillor's prep/meeting room and the local council chamber. The venue also has a Banquet Hall/Art Gallery, bar, entry foyers, upstairs foyer, downstairs foyer, dressing rooms, under stage space, ticket box/cloak room, BOH storage rooms, set/scenery dock, commercial kitchen, kitchen dock area, and male and female toilets.

Whilst a permit under the Heath Act 1911, Health (Public Buildings) Regulations 1992 stating numbers the venue is officially permitted could not be located, there are 224 fixed theatre seats in the balcony and 356 new padded chairs for the floor area of the auditorium, hence this should be used as the governing factor for maximum allowable persons (580 people) in the venue until clarified.

As mentioned above the venue has 152 fixed padded cast iron theatre seats (original heritage style, cream frame with maroon padded seat) in a traditional raked theatre format in the balcony and then a further 356 steel framed, brown material padded chairs for the floor area of the auditorium. These seats are all in excellent condition. Further to this there are 28 rows of 4 old vinyl on steel frame seats and 14 rows of 6 old vinyl on steel frame seats in storage.

The floor in the venue and on stage are polished hardwood timber floors and on the whole they are in very good condition. The stage floor, once further upstage, does tend to fall away in maintenance with several deeper scratches as this section of the stage is used for general storage.

The venues acoustics are generally OK for such a large space, but louder or heavily amplified shows may want to address the reverb time that does exist but hanging curtains where needed for acoustic dampening. The venue does not have a blackout during the day for theatrical purposes and, whilst possible, it would be hard to achieve due to the height and positions of the windows that would need the attention.

The venue has male and female toilets and whilst these have not been built for disabled access they have been adapted to cater for the disabled. The toilets are located in the front foyer of the venue and compared to the numbers of people the venue can hold they would seem small in size for their expected use. The venue has been adapted generally for disabled access with most protruding door jams removed, an access ramp at the side of the venue installed and a new lift in the foyer to allow access from the ground floor to the second floor.

The venue has a variety of very old lighting equipment and no sound equipment of any note for functions or theatrical use. Most lighting equipment is in poor condition with no current electrical safety tags and missing parts (colour frames, safety chains) rendering it mostly unsuitable for professional use.

GENERAL DESCRIPTION continued

The venue load in can be achieved from the driveway at the rear of the venue through the rear stage loading door and straight onto stage. However this rear stage entry loading door appears to be much higher above the ground than the average truck height and due to the neighbouring car park bordering the driveway the truck would need to remain side on to the loading door, hence it would prove to be very difficult to negotiate a load in from here. The alternative load in can be achieved from Wilson St so long as the council can block off the on street parking alongside the venue for the period of the load in/out. The truck would need to park length ways on Wilson street and equipment would need to be unloaded onto the footpath, up the disabled access ramp on the side of the venue, through the double exit doors to the airlock, through the double electric doors to the hallway and then down the hallway and through another set of double exit doors and in onto the auditorium floor in front of the stage. It is also worth noting that the stage in this venue is quite high above the venue floor (1260mm) and hence if using the alternative load in and gear is required on stage you may want to consider carrying it up onto stage via one of the two fixed staircases leading to the stage or via the mobile staircase that can be positions anywhere across the front edge of the stage.

There is entertainment power available on the Prompt side wall of the stage area (in the wing). There is 1 x 32amp 5pin 3phase outlet and 1 x 55amp 5pin 3phase outlet on the wall. Further to this it may be possible to hard wire straight into the adjacent stage distribution board using a licensed electrician if a larger power supply is required. There are 2 x 10amp double GPO's on the PS wall on stage and 2 x 10amp double GPO's on the OP wall on stage. There is also 2 dip traps built into the stage (1 on Prompt side and 1 on OP side) with 2 x 10amp double GPO's in each trap. Additional single phase power is available under the front edge of the stage. Further to the stage power there are 2 x 10amp double GPO's on each wall in the auditorium.

This venue also has a Banquet Room for smaller functions, weddings, dinners, etc and a kitchen and bar are located adjacent to this Banquet room. The Banquet Room is a well finished and beautifully restored space hosting many art works around the walls.

As noted above the venue has a commercial kitchen fitted with a commercial oven and 8 burner gas cook-top, deep fryer, commercial range hood, 5 dish Bain Marie/warmer, 2 glass door fridge, Birko 20L urn, sinks and plenty of bench top. The bar is fitted with a 3 glass door fridge, glass washer and single sink area, with countertop service area.

There are many dressing room spaces within this venue some of which have been restored and other of which still need further work. Some dressing rooms also container full make up mirrors with lights, benches, sinks and toilet facilities.

TOURING TIPS

- Tour all of your own technical equipment, as the venues equipment is not fit for use.
- Ensure any venue equipment that is used carries a current electrical test tag.
- You could potentially source some crew for load in and out or skilled show crew from the Goldfields Arts Centre.
- This is a very large theatre with a very high ceiling and hence your lighting designs for any theatrical show should take this into consideration.
- There is no FOH LX point and therefore you should consider bringing whatever lifters, riggers, lighting towers and trussing you require to create FOH lighting positions.
- The onstage rigging system is old and out of date and the recommendation is to not use this system and tour in your own riggers, motors, trusses, rigging or even ground support system to rig onstage.
- Be aware that the toilets are quite small for any larger sized audience you may cater for in the venue and this may slow down interval periods, etc.
- Tickets can be sold through the Goldfields Arts Centre. Check with council for other potential ticket selling agencies in town.
- Check carefully with council what the venues emergency management procedures are and what staff (ushers, technicians, duty managers, etc) may be required for managing public in the venue at any given time.

INTERIOR PHOTO'S



Town Hall - looking towards main entry end of Auditorium (from stage)



Town Hall - looking towards stage (from balcony/entry end of Auditorium)



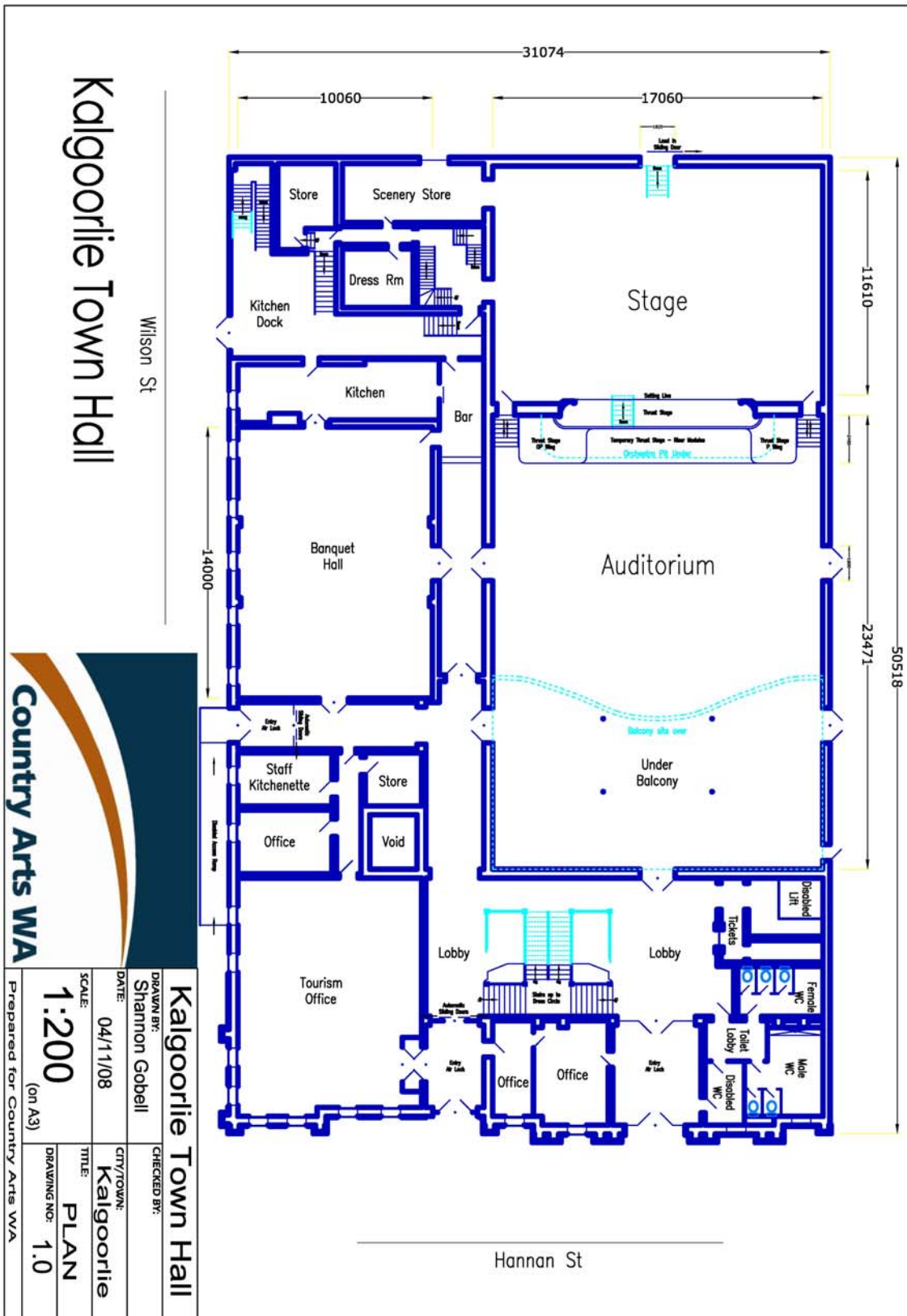
Stage in Kalgoorlie Town Hall



Banquet Room (door to entry passage way in background)

DIMENSIONS - All dimensions in mm

STAGE DEPTH (setting line to back wall)	11610
STAGE WIDTH (inc wings)	17060
STAGE HEIGHT	1260
PROMPT WING	2250
OPPOSITE PROMPT WING	2985
STAGE THRUST (setting line to front of thrust stage or apron)	3070
STAGE FLOOR TO CEILING	
Downstage Centre	15865
Downstage Outside	15865
Upstage Centre	15695
Upstage Outside	15695
(to catwalk downstage)	6795
(to catwalk upstage)	6585
STAGE FLOOR TO LX BARS (or available rigging points)	6750 (old hand fly lines at trim)
PROSCENIUM WIDTH	8275
PROSCENIUM HEIGHT	8605
STAGE TO BORDER HEIGHT	N/A
AUDITORIUM DEPTH	23471
AUDITORIUM WIDTH	17060
AUD FLOOR TO CEILING	
Front Centre	10300
Front Outsides	9610
(to bottom of balcony)	3390
AUD FLOOR TO FOH LX BARS	N/A



Kalgoorlie Town Hall



Kalgoorlie Town Hall		CITY/TOWN:	Kalgoorlie
DRAWN BY:	Shannon Gobel	CHECKED BY:	
DATE:	04/11/08	TITLE:	PLAN
SCALE:	1:200 (on A3)	DRAWING NO.:	1.0
Prepared for Country Arts WA			

FLYING FACILITIES & DRAPES

FLYING SYSTEM	Hemp lines, no counter-weighting, tied off to running board on both OP and PS fly gallery catwalks. 17 hemp hand lines in total, 3 pick-ups per line.
MASKING	1 x velveteen, embroidered, teaser, approx 9000mm x 9000mm on old hemp rope hand winch on OP fly gallery catwalk.
FOH CURTAIN	1 x light green coloured cotton/wool blend curtain in ok condition. The House Curtain is hand drawn on a steel wire cable and pulley runner system and is operated from PS. It is very hard (stiff) to open and close.
LEGS & BORDERS	6 x Black Cotton Drill legs, approx 9000mm high x 3000mm wide, on lines 5, 7, & 9, rigged with approx 1000mm of return. No borders are fitted.
OTHER DRAPES or CURTAINS	Mid-stage black cotton drape in poor & dusty condition, approx 9000mm high x 10200mm wide, on line 13.
CYCLORAMA	None

LIGHTING FACILITIES

3 PHASE POWER AND LOCATION	One (1) x 32amp 5pin 3phase outlet and one (1) x 55amp 5pin 3phase outlet are available on the Prompt side wall in the wing on stage. Other house Q Engineering racks are hard wired in to 3phase.
OPERATING POSITION (S)	No dedicated position is available hence set up either on the side of stage or at rear of the Auditorium on the floor (on prompt side).
LIGHTING DESK	1 x Q Engineering Qset 24ch Analogue Lighting Console
DIMMERS AND LOCATION	2 x Q Engineering B series Dimmers are located on the Prompt Side mezzanine floor.
WIRED LIGHTING BARS & NUMBER OF CIRCUITS & LOCATIONS	2 x Lighting lines above stage with approx 8 circuits each; in non-traditional lighting positions (these were not accessible for further investigation at the time of this inspection). FOH Dome has 2 circuits available (no ID) Three circuits are available at the PS & OP Lighting Perch positions (no ID).
PATCHING FACILITIES	There is a 24 circuit Q Engineering patch bay above the dimmers on the mezzanine in Prompt Corner of the stage.
LAMP STOCK	19 x Patt20 150w floods in poor condition, no colour frames, no safety chains 4 x Strand axial profiles in OK condition, no colour frames, no safety chains 4 x Strand 500w profiles (long throw) in poor condition, no colour frames, no safety chains
ALTERNATIVE ONSTAGE LIGHTING POSITIONS	None
ALTERNATIVE FRONT LIGHTING POSITIONS	1 x perch position either side of stage, approx 13000mm from stage
TYPE OF CEILING/ POSSIBLE FIXING POINTS	Pressed metal ceiling, no other fixing/rigging points are currently available.
BLACKOUT	The venue does not currently have a blackout. To achieve a blackout during the day masking would need to be applied to 4 onstage windows and 5 windows in the auditorium. A very tall ladder would be required.

LIGHTING FACILITIES continued

LADDERS	2 x 10' Carbon Fibre 'A' frame ladders 1 x 10' Timber extension ladder
ONSTAGE 10/15AMP GPO OUTLETS	2 x 10amp double GPO's on OP wall 2 x 10amp double GPO's on PS wall 2 x 10amp double GPO's in OP dip trap in stage floor 2 x 10amp double GPO's in PS dip trap in stage floor
FOH 10/15AMP GPO OUTLETS	2 x 10amp double GPO's on OP wall 2 x 10amp double GPO's on PS wall 10amp double GPO's on under side of the front edge of stage
HOUSELIGHTS	14 arm chandelier in the centre of the roof on Q Engineering dimming system with control in Prompt corner on stage and Prompt rear wall in the auditorium.
WORKING LIGHTS	6 x discharge lamps switched from PS on stage.
HAZER/SMOKE MACHINE	None

SOUND FACILITIES

OPERATING POSITION (S)	No dedicated position is available hence set up either on the side of stage or at rear of the Auditorium on the floor (on prompt side).
SOUND DESK	None
AMPLIFIERS	None
SPEAKERS	None
FOLDBACK	None
FOLDBACK AMPS	None
MICROPHONES	None
MIC STANDS	None
CD OR CASSETTE PLAYERS	None
SENDS	None

COMMUNICATIONS

TALK-BACK	None
TELEPHONES	As this building is still currently used by various council services there are many phone connections throughout the building. Whilst there are no phones on them there are many phone lines run to various dressing rooms and stage spaces. Negotiate with council for a phone line where required if needed.
INTERNET	None available to touring parties, but the town has Next G and hence Bigpond wireless modems will work.

ONSTAGE FACILITIES

CROSSOVER	Yes, cross over is available upstage of last black tab curtain.
WING SPACE	There is reasonable amount of wing space available: 2250mm on Prompt side. 2985mm on Opposite Prompt side.
TREADS TO FOH	There are built in treads to the Auditorium on both sides of the stage leading to side of stage areas. There is also a portable set of steps that can be placed in front of the thrust stage at any point.
LADDER	Ladders as per list in lighting section.
ROSTRA	4 x 2400mm x 1200mm @ 315 high timber rostra
BLUE WORKLIGHT	None

FRONT OF HOUSE FACILITIES (FOH)

SEATING	The venue has 152 fixed padded cast iron theatre seats (original heritage style, cream frame with maroon padded seat) in a traditional raked theatre format in the balcony. A further 356 steel framed, brown material padded chairs for the floor area of the auditorium are available.
BOX OFFICE	A small ticket window is available near the lift in the foyer.
BAR	There is a small bar facility with a 3 glass door fridge and a glass washer next to the Banquet Room and Kitchen (adjacent to the main hall).
KITCHEN	There is a commercial Kitchen in this town hall complex located next to the Banquet Room. The kitchen has a commercial oven with 8 burner gas cook-top, deep fryer, commercial range hood, 5 dish Bain Marie/warmer, 2 glass door fridge, Birko 20L urn, sinks and plenty of bench top.
TOILETS	Male, female and disabled toilets are available. These can be found in the foyer.
AIR CONDITIONING	None
HEATING	None

BACKSTAGE FACILITIES

GREEN ROOM	There is a space that can be used as a Green Room within the Dressing Room area.
DRESSING ROOMS	There are a multitude of dressing room spaces, some with benches, make up mirrors with lights and some with toilets.
TOILETS	In some dressing rooms.
SHOWERS	None
MIRRORS	Yes, there are mirrors in most dressing rooms.
LAUNDRY	No
IRONING	No

BUMP-IN ACCESS

ACCESS DESCRIPTION	The venue load in can be achieved from the driveway at the rear of the venue through the rear stage loading door and straight onto stage. However this rear stage entry loading door appears to be much higher above the ground than the average truck height and due to the neighbouring car park bordering the driveway the truck would need to remain side on to the loading door, hence it would prove to be very difficult to negotiate a load in from here. The alternative load in can be achieved from Wilson St. Unload onto the footpath, up the disabled access ramp on the side of the venue, through the double exit doors to the airlock, through the double electric doors to the hallway and then down the hallway and through another set of double exit doors and in onto the auditorium floor in front of the stage.
LOADING DOOR SIZE	The narrowest doors, via disabled ramp, on the side of the venue are 1112mm wide x 2380mm high. The rear loading dock door is 1800mm wide x approx 6000mm high.
EXTERIOR LIGHTING	There are minimal lights on the external of the building.
PARKING	There is no dedicated car park available. Please use one of the many paid car parks in the area or on-street parking.
STORAGE	There is a reasonable amount of storage space for touring parties. The scenery dock could be used for roadcase storage.

EMERGENCY SYSTEMS

SMOKE ALARMS	There are smoke alarms fitted throughout the venue.
SPRINKLER SYSTEMS	None
FIRE EXTINGUISHERS	There are several different types of fire extinguishers fitted throughout the venue as per BCA requirements.
FIRE HOSES	There are several fire hose reels fitted throughout the venue as per BCA requirements.
EMERGENCY EXITS	There are 5 exit doors leading from the auditorium, plus a further two exit doors from the balcony area. All exit doors are double sized in width and carry emergency exit hardware.
EXIT SIGNS	All emergency exit doors within the venue have a maintained illuminated exit sign fitting above them.
MEDICAL CONTACT	There is no nominated medical or first aid contact for the venue. Please see medical contacts below.

PRE-SALES

TICKETING SYSTEM	Tickets can be sold from the Goldfields Arts centre or check with the local council for further ticket selling agency options.
ADVERTISING POSITIONS	Display boards in the tourism office and the foyer of the venue can be used to display upcoming show information. Flyers could be made available from within the tourism office at the venue.
POSTERS/BANNERS	There are no external locations for banners on the building but posters could be displayed in the foyer of the venue. Contact council for banner positions around Kalgoorlie-Boulder.
LOCAL PUBLICATIONS	The Golden Mail, Goldfields Express and Kalgoorlie Miner all circulate within the Kalgoorlie-Boulder area.
LOCAL RADIO	There are a number of AM and FM radio stations in Esperance including: Vision FM 1481(AM), ABC Goldfields 648(AM), Radiowest 981(am), Hot FM 97.9 (FM), ABC News Radio 100.3(FM), Triple J 98.7(FM). For further information on radio stations in the area, please refer to the following websites: http://www.ausradiostations.com/fmwa.html http://www.ausradiostations.com/amwa.html
WORD OF MOUTH	Word of mouth can be a beneficial way to publicise something. Providing media releases to Council, the local newspapers, library and the Tourist Centres within the Shire offers a quick and cost effective solution to spreading the word.

OTHER IMPORTANT CONTACTS

HOSPITAL/DOCTOR	Kalgoorlie Regional Hospital is located in Piccadilly Street, Kalgoorlie and can be contacted on 08 9080 5888. The closest doctor to the venue is Dr RF Austin, located at 335 Hannan St, Kalgoorlie and can be contacted on 08 9021 3988.
PHARMACY	Wizard warehouse Pharmacy is located at 249 Hannan St, Kalgoorlie and can be contacted on 08 9021 2453.
HARDWARE	There is a Bunnings Hardware store at 139 Boulder Road, Kalgoorlie, which can be contacted on 08 9091 0700.
COUNCIL	Local shire office can be located at 577 Hannan St, Kalgoorlie WA 6430 and can be contacted on 08 9021 9600.
POLICE, FIRE, AMBULANCE	For all emergency services contact: 000 Local Police in Kalgoorlie are located at 31/33 Dugan St, Kalgoorlie and can be contacted on 08 9091 7022.
TAXI	There are two taxi companies in Kalgoorlie-Boulder. Goldfields Taxi Cabs can be contacted on 08 9091 5233 or Twin City Cabs can be contacted on 08 9021 2177.
NEWSAGENT	Kalgoorlie Newsagency is located at 304 Hannan St, Kalgoorlie and can be contacted on 08 9021 1949.
VISITOR CENTRE	The Kalgoorlie-Goldfields Visitor Centre is conveniently located in the Kalgoorlie Town Hall on the corner of Hannan & Wilson Sts. The Centre can be contacted on 08 9021 1966.
ACCOMODATION	The Quest Yelverton Kalgoorlie (serviced apartments) is located at 210 Egan St, Kalgoorlie, and can be contacted on 08 9022 8181 or emailed at questkalgoorlie@questapartments.com.au . This accommodation is very close by to the Kalgoorlie Town Hall and the main street in Kalgoorlie. There are a myriad of accommodation options available in Kalgoorlie though, given the towns strong tourism focus and size, and for further options please contact the local visitor centre on 08 9021 1966 or visit: http://www.kalgoorlietourism.com/accommodation.asp