



Prepared by Shannon Gobell
Consultant to Measure Up! 2008

KUKERIN PIONEERS MEMORIAL HALL

Kukerin Road Sth, Kukerin WA 6352
Queries and bookings to Alex Adams
Ph: 08 9863 4012
Fax: 08 9863 4146
Email: ceoao@dumbleyung.wa.gov.au

LOCAL GOVERNMENT

Shire of Dumbleyung
Cnr of Harvey St & Dawson St
Dumbleyung WA 6350

PO Box 99
Dumbleyung WA 6350

Ph: 08 9863 4012
Fax: 08 9863 4146
Email: ceo@dumbleyung.wa.gov.au

CITY/TOWN DESCRIPTION

Kukerin is located in the Dumbleyung Shire, approximately 267km south east of Perth, in the Wheatbelt region of Western Australia. The shire covers an area of 2551 sq km, with Kukerin being one of two main towns servicing the region, which has a total population of around 701.

The name Kukerin is thought to be a combination of the names of two sandalwood cutters - Cooke and Ring, omitting the 'g'.

Kukerin is a little wheatbelt town 41km west of the big, shallow and salty Lake Grace, which is part of a wildlife sanctuary. The area is known for its grain and livestock production.

The average summer max temperature is 31 degrees whilst the average winter max temperature is around 15 degrees with an average winter minimum of around 6 degrees.

About 39km south-west of Kukerin is Lake Dumbleyung where, in December, 1964, the late Sir Donald Campbell established a new world water speed record of 444.71km/h. With this feat, Sir Donald became the first man to hold simultaneously both the world land and water speed records. He was killed in an attempt to beat his own water speed record when his boat Bluebird crashed at Lake Coniston in England in 1967.

At 13km long and about 6.5km wide, Lake Dumbleyung is one of the largest semi-permanent stretches of inland water in Western Australia.

EXTERIOR PHOTOS



Main Entry Doors to Venue



3D Front of Venue, including parking space



*Side of Venue & Rear of Stage
(Load in from Truck)*



*Rear of Stage
(Kitchen entry through door on left)*



Plenty of parking at front of venue



*Alternative load in access to venue floor
(through double doors and into side of auditorium)*

GENERAL DESCRIPTION

The venue is your fairly typical small town hall with a stage at one end and supper room and kitchen facilities. Built in 1956 it has been, and still is, used for many different things including everything from cooking classes to local private parties and functions. As with many venues of this vintage there are a few building issues starting to appear and a distinct lack of any real modern theatre technology or event equipment, namely lighting and sound equipment.

The venue itself consists of a very small lobby entry, the main auditorium hall, kitchen, supper room and toilet facilities. The venue has had a few additions to it since the original build of the main hall with the kitchen being an obvious addition to the original building. The kitchen is reasonably well appointed to cater for functions within the space. It should also be noted even though the venue has a supper room and an entry lobby that only one event or function could be held at any given time due to noise transfer, space and available facilities. In addition to these spaces there is also an old projection booth which has been closed off from public use. This booth was not accessible at the time of this venue audit.

The venue is permitted to hold 205 patrons, as per the Form 4, Heath Act 1911, Health (Public Buildings) Regulations 1992.

The venue has approximately 130 dark blue plastic chairs, 36 light grey plastic chairs, 7 dark blue kids plastic chairs, 10 yellow kids plastic chairs and 12 green kids plastic chairs, totalling 166 adult chairs and 29 kids chairs. There is also 19 cream coloured 6' laminated trestle tables and a chair trolley for moving chairs around too.

The venue has a sealed timber board floor and wooden floor boarded stage. The floor in the auditorium was in ok condition although both the auditorium floor and stage could benefit from a sand and reseal. The venue is not air conditioned or heated.

The acoustics in the venue are quite poor with long reverb times in the space. Whilst the room is very lively in acoustic terms it would still be suitable live theatre, amplified performances and other similar things with a few small theatrical drape treatments. The venue can achieve a blackout, although not perfect, using the roll down blinds over the windows.

The venue has both male and female toilets off of the entry lobby and whilst the venue hasn't been originally built with disability access in mind it has had a disabled toilet built into the venue.

There is no professional lighting equipment in this venue. There are 4 low voltage, architectural, diachroic track light, Fresnel fittings in the standard FOH position, but clearly these cannot be used to light a theatrical production of any sort or any event/function for that matter. The venue does not have any modern dimmer systems and lighting desk though. There are 2 very old Rank Australia Model 3 dimmers though (3channel x 10amp) and whilst old and dusty they do work. There is no audio system in place.

Venue load in is via one of several entries. On both sides of the venue there are double exit doors into the auditorium main floor. It's a flat load in with only 1 step at the exit door. There are also smaller single doors upstage in both corners of the stage. There is minimal entertainment power available in the form of 1 x 32amp 5pin 3phase outlet on the prompt side wall. There are a few single phase GPO's around the stage area, mainly in Prompt corner and OP Corner. There are also a handful of 10/15amp GPO's in the main auditorium area or around the venue in general.

There are no rigging facilities either in the standard FOH position or onstage.

TOURING TIPS

- Tour all your own technical equipment as there is nothing suitable for performance style lighting and audio available in the venue.
- Tour all your own event/show staffing including any crew for load in/out.
- There is limited accommodation in the area, so book early.
- There are no lighting bars or rigging points and hence tour all of your own winch ups and rigging as required.
- Noise transfer from the other spaces including dressing rooms to the stage will be an issue to address.
- As the foyer has no air lock, preventing noise and light entering the venue, ensure you put in place your desired patron late entry requirements.
- Check with the local council re all ticket selling locations or requirements.

INTERIOR PHOTO'S



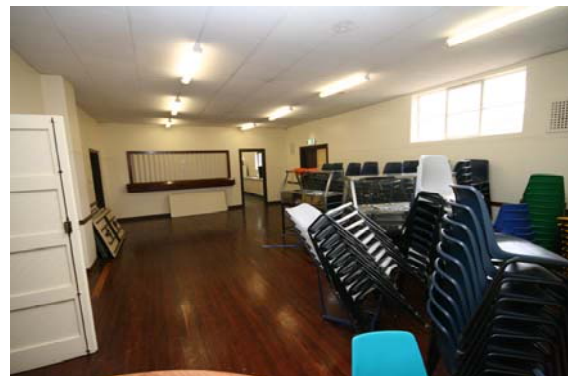
Hall - looking towards main entry & foyer end of hall (from stage)



Hall - looking towards stage (from entry & foyer end of room)



Stage in Kukerin Pioneers Memorial Hall



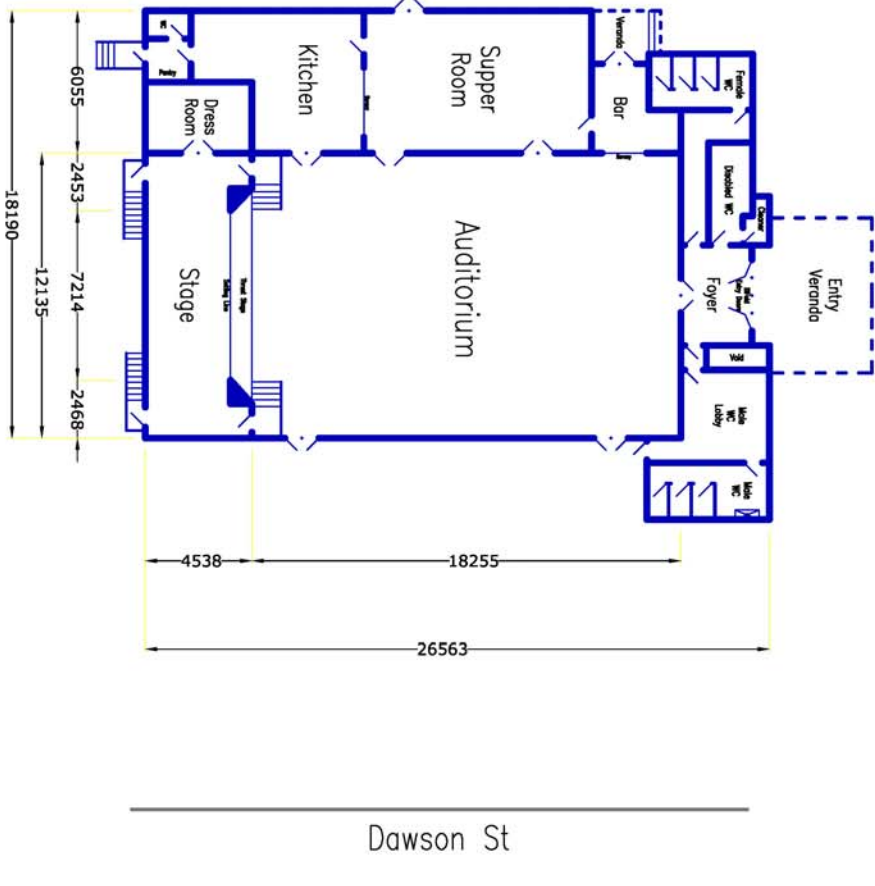
*Supper Room
(Main hall thru doors on left)
(Kitchen serving window in background)*

DIMENSIONS - All dimensions in mm

STAGE DEPTH (setting line to back wall)	3625
STAGE WIDTH (inc wings)	12160
STAGE HEIGHT	920
PROMPT WING	2100
OPPOSITE PROMPT WING	1975
STAGE THRUST (setting line to front of thrust stage or apron)	1065
STAGE FLOOR TO CEILING Centre	3830
Outside	3640
Outer wing	3250
STAGE FLOOR TO LX BARS (or available rigging points)	N/A (no LX bars in onstage this venue)
PROSCENIUM WIDTH	7215
PROSCENIUM HEIGHT	3355
STAGE TO BORDER HEIGHT	N/A (no borders installed)
AUDITORIUM DEPTH	18270
AUDITORIUM WIDTH	12160
AUD FLOOR TO CEILING Centre	4750
Outsides	4200
(to bottom of vent)	4720
AUD FLOOR TO FOH LX BARS	N/A (no LX bars installed at FOH in this venue)

Kukerin Pioneers Memorial Hall

Kukerin Ne Rd



Dawson St



Kukerin Pioneers Memorial Hall	
DRAWN BY: Shannon Gobbell	CHECKED BY:
DATE: 24/10/08	CITY/TOWNE: Kukerin
SCALE: 1:200 (on A3)	TITLE: PLAN
	DRAWING NO.: 1.0
Prepared for Country Arts WA	

FLYING FACILITIES & DRAPES

FLYING SYSTEM	No flying system installed
MASKING	No masking
FOH CURTAIN	Yes, light weight, gold coloured crushed velveteen. The House Curtain is on a standard tab operated from PS.
LEGS & BORDERS	None
OTHER DRAPES or CURTAINS	4 x Black cotton drill curtains 3500mm high x 3000mm wide. (on domestic curtain tracks in fixed positions on stage) Hand drawn only.
CYCLORAMA	None

LIGHTING FACILITIES

3 PHASE POWER AND LOCATION	One (1) x 32Amp 5pin 3phase outlet and one (1) 15Amp 5pin 3phase outlet are available on the prompt side wall.
OPERATING POSITION (S)	No set position, use location at rear of venue
LIGHTING DESK	None
DIMMERS AND LOCATION	2 x portable Rank Australia Model 3, 10A, 3ch dimmers, located in a box in the dressing room.
WIRED LIGHTING BARS & NUMBER OF CIRCUITS & LOCATIONS	None
PATCHING FACILITIES	None
LAMP STOCK	4 x architectural Diachroic 50w lamps with barndoors on fixed track at FOH
ALTERNATIVE ONSTAGE LIGHTING POSITIONS	None. Rigging would need to be professionally installed into the ceiling to create any sort of usable grid.
ALTERNATIVE FRONT LIGHTING POSITIONS	None
TYPE OF CEILING/ POSSIBLE FIXING POINTS	Plaster ceiling. No available fixing points.
BLACKOUT	Is possible, with blinds on all windows. Some minor light bleed through.
LADDERS	See onstage facilities
ONSTAGE 10/15AMP GPO OUTLETS	1 x double and 1 x single 10amp GPO in P corner 1 x double and 1 x single 10amp GPO in OP corner
FOH 10/15AMP GPO OUTLETS	1 x single 10amp GPO on front of stage 1 x double 10amp GPO on P auditorium wall 1 x single 15amp GPO on rear auditorium wall
HOUSELIGHTS	8 x incandescent wall lights with glass diffusers controlled on dimmer from Prompt corner
WORKING LIGHTS	12 x double fluro's in auditorium switched from auditorium rear wall and 2 x incandescent work lights above the stage switched from Prompt corner.
HAZER/SMOKE MACHINE	None

SOUND FACILITIES

OPERATING POSITION (S)	The auditorium floor at the back of room.
SOUND DESK	None
AMPLIFIERS	None
SPEAKERS	None
FOLDBACK	None
FOLDBACK AMPS	None
MICROPHONES	None
MIC STANDS	None
CD OR CASSETTE PLAYERS	None
SENDS	None

COMMUNICATIONS

TALK-BACK	None
TELEPHONES	None
INTERNET	None available to touring parties, but the town has Next G and hence Bigpond wireless modems will work.

ONSTAGE FACILITIES

CROSSOVER	Minimal crossover behind upstage black curtain, approx 450mm wide.
WING SPACE	There is very limited amount of wing space available.
TREADS TO FOH	There are built in stairs either side of the stage that lead from the auditorium to the stage wings.
LADDER	1 x 6' 'A' frame steel ladder
ROSTRA	None
BLUE WORKLIGHT	None

FRONT OF HOUSE FACILITIES (FOH)

SEATING	There are approx: 130 dark blue plastic chairs 36 light grey plastic chairs 29 Sebel kid plastic chairs in blue, yellow & green (Plus chair trolley)
BOX OFFICE	None
BAR	There is a bar located in the rear P corner of the auditorium.
KITCHEN	Yes, there is a commercial kitchen with a 1 large domestic fridge, 1 commercial single glass door fridge, 1 x commercial oven with a 6 gas burner cook top unit, 1 domestic 4 burner oven, 1 domestic microwave, 2 x domestic range hoods, 2 x Bain Marie, 3 x Kambrook 5L domestic urns and plenty of bench space. There is a servery window between the kitchen and the supper room.
TOILETS	Male, female and disabled toilets are available in the venues entry lobby.
AIR CONDITIONING	None
HEATING	None

BACKSTAGE FACILITIES

GREEN ROOM	None
DRESSING ROOMS	There is one very basic dressing room on prompt side of stage at stage level. There are no facilities in the dressing room though.
TOILETS	None
SHOWERS	None
MIRRORS	None
LAUNDRY	No
IRONING	None

BUMP-IN ACCESS

ACCESS DESCRIPTION	Load in is best achieved by loading in through the OP hall double exit doors and onto the auditorium floor. An alternative load in space can be achieved by loading from the rear of stage through one of two doors (one on P and one on OP) and whilst these doors do lead direct to stage level they are single sized doors and the handrails on the stairs would prevent an easy load in.
LOADING DOOR SIZE	The entry space through either of the double exit doors on the OP side of the venue are 1450mm wide x 2020mm high
EXTERIOR LIGHTING	Single incandescent lights are above each exit door.
PARKING	Plenty of parking is available in the grounds around the venue. There is also plenty of space to move trucks and buses around if required. Other parking is available on street.
STORAGE	There is no storage space for touring parties. The supper room could be used for storage if not required for other purposes.

EMERGENCY SYSTEMS

SMOKE ALARMS	No smoke alarms are fitted.
SPRINKLER SYSTEMS	None
FIRE EXTINGUISHERS	Yes, various extinguishers are fitted.
FIRE HOSES	No fire hoses are fitted.
EMERGENCY EXITS	There are three emergency exits from the main function space.
EXIT SIGNS	Illuminated exit signs are fitted to all three emergency doors in the main hall and other doors in other rooms.
MEDICAL CONTACT	There is no nominated medical contact for the venue. Please see medical contacts below.

PRE-SALES

TICKETING SYSTEM	Check with council for ticket selling agencies in town.
ADVERTISING POSITIONS	A Poster Board is available on the front wall of the venue.
POSTERS/BANNERS	As above.
LOCAL PUBLICATIONS	The Great Southern Herald and Wagin Argus cover the Kukerin township and surrounding areas.
LOCAL RADIO	There are few radio stations covering Kukerin in both AM & FM bands, for further information on radio stations in the area please refer to the following websites: http://www.ausradiostations.com/fmwa.html http://www.ausradiostations.com/amwa.html
WORD OF MOUTH	Word of mouth is a positive way to publicise something in Kukerin and providing media releases and posters to council and a number of key businesses, like the pub, would certainly help spread the word.

OTHER IMPORTANT CONTACTS

HOSPITAL/DOCTOR	The Kukerin Health Centre is open for Accident & Emergency Service from Monday to Friday 8.30am to 5.00pm. (There is no doctor in attendance.) In an emergency please phone 000 for assistance or contact the Dumbleyung Hospital on 08 9863 4022 or Lake Grace Hospital on 08 9865 1206 or Wagin District Hospital on 08 9861 3444.
PHARMACY	The Wagin Pharmacy is the closest and can be found at 52 Tudhoe St Wagin and can be contacted on 08 9861 1245.
HARDWARE	Makit Hardware in Wagin is located at 23 Tudhoe St Wagin and can be contacted on 08 9861 1087 or CCL Hardware is found at 8 Stubbs St Lake Grace and can be contacted on 08 9865 1104.
COUNCIL	The local Shire Office is located in Dumbleyung and can be contacted on: 08 9863 4012
POLICE, FIRE, AMBULANCE	For all emergency services contact: 000 The closest Police response is from Lake Grace and Lake Grace Police can also be contacted on: 08 9865 1007.
TAXI	N/A
NEWSAGENT	The closest newsagency is the Dumbleyung Newsagency/Post Office located at 50 Absolon St Dumbleyung and can be contacted on 08 9863 4035.
VISITOR CENTRE	There is no official visitor centre in Kukerin but tourism and visitor info can be found through the Kukerin Tourist, Townscape & Tidy Towns organisation on 9864 7899.
ACCOMODATION	There are few accommodation options available in Kukerin. We would recommend trying the Kukerin Hotel on 08 9864 6013 or alternatively you can view other options at: http://www.dumbleyung.wa.gov.au/services.htm#church0