



Prepared by Shannon Gobell
Consultant to Measure Up! 2008

PINJARRA CIVIC CENTRE

1915 Pinjarra Rd, Pinjarra WA 6208
Queries and bookings to Lisa Gardiner
Ph: 08 9531 7777
Fax: 08 9531 1981
Email: lisag@murray.wa.gov.au

LOCAL GOVERNMENT

Shire of Murray
1915 Pinjarra Rd
Pinjarra WA 6208

PO Box 21
Pinjarra WA 6208

Ph: 08 9531 7777
Fax: 08 9531 1981
Email: ceo@murray.wa.gov.au

CITY/TOWN DESCRIPTION

Pinjarra is located approximately 86 km south of Perth on the banks of the Murray River in WA, and lies only a few kilometres from the substantial coastal centres of Mandurah and Rockingham. It is thought that the name Pinjarra is a corruption of the Aboriginal word 'beenjarrup' meaning 'place of the swamp'.

Pinjarra is the centre of the Peel Region and the largest town in the Shire of Murray. The shire has a population of approximately 12,121 people and its major industries are bauxite mining, agriculture, timber/forestry, mineral processing and tourism. The average summer max temperature is 33 degrees whilst the average winter temperature is around 15 degrees.

The region was one of the first settled in WA and features some fine examples of colonial architecture. The standout heritage buildings include the Old Schoolhouse in Henry Street - originally constructed in 1862 and rebuilt after floods in 1896 - and Liveringa, an 1880s homestead built by Edward McLarty. They are part of the 1.2km Pinjarra Heritage Trail.

The Heritage Rose Garden in Henry Street contains upward of 300 roses and one of them - a descendant of a plant dating back to 3000 BC - is the oldest known rose in cultivation. Pinjarra also boasts one of the best trotting tracks in the state and a fine racecourse.

EXTERIOR PHOTOS



Main Entry Doors to Venue



Gardens & Pathway leading to front of Venue



Side of Venue (Load in from Truck)



*Rear of Venue
(& plenty of truck/bus/company parking)*



*Load in access at side of venue
(through double doors and into auditorium)*



*Alternative load in access at rear of venue
(through double doors and straight onto stage)*

GENERAL DESCRIPTION

The venue is a small typical town hall style venue for its period. Built in 1963 it has been, and still is, used for many different things including everything from Senior Citizens workout classes to more theatrical use by the local drama society. As with many venues of this vintage there are a few building issues starting to creep in and a distinct lack of any real modern theatre technology or event equipment, namely lighting and sound gear.

The venue itself consists of a foyer, the main auditorium hall, kitchen and the senior citizens have a club type facility adjoined to the side of the premises (the other side of the kitchen area, hence sharing the kitchen space). The venue has obviously had a few additions to it since the original build of the main hall with a host of various storage facilities having been added onto the building, mostly around the stage area. The most notable addition of more recent times is the costume and prop storage facility at the rear of the venue for the local drama society. The kitchen is reasonably well appointed to cater for functions within the space. It should also be noted that the foyer is very small and not all that usable as a function space itself.

The venue is permitted to hold 308 patrons, as per the Form 4, Health Act 1911, Health (Public Buildings) Regulations 1992 mounted on the wall in the foyer. As there has been some storage spaces built off of the existing exit doors this total of patrons allowed may be in question though.

The venue has approximately 110 old brown plastic chairs, 20 old blue plastic chairs and 100 old orange plastic chairs, totalling 230 chairs. There are also 28 Sebel 6' laminated trestle tables of various colour, 16 older wooden 6' trestle tables, 24 square tables 600mm x 600mm in size (with 31 round table tops to go with them) and 3 square tables 750mm x 750mm in size. There is a chair trolley for moving chairs around too.

The venue has a wooden floor, wooden floor boarded stage. The floor in the auditorium was in ok condition although both could benefit from a sand and reseal. The venue is not air conditioned, but does have 8 ceiling fans and 5 gas heaters on the walls of the auditorium.

The acoustics in the venue are surprisingly quite good, with an acoustically treated ceiling and rear wall (top half) thus presenting only a very small reverb time in the space. The room would be good live theatre, amplified performances and other similar things without too many acoustic problems. As with many regional town hall venues this hall does not have a blackout, but the local drama society have placed cut out block out boards in most windows and the rest could be easily blacked out with some black cloth if needed.

The venue has both male and female toilets and whilst the venue hasn't been originally built with disability access in mind it has had a disabled toilet built onto the venue and an access ramp to the foyer from outside (although not to Australian Standards). The toilets are a little small and may struggle to cope with bigger crowds, particularly at an intermission in a show.

There is minimal lighting equipment in this venue and what is in place is mostly very old. The venue does have a modern dimmer system and lighting desk though. There is a basic audio system in place with basic mixing facilities.

Venue load in is via a paved lane to the side of the venue and then in through through one of the double exit doors into the auditorium main floor. It's a flat load in with only 1 step at the exit door. There is some entertainment power available in the form of 4 x 32amp 5pin 3phase outlets in prompt corner next to the dimmers and 1 x 32amp 5pin 3phase in opposite prompt corner. There are very few single phase GPO's around the stage area. There are also a few (not a lot) 10amp GPO's in the main auditorium area or around the venue in general.

TOURING TIPS

- Tour all your own technical equipment (especially lighting fixtures, unless it's a basic show). There is some minimal audio gear of a lower professional end suitable for small theatrical performances. If it's just a small vocal PA your after, where quality does not matter so much, the audio gear would probably be OK. The FOH lighting bar is a little far away from the front of stage and therefore very flat on to the stage. You could achieve a closer and steeper FOH lx bar position with girder clamps motors/chain blocks and tri truss or there is always the trusty winch up's of course.
- Tour all your own event/show staffing including any crew for load in/out.
- Bring your own blacks for window blackout purposes, if you require a blackout.
- There is limited accommodation in town, so book early to avoid disappointment.
- Design your lighting around a limited bar height design.
- For larger shows that require some wing space you may need to ensure the wing areas have been cleared of any old drama society sets before arrival to the venue.
- Check with the local council re all other smaller user groups of the venue to ensure that no one will overlap with your booking (i.e. specify complete hours of use and the time you need exclusivity of the venue).

As with many regional venues this is the type of venue where you collect the keys and are left to your own devices. The council would facilitate as much assistance as possible within the

INTERIOR PHOTO'S



Civic Centre - looking towards main entry end of hall (from stage)



Civic Centre - looking towards stage (from entry)



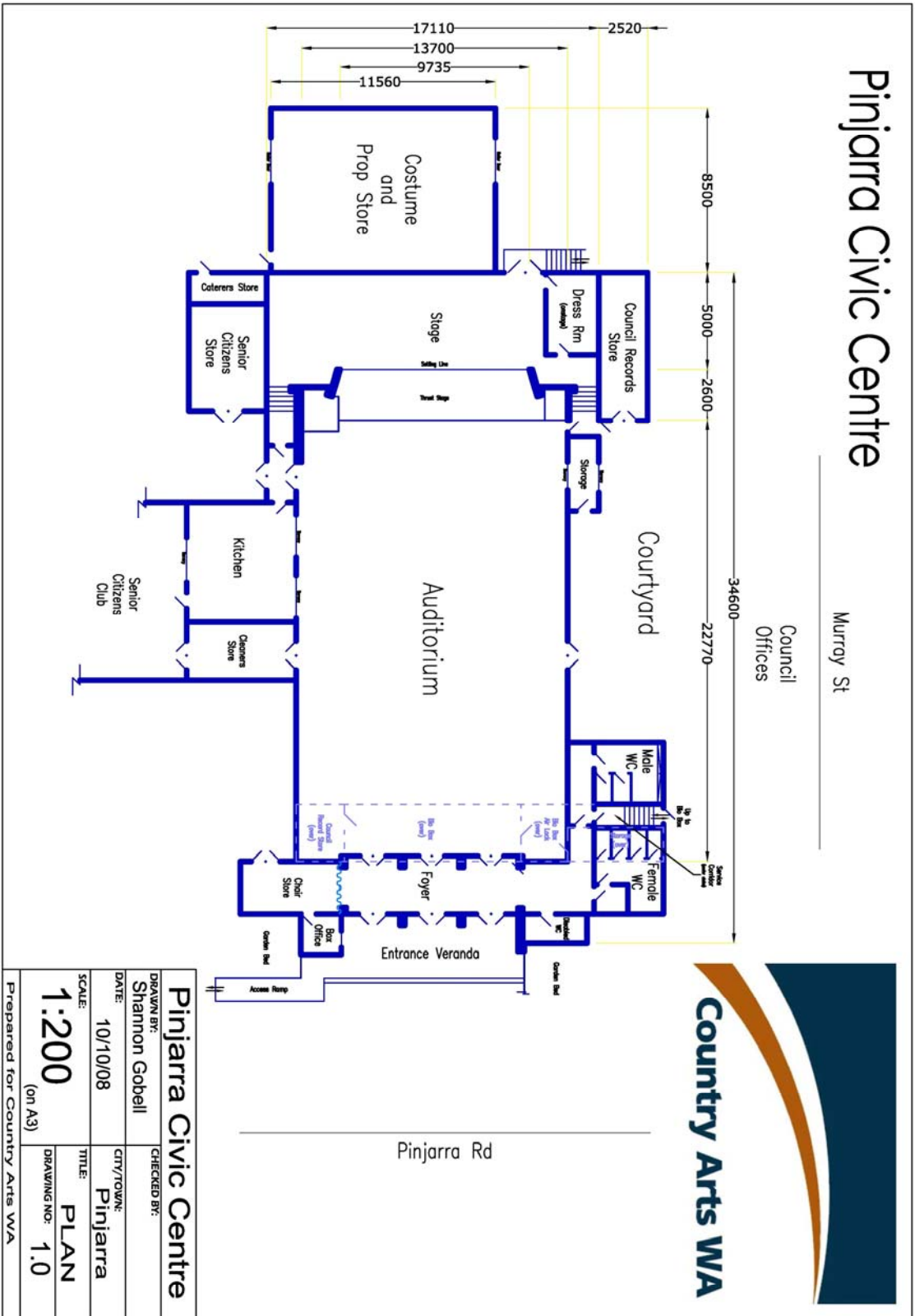
Stage in Pinjarra Civic Centre



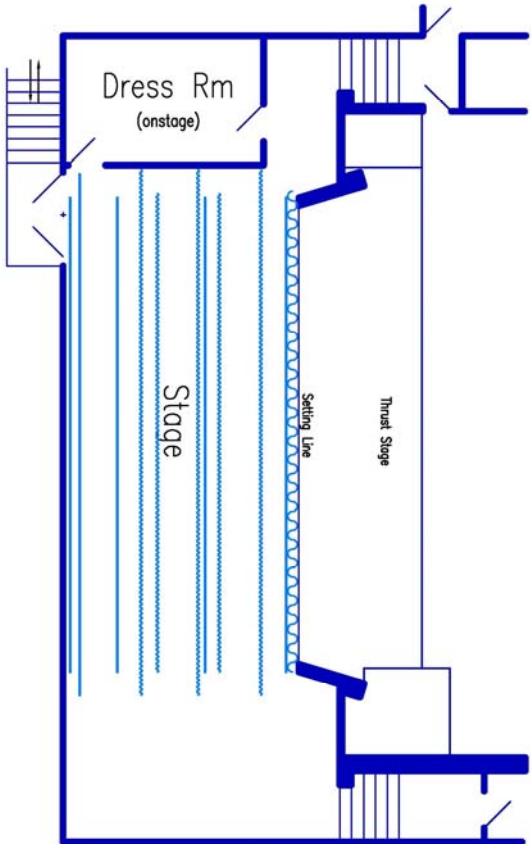
Pinjarra Civic Centre Foyer (main hall thru doors on left, to outside on right)

DIMENSIONS - All dimensions in mm

STAGE DEPTH (setting line to back wall)	5000
STAGE WIDTH (inc wings)	14464
STAGE HEIGHT	1100
PROMPT WING	1100
OPPOSITE PROMPT WING	4360
STAGE THRUST (setting line to front of thrust stage or apron)	2600
STAGE FLOOR TO CEILING Centre	5340
Outside	4485
STAGE FLOOR TO LX BARS (or available rigging points)	4200
PROSCENIUM WIDTH	9735
PROSCENIUM HEIGHT	2980
STAGE TO BORDER HEIGHT	2966
AUDITORIUM DEPTH	22770
AUDITORIUM WIDTH	13700
AUD FLOOR TO CEILING Centre	6175
Outsides	5000
(to bottom of ceiling fans)	4650
AUD FLOOR TO FOH LX BARS	4490



Pinjarra Civic Centre Stage Plan



+7300mm
FH 1 (18 Circuits)

+810mm Block Tabs 1

Setting Line
+1880mm House Curtain +286mm LX 1 (5 Circuits)

+810mm Block Tabs 1

+1680mm Border +1980mm LX 2 (5 Circuits)

+2140mm Block Tabs 2

+3000mm Border Block Tabs 3

+3350mm Block Tabs 3

+4850mm Open Bar +3950mm LX 3 - Op Bar (5 Circuits)

Pinjarra Civic Centre		Pinjarra Civic Centre	
DRAWN BY: Shannon Gobbell	CHECKED BY:	CITY/TOWN: Pinjarra	TITLE: STAGE PLAN
DATE: 10/10/08		DRAWING NO: 1.1	
SCALE: 1:100 (on A3)			
Prepared for Country Arts WA			

*Please Note: Whilst all bars are at fixed heights. No flying system is installed.
*Please Note: All measurements are in millimetres and are taken from the setting line.

FLYING FACILITIES & DRAPES

FLYING SYSTEM	No flying system installed
MASKING	No masking.
FOH CURTAIN	Yes, it is fairly new 80 pleat velour curtain and Royal Blue colour. The House Curtain is on a standard tab track and tabs open and shut well.
LEGS & BORDERS	2 x black cotton borders (750mm)
OTHER DRAPES or CURTAINS	3 x black cotton curtain sets on 3 tab tracks, tracked open and used as legs in this venue
CYCLORAMA	1 x white cotton cyclorama

LIGHTING FACILITIES

3 PHASE POWER AND LOCATION	Four (4) x 32Amp 5pin 3phase outlets are available above prompt corner onstage. One (1) x 32Amp 5pin 3phase outlet is available in opposite prompt corner.
OPERATING POSITION (S)	Bio Box, upstairs at rear of venue
LIGHTING DESK	Jands ESP II 48ch Lighting Desk
DIMMERS AND LOCATION	4 x Jands FP12 Dimmer Racks in mezzanine above prompt corner
WIRED LIGHTING BARS NUMBER OF CIRCUITS AND LOCATIONS	3 x Lighting Bars on stage, each with 5 circuits. 1 x FOH Lighting Bar, with 18 circuits. All lighting patch outlets have a round earth pin and house adaptor leads must be used to convert to normal 10amp earth pins on fixture plug tops.
PATCHING FACILITIES	There is a 48 way patch panel with only 33 wired circuits available on the mezzanine above prompt corner, next to the dimmers.
LAMP STOCK	4 x Selecon 500w 3way Cyc units 12 x Selecon 650w Fresnels, with barn doors 8 x Strand 743 Fresnels 2 x ETC Source Four 750w 25-50 degree zoom profiles 4 x Strand Patt23 mark II 2 x 650w Fresnels, with barn doors 1 x CCT 2000w Profile with iris and shutter on stand and monopak dimmer (used for followspot)
ALTERNATIVE ONSTAGE LIGHTING POSITIONS	None.
ALTERNATIVE FRONT LIGHTING POSITIONS	There are plenty of beams that you could rig trussing from for the purposes of hanging lighting in the ceiling above the main auditorium. You would need girder clamps, motors or chain blocks and trussing to be able to do this through. <i>**Please note this would not be very high though.</i> 2 x drop perchs lighting positions on FOH 1
TYPE OF CEILING/ POSSIBLE FIXING POINTS	Perforated aluminium acoustic slates in ceiling. There are several beams in the ceiling as mentioned above that trussing could be rigged from if required.
BLACKOUT	Is possible with some additional blacking out over windows with black material or similar
LADDERS	1 x 12' wooden ladder 1 x 9' steel ladder 1 x 12' aluminium ladder

LIGHTING FACILITIES continued

ONSTAGE 10/15AMP GPO OUTLETS	1 x 10amp double GPO in patch housing next to dimmers 1 x 10amp GPO in power distribution box in prompt corner 1 x 10amp GPO in opposite prompt corner
FOH 10/15AMP GPO OUTLETS	1 x 10amp GPO mid venue on either side of the auditorium 2 x double 10amp GPO under the front edge of the stage 1 x double 10amp GPO on bio box outer wall, op side of main auditorium
HOUSELIGHTS	Fluros, with standard light switches. The switches for the house lights are in both the foyer and onstage power distribution boxes.
WORKING LIGHTS	Fluros & 2 x 'porta' floods over stage
HAZER/SMOKE MACHINE	Jem ZR12 Hazer

SOUND FACILITIES

OPERATING POSITION (S)	The auditorium floor at the back of room on prompt side or stage left.
SOUND DESK	Eurodesk MX2442
AMPLIFIERS	None.
SPEAKERS	There are 4 speakers in total permanently mounted up high on the venue walls either side of the venue. Four (4) x self powered JBL Eon's (15") speakers.
FOLDBACK	There are 2 speakers for foldback, also permanently mounted up high on the venue walls either side of the venue, facing back at stage. Two (2) x self powered JBL Eon's (15") speakers.
AMPS	No foldback amps.
MICROPHONES	Six (6) Audio Technica choir hang mics
MIC STANDS	Three (3) x Straight mic stands
CD OR CASSETTE PLAYERS	None in venue.
SENDS	In house multicore between stage (under stage on prompt side) to rear of venue. 16 sends, 4 returns, all XLR.

COMMUNICATIONS

TALK-BACK	None
TELEPHONES	None in venue, but there are phone lines coming into the council building immediately next door.
INTERNET	None, but the town has Next G and hence Bigpond wireless modems will work.

ONSTAGE FACILITIES

CROSSOVER	There is no crossover.
WING SPACE	There is very limited amount of wing space available, especially on prompt side (due to the onstage dressing room).
TREADS TO FOH	There is one portable steel staircase for the venues stage, with 6 steps and handrails.
LADDER	No ladder on stage but plenty in the venue in general to use as per above.
ROSTRA	Two (2) timber rostras, 1520mm x 1520mm x 150mm high.
BLUE WORKLIGHT	Portable desk lamps with blue gel are in place over steps to backstage.

FRONT OF HOUSE FACILITIES (FOH)

SEATING	There are approx 230 plastic chairs in available for audience seating in the venue. These include: 110 x Brown Plastic Chairs 20 x Blue Plastic Chairs 100 x Orange Plastic Chairs These are all old and in average, but OK condition.
BOX OFFICE	There is a small space which can be used as a FOH Box Office in the venue, it has a ticket window to the outside of the venue under the front entrance veranda. The space is not fitted with anything specifically.
BAR	There is no dedicated bar for this venue.
KITCHEN	Yes, there is a reasonable size kitchen with a fridge, 1 x commercial oven with a 6 gas burner cook top unit, 1 domestic microwave, 1 x domestic dishwasher, rangehood, 1 x Birko 10L urn and plenty of bench space. The Kitchen is not soundproofed from the venue auditorium. There are two servery windows with roller shutters between the kitchen and auditorium.
TOILETS	Male, female and disabled toilets are available in the foyer.
AIR CONDITIONING	No, but there are 8 ceiling fans in the venue.
HEATING	Yes, five (5) gas heaters, located on auditorium walls

BACKSTAGE FACILITIES

GREEN ROOM	No
DRESSING ROOMS	There is one (1) dressing room 4300mm x 2700mm in size on stage, in the up stage prompt corner.
TOILETS	No
SHOWERS	No
MIRRORS	Yes
LAUNDRY	No
IRONING	No

BUMP-IN ACCESS

ACCESS DESCRIPTION	A suitable load in can be achieved through the set of double exit doors on the prompt side of the venue, as shown in the picture above. The load in is a flat load in from the car park straight in to the venue's auditorium floor level, with only one step at the exit door.
LOADING DOOR SIZE	Double doors at side of venue are 1380mm wide. An alternative load in can be achieved through a set of double doors to the rear of the stage from the car park, but this will up a small set of stairs.
EXTERIOR LIGHTING	Various fluros and floods are located on the exterior of the venue.
PARKING	Plenty of parking is available around the back of the venue in the car park and in the council car park at the front of the venue, 70 spaces + 2 disabled in total. There is also plenty of space to move trucks and buses around if required. Other on street parking is also available.
STORAGE	There is no real storage space for touring parties to hide away roadcases, however it is possible that they would be pushed into the senior citizens club if unused during the hire period.

EMERGENCY SYSTEMS

SMOKE ALARMS	No smoke alarms or fire alarm systems are fitted.
SPRINKLER SYSTEMS	None
FIRE EXTINGUISHERS	Yes, various extinguishers as per modern BCA requirements are fitted.
FIRE HOSES	None, but fire hydrants are located outside the venue.
EMERGENCY EXITS	There are five emergency exits for the venue, including the main entrance too.
EXIT SIGNS	Illuminated exit signs are fitted to three of the five emergency doors.
MEDICAL CONTACT	There is no nominated medical contact for the venue. Please see medical contacts below.

PRE-SALES

TICKETING SYSTEM	Tickets can be sold through Pinjarra Pharmacy, Music Force (in Mandurah) or at the Pinjarra Tourist Bureau. Council's Manager of Community Services will assist in identifying ticket sales outlets.
ADVERTISING POSITIONS	Poster Boards at venue. A banner could be hung outside the venue on the ramp handrail too.
POSTERS/BANNERS	As above.
LOCAL PUBLICATIONS	The Murray Mail, Mandurah Coastal Times and the local community paper, The Murray cover the Pinjarra township and surrounding areas.
LOCAL RADIO	There are few radio stations covering Pinjarra in both AM & FM bands, they include; Coast FM 6CST (97.3fm), 6MM (1116am) and 6TAB (1449am). For further information on radio stations in the area please refer to the following websites: http://www.ausradiostations.com/fmwa.html http://www.ausradiostations.com/amwa.html
WORD OF MOUTH	Word of mouth is a positive way to publicise something in Pinjarra and providing media releases to council and a number of key businesses (i.e. the pub) would certainly spread the word.

OTHER IMPORTANT CONTACTS

HOSPITAL/DOCTOR	Murray Hospital can be contacted at: 08 9531 7222 or the Murray District Hospital Peel Health Services can be contacted on 08 9531 1144
PHARMACY	The Pinjarra Pharmacy can be found in the new shopping centre complex on George St Pinjarra and can be contacted on 08 9531 1361
HARDWARE	Tuckey's Hardware is the local Mitre 10 store and is located at 19 George St Pinjarra and can be contacted on 08 9531 1473
COUNCIL	Local Shire Office: 08 9531 7777
POLICE, FIRE, AMBULANCE	For all emergency services contact: 000 Local police can also be contacted on: 08 9531 1666
TAXI	Pinjarra Taxi's: 08 9581 5815
NEWSAGENT	The Pinjarra Newsagency is located in the new shopping centre complex on George St Pinjarra and can be contacted on 08 9531 1259
VISITOR CENTRE	The Visitor Centre is located on the corner of George and Henry Streets in Pinjarra and the contact number is: 08 9531 1438
ACCOMODATION	There are a limited accommodation options in Pinjarra. I would suggest the Pinjarra Motel in particular given their size to facilitate a tour party; Pinjarra Motel: 08 9531 1811