

**CUE SHIRE HALL
DOWLEY STREET
SHIRE OF CUE
Tel 08 9963 1041
Fax 08 9963 1085**

Prepared by Alan Surgener
Consultant to **Measure Up! 2005**
Country Arts WA



GENERAL DESCRIPTION

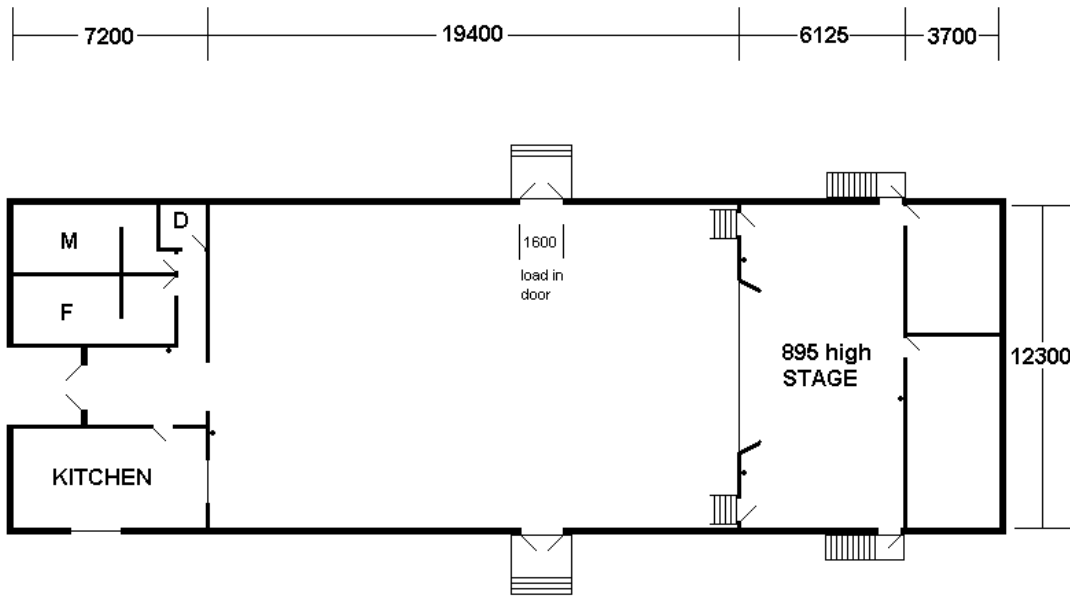
Built in 1991 and in good condition. A large rectangular auditorium with a flat ceiling and a 900-high raised stage. Estimated concert style capacity of 250, with an easy side load in access.



There is a 12300 wide and 8000 deep dance floor directly in front of the stage. *Note 4 x 4100 high ceiling fans above the dance floor just inside of the proscenium opening width.*

CUE SHIRE HALL - FLOORPLAN

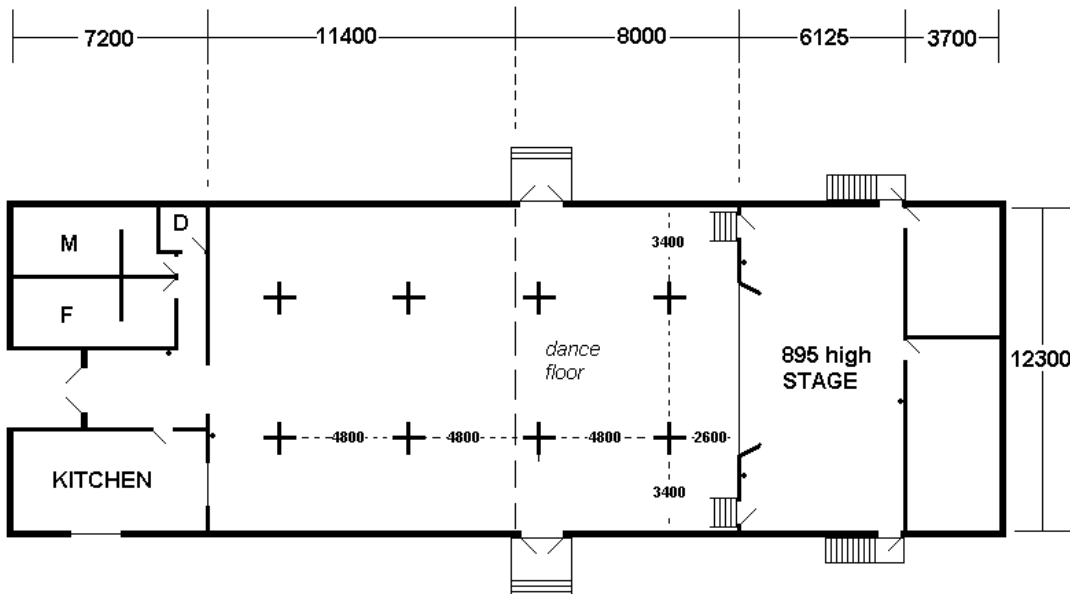
• = 10 amp power outlet



TOURING TIPS

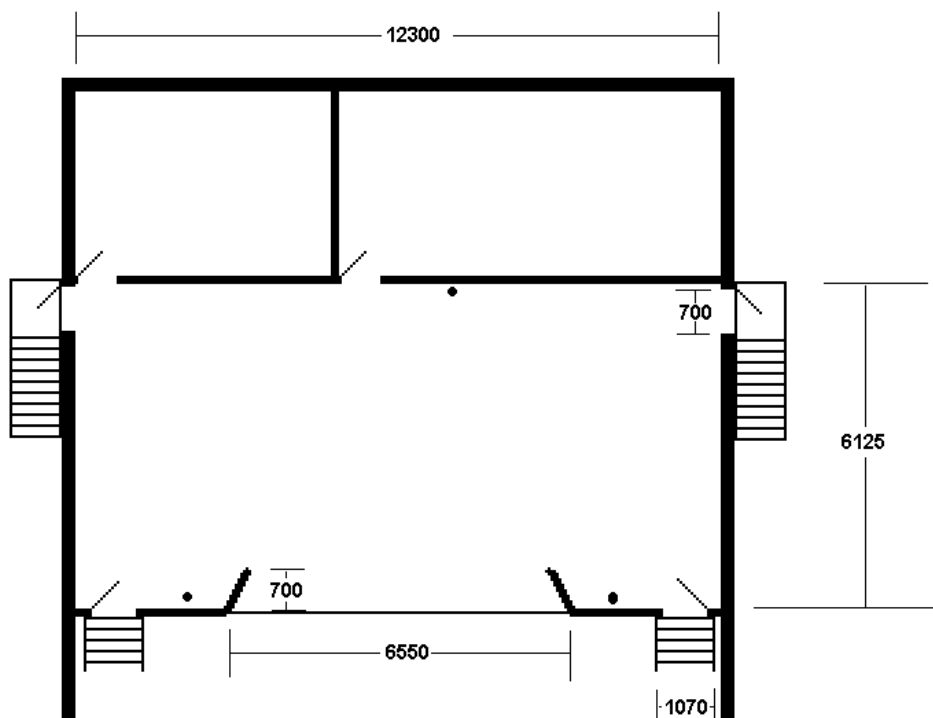
There is no 3-phase power and no lighting positions. There is no masking and the blackout is non-existent. The acoustics are problematic so allow plenty of time for sound checking. There is an 8000 deep dance floor directly in front of the stage, which makes for a very good alternative performance area. Note that there are ceiling fans 4100 above this floor, in line with the proscenium. The rear half of the auditorium is carpeted.

CUE SHIRE HALL - 4100 HIGH CEILING FANS



DIMENSIONS – All dimensions in mm

STAGE DEPTH	6125
STAGE WIDTH	12300
STAGE HEIGHT	895
STAGE THRUST	700
STAGE FLOOR TO CEILING	4500
STAGE FLOOR TO LX BARS	N/A
PROSCENIUM WIDTH	5980
PROSCENIUM HEIGHT	4010
AUDITORIUM DEPTH	19400
AUDITORIUM WIDTH	12300
AUD FLOOR TO CEILING	5350
AUD FLOOR TO LX BARS	N/A



FLYING FACILITIES

FLYING SYSTEM	N
MASKING	N
CYCLORAMA	N

LIGHTING FACILITIES

3 PHASE POWER AND LOCATION	N
OPERATING LOCATION (S)	N
LIGHTING DESK	N
DIMMERS AND LOCATION	N
WIRED LIGHTING BARS	N

NUMBER OF CIRCUITS AND LOCATIONS	
PATCHING FACILITIES	N
LAMP STOCK	N
ALTERNATIVE ONSTAGE LIGHTING POSITIONS	N
ALTERNATIVE FRONT LIGHTING POSITIONS	N
TYPE OF CEILING/ POSSIBLE FIXING POINTS	I hazard a guess at asbestos sheets, held in place by exposed 70 x 45 timber in 1200 squares. There is a lofted roof above this ceiling, which could eventually support a lighting grid...but it would be difficult to do temporarily.
BLACKOUT	No. There are 2 windows each side of stage with no curtains. There are eight windows each side of hall with blue curtains.
LADDERS	N
ONSTAGE 10AMP OUTLETS	3 SEE PLAN
FOH 10AMP OUTLETS	1 AT REAR
HOUSELIGHTS	FLOURESCENTS
WORKING LIGHTS	FLOURESCENTS OR 2 X 150W LAMPS

SOUND FACILITIES

OPERATING POSITION (S)	N
SOUND DESK	N
AMPLIFIERS	N
SPEAKERS	N
FOLDBACK	N
MICROPHONES	N
MIC STANDS	N
CD OR CASSETTE PLAYERS	N
SENDS	N

COMMUNICATIONS

TALK-BACK	N
TELEPHONES	N
INTERNET	N

ONSTAGE FACILITIES

CROSSOVER	N
WING SPACE	N
TREADS TO FOH	1065 WIDE; BOTH FIXED AT SIDES
LADDER	N
ROSTRA	N
BLUE WORKLIGHT	N

FRONT OF HOUSE FACILITIES (FOH) Relates to audience and front staff

SEATING	58 X PLASTIC CHAIRS
BOX OFFICE	N
BAR	SERVERY HATCH IN KITCHEN
KITCHEN	Y
TOILETS	Y
AIR CONDITIONING	N
HEATING	N

BACKSTAGE FACILITIES

GREEN ROOM	N
DRESSING ROOMS	2 ROOMS UPSTAGE, PRESENTLY FULL OF STORAGE
TOILETS	N
SHOWERS	N
MIRRORS	N
LAUNDRY	N
IRONING	N

BUMP-IN ACCESS

ACCESS DESCRIPTION	GOOD ACCESS VIA LARGE CAR PARK THROUGH SIDE AUDITORIUM DOORS
LOADING DOOR SIZE	1600W X 2000H
EXTERIOR LIGHTING	N
PARKING	PLENTY
STORAGE	N

EMERGENCY SYSTEMS

SMOKE ALARMS	N
SPRINKLER SYSTEMS	N
FIRE EXTINGUISHERS	N
FIRE HOSES	N
EMERGENCY EXITS	Y
EXIT SIGNS	Y
MEDICAL CONTACT	

PRE-SALES

TICKETING SYSTEM	
ADVERTISING POSITIONS	
POSTERS/BANNERS	
LOCAL PUBLICATIONS	
LOCAL RADIO	
WORD OF MOUTH	

FRIENDLY NEIGHBOURS

DOCTOR	
HARDWARE	
PUBLICAN	
NEWSAGENT	
PEOPLE TO INFORM	