



Darkan Shire Hall

Contact: Karlene Gross at Darkan Music & Drama Group

E hotgoss@westnet.com.au

Exterior photos



Front entrance



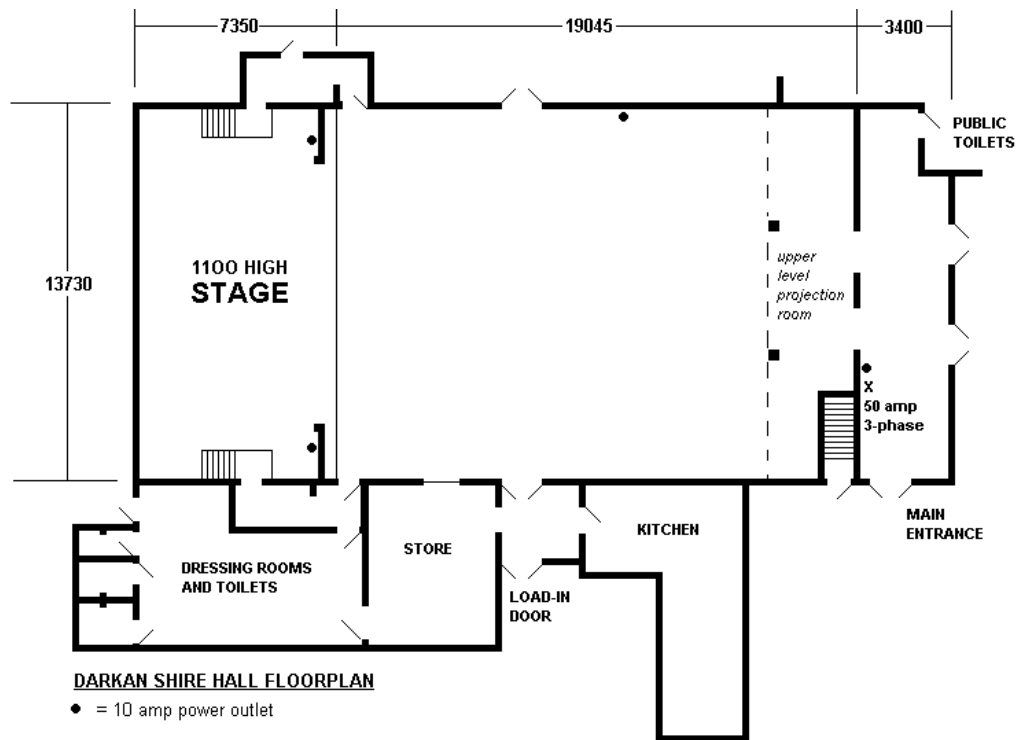
Side load-in door

General Description

Built in 1962. A gym hall with an 1100 high, proscenium arch stage and an estimated concert style audience of 250. The licensed capacity is 300.

There is a single 30-amp three-phase in the upstairs front control room alongside a well maintained 12-channel dimmer, manual desk and a 48 circuits patch panel.

There is a 50-amp 5-pin three-phase outlet more conveniently located in the foyer at the rear of the hall. There is an auditorium side load-in double door and an excellent modern dressing room and green room.



Touring Tips

The room is acoustically challenging, so allow plenty of time for sound checking.

Unless you can always perform downstage centre, play on the floor; as the low and narrow proscenium opening makes lighting difficult.

You need to give advance warning to the Shire to install the lighting bars above the Auditorium as they are removed when not in use. The dimmers and patching outlets are all located in the projection room: the only access to this room is via an outside door, then up steep and narrow stairs. Do not operate from here; it is hard to access and very difficult to hear.

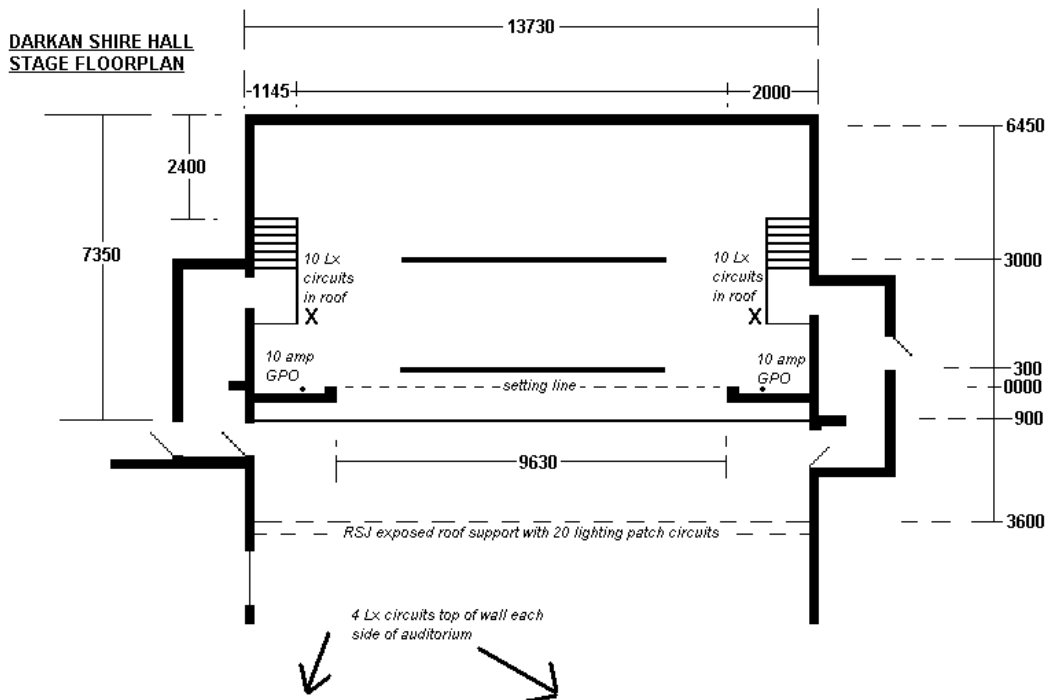
Both 3-phase supplies are at the opposite end from the stage; so use the internal patching circuits or bring a 40-metre extension.

Interior Photo



Dimensions

Stage depth	7350
Stage width	13730
Stage height	1100
Stage thrust	900
Stage floor to ceiling	3480 @ sides 4650 @ centre
Stage floor to lx bars	3450
Proscenium width	9630
Proscenium height	3280
Auditorium depth	19045
Auditorium width	13730
Aud floor to ceiling	4500 @ sides; 5670 @ centre
Aud floor to lx bars	N/a



Flying facilities

Flying system	No
Masking	Full black box – cotton
Cyclorama	No

Lighting facilities

3 phase power and location	One 30-amp three-phase outlet located in the projection room upstairs at rear of auditorium. Access to this room is only by outside door at the side of the building; and by very narrow, steep stairs. One 50-amp three-phase in entrance foyer.
Operating position (s)	Projection room upstairs or drop the dmx thru the window and control from the rear of the hall.
Lighting desk	Strand 12-channel 2 preset manual
Dimmers and location	Strand 12-channel dimmer pack
Wired lighting bars number of circuits and locations	48 wired circuits. 10 circuits in a box above each side of the stage. There are 20 circuits in the auditorium roof. There are 4 circuits in the top of the walls on each side of the auditorium. Forewarn the shire to install the auditorium lighting bars!!!
Patching facilities	All patching tails in projection room.
Lamp stock	4 x 1kw profile

	4 x 650 fresnel 1 x cct 1kw follow spot and stand
Onstage lighting positions	2 x 6500 bars. One ds one cs There are plenty of alternative rigging points.
Blackout	No. Ten auditorium windows.
Ladders	Massive fixed aluminium a' frame for front. Old wooden a' frame for onstage
Onstage 10amp outlets	One in each downstage corner
Aud 10amp outlets	One at the rear centre, one centre left. You can pull from the kitchen or unplug one of the 8 electric bar heaters and use them.
Houselights	Fluorescents.
Working lights	Yes onstage.

Sound facilities

Operating position (s)	Rear of auditorium
Sound desk	12 channel powered mixer
Amplifiers	N/a
Speakers	2
Foldback	
Microphones	2 x sm58
Mic stands	2 x boom
Cd or cassette players	
Sends	

Communications

Talk-back	
Telephones	
Internet	

Onstage facilities

Crossover	Behind upstage black curtain
Wing space	Minimal
Treads to foh	No. Access either side via standard door.
Ladder	Yes
Rostra	No
Blue worklight	No

FOH facilities

Seating	150 plastic chairs
Box office	Yes at main entrance
Bar	Byo or arrange license from shire
Kitchen	Yes
Toilets	Yes
Air conditioning	No
Heating	Yes. 8 x electric bar heaters

Backstage facilities

Green room	Yes; modern open-plan dressing room
Dressing rooms	Yes, new and well maintained on stage right
Toilets	Yes
Showers	Yes
Mirrors	Yes
Laundry	
Ironing	

Bump-in access

Access description	Reverse the truck and ramp down through two double-doors leading into the centre right side of the auditorium.
Loading door size	1550w x 2000h
Exterior lighting	Only at main front entrance.
Parking	Plenty
Storage	6000 x 4000 chair storage room

Emergency systems

Smoke alarms	No
Sprinkler systems	No
Fire extinguishers	Everywhere
Fire hoses	No
Emergency exits	Four in auditorium
Exit signs	Four not lit
Medical contact	

Pre-sales

Ticketing system	Shire
Advertising positions	
Posters/banners	
Local publications	
Local radio	
Word of mouth	

Friendly neighbours

Doctor	
Hardware	
Publican	
Newsagent	
People to inform	

