

**THEATRE '8' INC
EIGHTH STREET
WONTHELLA
GERALDTON**

Venue Tel: 08 9921 3902

Secretary: 08 9921 2347

Prepared by Alan Surgener
Consultant to **Measure Up! 2005**
Country Arts WA



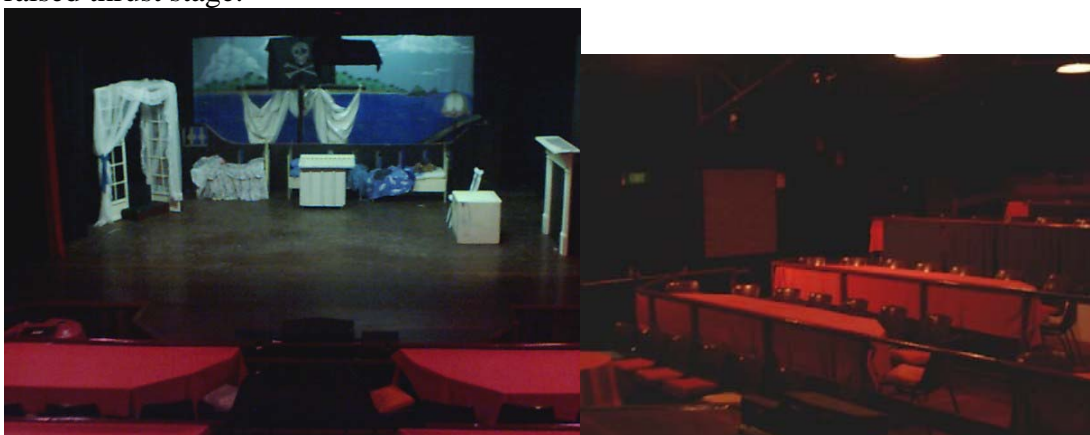
GENERAL DESCRIPTION

Do not be discouraged by these photos... this performance space is a little gem.

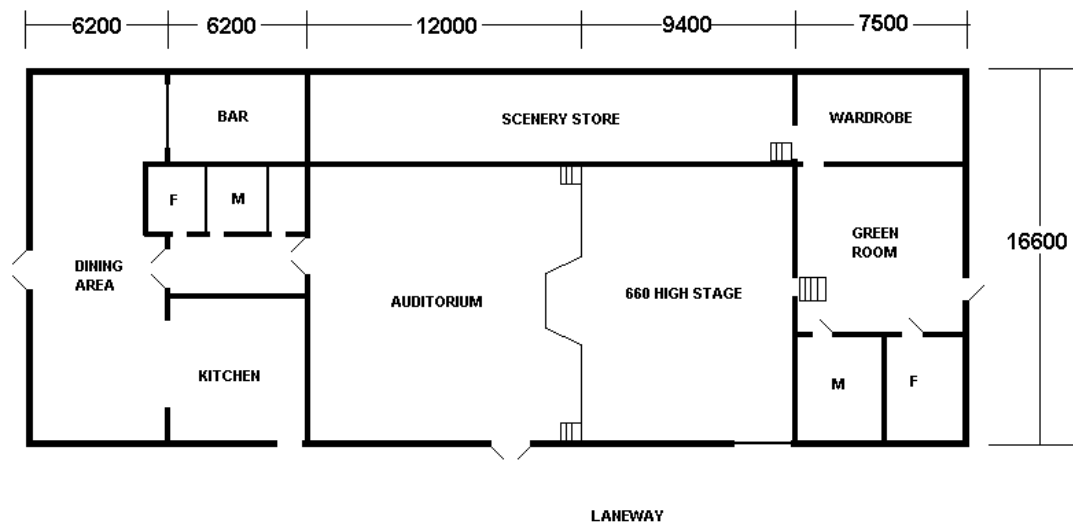
Its large stage was originally purpose built as a rehearsal room for professional productions intended for the Geraldton Town Hall.

Theatre 8 has a very welcoming feeling and a great reputation, nurtured over the past 25 years under the caring and co-operatively managed guidance of experienced enthusiasts. This building is in a constant state of upgrading financed by contributions from its members: at the time of this report, May 2005, a front dining room was being completed. The next stage of development was for a more modern tiered seating block to accommodate an audience of 120. It was hoped that this would be ready for 2006.

At present, the traditionally masked stage provides an averaged 7400wide x 8000deep performing area. There is easy load-in, adequate wing-space and good acoustics, two 30 amp three-phase onstage, a front bio box, and a green room backstage with laundry facilities. The current auditorium is laid out in a 72-seat cabaret style, which compliments the engaging raised thrust stage.



THEATRE 8 VENUE FLOORPLAN



TOURING TIPS

There is generally a production in rehearsal, if you have to alter the lighting rig it will have to be returned. So add to what is there then remove it.

A common drawback to buildings of this period is its low ceiling height: lighting angles are flat.

The bio box, while in the best position, is very cramped and just manages to seat two.

Sound operators need to be aware that the control room is glassed in. If you wish to operate from within the auditorium advance warning would need to be given as audience space is at a premium.

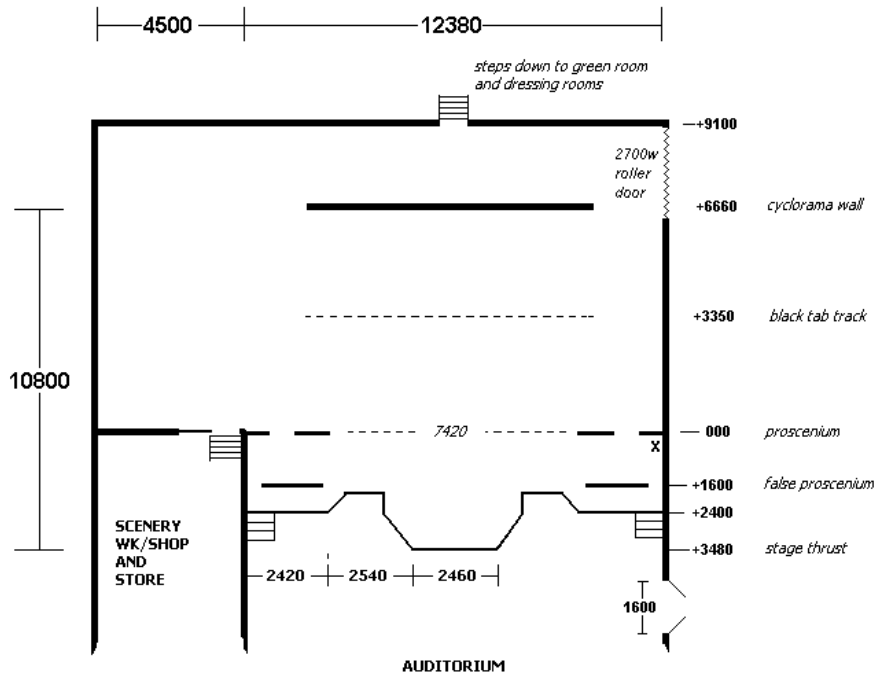
If you wish to use the cyclorama check that it is painted white as some productions use it a painted backdrop.

Due to its popularity, Theatre 8 is in constant use; those intending to hire the venue might have to give plenty of notice.

DIMENSIONS – All dimensions in mm

STAGE DEPTH	10800
STAGE WIDTH	12380
STAGE HEIGHT	660
STAGE THRUST	3480
STAGE FLOOR TO CEILING	4900
STAGE FLOOR TO LX BARS	3600
PROSCENIUM WIDTH	7420
PROSCENIUM HEIGHT	3300
AUDITORIUM DEPTH	12000
AUDITORIUM WIDTH	12380
AUD FLOOR TO CEILING	5200 at centre, 3600 at sides
AUD FLOOR TO LX BARS	4260 at centre (see elevation drawing)

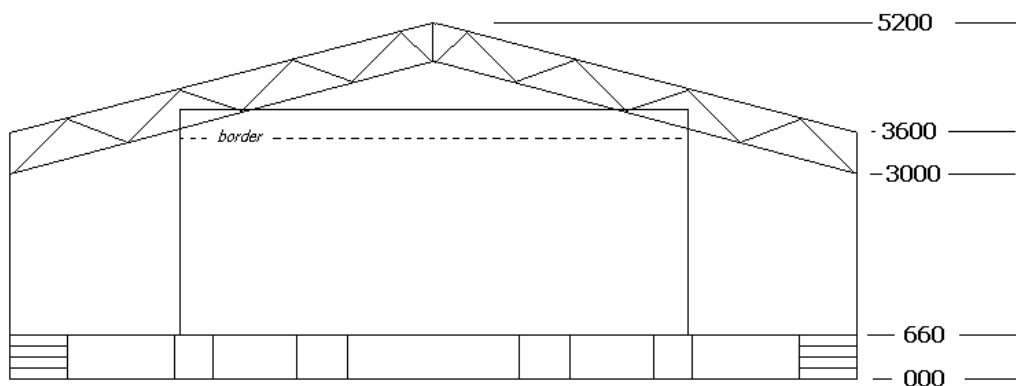
THEATRE 8 STAGE FLOORPLAN x = 2x 30amp three-phase



FLYING FACILITIES

FLYING SYSTEM	No. There are 3 tumble cloths
MASKING	False pros and pros with 4 soft black legs either side. Black tabs centre stage.
CYCLORAMA	Solid wall, normally painted white

FOH end elevation - shows FOH 600 deep roof truss
*onstage lx bars are parallel with the top of the pros



LIGHTING FACILITIES

3 PHASE POWER AND LOCATION	2 x 30amp outlets DSL
OPERATING LOCATION (S)	Sound and lighting bio box has been built above the seating at the rear centre of the auditorium

LIGHTING DESK	24 channel Jands SPII
DIMMERS AND LOCATION	1 x Dynalite 12 channel analogue 1 x Jands 12 channel analogue both DSL
WIRED LIGHTING BARS NUMBER OF CIRCUITS AND LOCATIONS	No.
PATCHING FACILITIES	No
LAMP STOCK	16 x p23 profiles 4 x selecon 24/40 650w profile 2 x Selecon 1kw fresnels 6 x four channel flood units 2 x 500w floods 1 x 1kw follow spot in bio box Strobe
ALTERNATIVE ONSTAGE LIGHTING POSITIONS	There are plenty of hanging positions backstage. All are in line with the proscenium. At present there are 4 borders, each with a double bank of flood battens upstage of them.
ALTERNATIVE FRONT LIGHTING POSITIONS	There are 3 exposed roof trussing FOH at 3000 spacings. The first is above the downstage edge of the thrust. (See elevation drawing)
TYPE OF CEILING/ POSSIBLE FIXING POINTS	
BLACKOUT	Yes
LADDERS	Yes
ONSTAGE 10AMP OUTLETS	One either side of the cyc wall One upstage centre
FOH 10AMP OUTLETS	4 x 15amp, one in each corner One SL on wall near stage, and one SR floor
HOUSELIGHTS	Yes, on dimmer
WORKING LIGHTS	Fluorescents

SOUND FACILITIES

OPERATING POSITION (S)	Glassed in bio box raised at rear auditorium. The stage is miked for monitor system
SOUND DESK	4 channel Avico Mix 100
AMPLIFIERS	Peavey XR 560 Thechnics SU-500
SPEAKERS	4 x Peavey 711A
FOLDBACK	
MICROPHONES	2 x Avico cordless handheld
MIC STANDS	
CD OR CASSETTE PLAYERS	2 x CD players 2 x 5-disc CD players
SENDS	

COMMUNICATIONS

TALK-BACK	TV monitor in green room
TELEPHONES	
INTERNET	

ONSTAGE FACILITIES

CROSSOVER	Yes, behind cyc wall
WING SPACE	Yes, more on SR
TREADS TO FOH	2 fixed narrow treads at either side
LADDER	Yes
ROSTRA	Assorted 1200 x 1200 blocks
BLUE WORKLIGHT	No

FRONT OF HOUSE FACILITIES (FOH) Relates to audience and front staff

SEATING	72 fixed cabaret style *due to be upgraded to 120
BOX OFFICE	Yes
BAR	Yes
KITCHEN	Yes
TOILETS	Yes
AIR CONDITIONING	Yes
HEATING	Yes

BACKSTAGE FACILITIES

GREEN ROOM	Yes
DRESSING ROOMS	Yes
TOILETS	Yes
SHOWERS	No
MIRRORS	Yes
LAUNDRY	Yes
IRONING	Yes

BUMP-IN ACCESS

ACCESS DESCRIPTION	Very good. 2700 wide roller door directly onto stage USL or 1600 wide side door into auditorium. *These doors are off a side double road width laneway. A 3-tonne could just reverse, nothing larger.
LOADING DOOR SIZE	2700w x 2100h
EXTERIOR LIGHTING	No
PARKING	Huge car park at rear of theatre
STORAGE	Plenty of wing space SR

EMERGENCY SYSTEMS

SMOKE ALARMS	N
SPRINKLER SYSTEMS	N
FIRE EXTINGUISHERS	Y
FIRE HOSES	Y
EMERGENCY EXITS	Y
EXIT SIGNS	Y
MEDICAL CONTACT	

PRE-SALES

TICKETING SYSTEM	
------------------	--

ADVERTISING POSITIONS	
POSTERS/BANNERS	
LOCAL PUBLICATIONS	
LOCAL RADIO	
WORD OF MOUTH	

FRIENDLY NEIGHBOURS

DOCTOR	
HARDWARE	
PUBLICAN	
NEWSAGENT	
PEOPLE TO INFORM	Theatre 8 are well known in the community