

MARGARET RIVER CULTURAL CENTRE

Wallcliffe Road, Margaret River

Prepared by Alan Surgener
Consultant to **Measure Up! 2006**
Country Arts WA

SHIRE OF AUGUSTA-MARGARET RIVER

Queries and bookings to the Margaret River Recreation & Aquatic Centre

Tel: 08 9757 2153

Fax: 08 9757 2966

Web: www.amrsc.wa.gov.au



Front entrance



Foyer and stairs to upper balcony



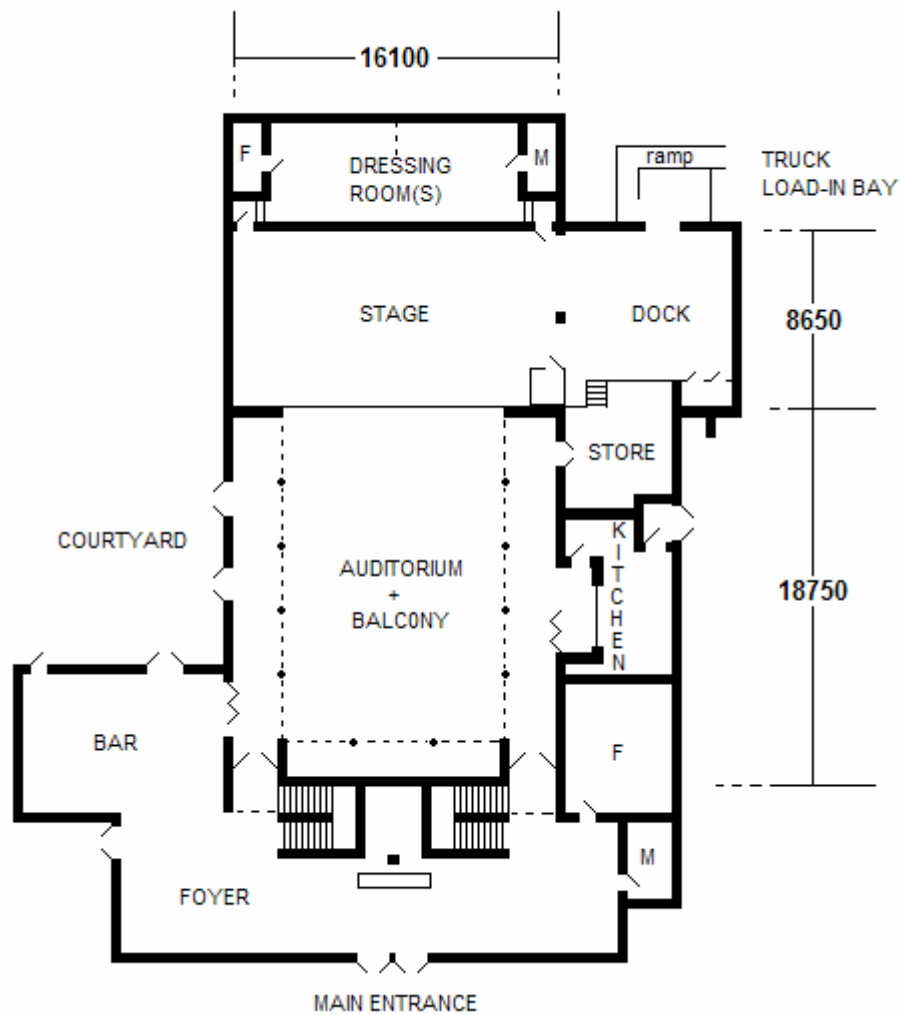
Rear truck height load-in bay

GENERAL DESCRIPTION

Built in the early 1980's, an attractive glass fronted foyer and FOH bar area makes this a very welcoming venue. Its roomy, gas-heated auditorium with an estimated concert-style seating capacity of 350 has an 820mm high stage with a full width proscenium which provides good sightlines.

All the basics are there: the venue has a truck-height load-in bay and scenery dock, a hand-line counterweight flying system with cyclorama and full black wool masking. There is 3-phase power, two front of house and three onstage wired lighting bars and a 24-dimmer lighting system. There is a more than adequate sound system, control room and a backstage dressing room with mirrors, toilets and showers.

GENERAL PLAN OF MARGARET RIVER CULTURAL CENTRE



TOURING TIPS

The Shire leases the venue through the Recreation and Aquatic Centre to other groups such as aerobics classes, so advance bookings are essential to ensure uninterrupted usage. The Recreation and Aquatic Centre has limited ability to promote your event or sell tickets. They cannot provide event staff.

The Cultural Centre has no resident technician, which means that you pick up the keys from the adjoining Aquatic Centre and are left to your own devices. While it is relatively well equipped in regard to other venues in the State, it is quirky, and the fine-tuning involved in sorting out the masking, lighting and sound systems will take you an extra day to figure out.

If you wish to run a well attended event then work in conjunction with Arts Margaret River. While not directly linked to the venue, Arts Margaret River is the group with the most experience of presenting there. They have their fingers on the pulse of the local market, and can assist in the advice of promotion, accessing staff and crew, and the hiring of supplementary equipment. Contact Arts Margaret River on 08 9758 7316 or email info@artsmargaretriver.com

Starting points of concern, in 2006:

- There is a devil of an earth-hum through the PA when using the lighting dimmers.
- There aren't enough lights, and some of the LX circuits don't work.
- Access to the FOH lighting bars involves a climb through the control room (centre of the upper balcony), and up a ladder into the roof. Use a rope once there and hoist all your lights from the auditorium floor.
- The main key opens most things, but you will need a separate key for the projection room, and another to access the fly-tower.
- The 6 masking legs are not on a fly-line. They are simply tied to the grid by long ropes.
- There is a strange white thing hanging above the centre auditorium that buzzes sporadically for no apparent reason. Local legend has it that it is some form of fire-alarm connected to the Aquatic Centre.



Ballet bar hard up against back brick wall

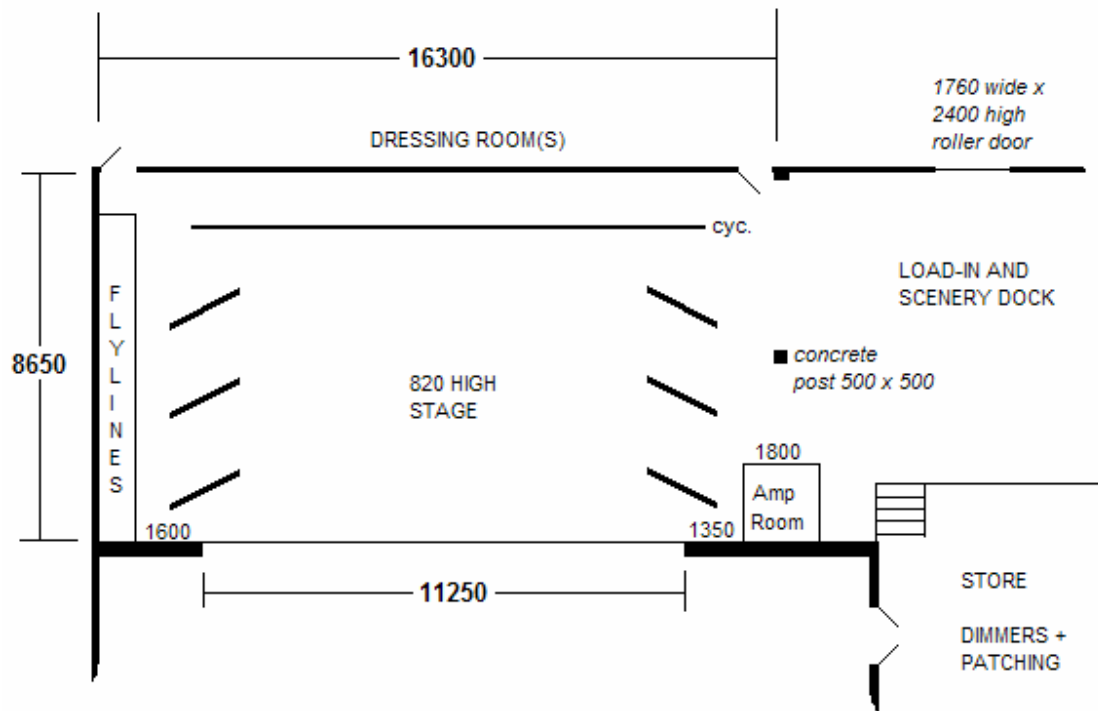


Auditorium and upper balcony as seen from the stage; note FOH lighting positions recessed into ceiling are split. The projection room is centre of upper balcony.

DIMENSIONS – All dimensions in mm

STAGE DEPTH	8650
STAGE WIDTH	16300 including wings
STAGE HEIGHT	820
STAGE THRUST	0
STAGE FLOOR TO GRID	Estimate 11000
STAGE FLOOR TO LX BARS	Bars normal dead is 5500
PROSCENIUM WIDTH	11250
PROSCENIUM HEIGHT	5040
AUDITORIUM DEPTH	18750
AUDITORIUM WIDTH	Full width 16100 Inside balcony width 11250
AUD FLOOR TO CEILING	6310
AUD FLOOR TO LX BARS	6500. The bars are recessed in ceiling slots Side booms are 4200 above floor

STAGE FLOORPLAN



FLYING FACILITIES *see photo and plan

FLYING SYSTEM	10 lines in use. Rope counterweight system
MASKING	3 black wool legs either side *these are not on a fly-line. They are tied off by long ropes directly to the grid.
CYCLORAMA	Y

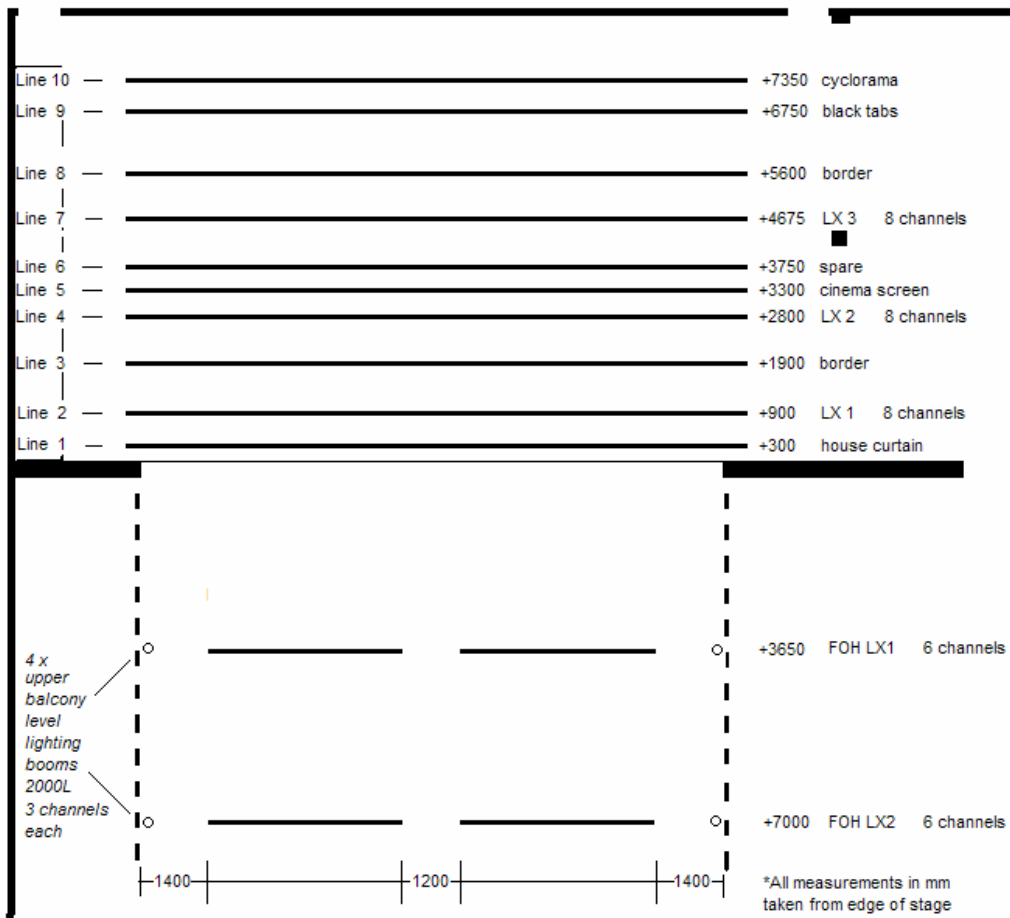


Counterweight system on stage right

LIGHTING FACILITIES

3 PHASE POWER AND LOCATION	2 x 30 amp outlets in store off DSL 1 x 30 amp outside; near foyer/bar door
OPERATING LOCATION (S)	Projection room not recommended: set up in auditorium or up on the rear balcony
LIGHTING DESK	Y. 24-channel <i>Theatrelight??</i>
DIMMERS AND LOCATION	2 x 12-channel Dynalite Pro-Pack
WIRED LIGHTING BARS NUMBER OF CIRCUITS AND LOCATIONS	*see plan 3 x onstage bars with 8 channels each 2 x front of house bars with 6 channels each 4 x 2000 long upright booms with 3 channels each
PATCHING FACILITIES	At dimmers off DSL
LAMP STOCK	Enquire at Aquatic Centre for updated list.
ALTERNATIVE ONSTAGE LIGHTING POSITIONS	N/A
ALTERNATIVE FRONT LIGHTING POSITIONS	N/A
TYPE OF CEILING/ POSSIBLE FIXING POINTS	N/A
BLACKOUT	Y. Full black curtains on all auditorium windows.
LADDERS	Large A' frame for onstage focus
ONSTAGE 10AMP OUTLETS	3 x 10 amp outlets in floor dips each side of stage
FOH 10AMP OUTLETS	Five downstairs: 1x 10 amp outlet in each corner and 1 x outlet in centre rear wall. Upstairs: 3 x 10 amp outlets
HOUSELIGHTS	Fluorescents controlled from foyer reception or dimmer spots controlled from projection room
WORKING LIGHTS	Y

FLY LINES AND LX POSITIONS *All measurements in mm taken from downstage edge of stage



SOUND FACILITIES

OPERATING POSITION (S)	Projection room not recommended: set up in auditorium or up on the rear balcony
SOUND DESK	Enquire at Aquatic Centre for equipment list
AMPLIFIERS	Y
SPEAKERS	Y
FOLDBACK	Y
MICROPHONES	
MIC STANDS	
CD OR CASSETTE PLAYERS	CD Player
SENDS	

COMMUNICATIONS

TALK-BACK	N
TELEPHONES	N
INTERNET	N

ONSTAGE FACILITIES

CROSSOVER	Yes. Behind cyclorama or thru dressing room.
WING SPACE	Very little
TREADS TO FOH	Yes. One 1000 wide four-stepper. See photo
LADDER	Large A' frame
ROSTRA	N
BLUE WORKLIGHT	Y

FRONT OF HOUSE FACILITIES (FOH) Relates to audience and front staff

SEATING	Plastic chairs
BOX OFFICE	Y
BAR	Y
KITCHEN	Y
TOILETS	Y
AIR CONDITIONING	N
HEATING	Y

BACKSTAGE FACILITIES

GREEN ROOM	N
DRESSING ROOMS	Y. Long, with central dividing curtain if required.
TOILETS	Y. One at each end of dressing room
SHOWERS	Yes. As above
MIRRORS	Y
LAUNDRY	N
IRONING	N

BUMP-IN ACCESS

ACCESS DESCRIPTION	Good truck height loading bay at rear of stage.
LOADING DOOR SIZE	1700 wide X 2400 high roller door
EXTERIOR LIGHTING	N
PARKING	Excellent
STORAGE	In dock

EMERGENCY SYSTEMS

SMOKE ALARMS	Y
SPRINKLER SYSTEMS	N
FIRE EXTINGUISHERS	Y
FIRE HOSES	Y
EMERGENCY EXITS	Y
EXIT SIGNS	N
MEDICAL CONTACT	

PRE-SALES

TICKETING SYSTEM	Recommend contacting Arts Margaret River
ADVERTISING POSITIONS	
POSTERS/BANNERS	
LOCAL PUBLICATIONS	
LOCAL RADIO	
WORD OF MOUTH	