



Prepared by Shannon Gobell  
Consultant to Measure Up! 2007

#### **MEEKATHARRA SHIRE HALL**

Cnr of Main St & Savage St, Meekatharra WA 6642  
Queries and bookings to Megan Alchin  
Ph: 08 9981 1002  
Fax: 08 9981 1505  
Email: [megan.alchin@meekashire.wa.gov.au](mailto:megan.alchin@meekashire.wa.gov.au)

#### **LOCAL GOVERNMENT**

Shire of Meekatharra  
54 Main St  
Meekatharra WA 6642

PO Box 129  
Meekatharra WA 6642

Ph: 08 9981 1002  
Fax: 08 9981 1505  
Email: [ceo@meekashire.wa.gov.au](mailto:ceo@meekashire.wa.gov.au)

#### **CITY/TOWN DESCRIPTION**

Situated on the Great Northern Highway, Meekatharra is the largest centre in the Murchison, easily accessible with excellent sealed roads from Perth in the south, Geraldton in the west and further north into the Pilbara. Located 764 km north east of Perth, 541 km east of Geraldton and 521 m above sea level, Meekatharra is a gold town which has developed into a major supply centre for the pastoral and mining interests in the East Murchison. With a population of about 2 000, it is a centre of a vast shire which covers 99 974 sq km of semi-desert where mining, sheep and cattle (there are only 48 properties in the shire) are the major activities.

Today's Meekatharra provides a geographically convenient centre for the numerous pastoral stations, established mines and mineral exploration companies in the area, meeting all their needs for stores, fuel, postal and banking services.

If you haven't been to Meekatharra for a while, you are sure to notice the changes. The town has had a major facelift with the opening of the Meeka Rangelands Discovery Trail. Taking advantage of the town's historical, tourism and cultural assets, the Discovery Trail has provided a new recreation facility for locals and a new attraction for visitors. A new gymnasium and half court basketball facility have also added to the town's recreational assets in recent times and there's a new "can do" attitude in town.

EXTERIOR PHOTOS



*3D View of front of venue*



*Main Entry Doors to Venue  
(behind security grills)*



*Side of Venue (Load in Truck Access)*



*Rear of Venue  
(& plenty of truck/bus/company parking)*



*Outdoor bar & function space*



*Load in access at side of venue  
(through double doors)*

## GENERAL DESCRIPTION

This venue is a neat little town hall and is very well looked after and kept neatly presented. As with most venues of this age there are a myriad of small things that could be improved or fixed to make the venue more attractive, but in this instance given the types of uses this venue encounters all in all I would say its in pretty good shape. Although I couldn't find a wall plaque I would suspect this venue was built in the 70's. My hat goes off to the local gardener/caretaker for the venue as he obviously has a passion for the venue and pride in his town, it certainly shows in his well manicured and "bowling green" lawns and gardens around the venue.

The venue itself consists of the main hall, kitchen, an annexe or supper room area off the side of the main hall and outdoor function & bar area. It has obviously had a few additions to it since the original build of the main hall with the supper room area to the venues right and the outdoor function & bar area to the left both looking more modern and of more recent time. The kitchen is well fitted out to cater for larger dinner events.

The venue looks as though it would cater for around 400 to 500 people but as with many WA regional venues I suspect there may have been a certificate issued to the council under the health act or BCA for much less than this based on either exit width or toilet numbers. There have been additional toilets added to the venue since original build and there does seem to be plenty of exit width from the venue in total and hence it may well cater for maximum capacity quite legitimately.

The venue has approximately 300 beige Sebel plastic chairs in very good condition and approximately 25 Sebel 6' trestle tables of similar colour, also in great condition. There is also a fairly new Sebel chair trolley, a general purpose trolley and some other occasional furniture (smaller square tables, etc).

The venue is much like many other regional town halls of that era with a wooden floor, wooden floor boarded stage and reasonable height auditorium. The floor in the auditorium was in excellent condition and has been well looked after. The venue is air conditioned through the use of 6 evaporative air con units on the roof, but it is worth noting that when on high the air noise is reasonably high. With the A/C on low though it is quite comfortable in the venue on a hot day and the air noise is quite acceptable.

The acoustics in the venue are quite acceptable, with some sort of carpeted panelling on the ceiling to act as dampening and the venue would be good live theatre, amplified performances and other similar things. As with many regional town hall venues this hall does not have a blackout, but this could be achieved but a large ladder, a lot of black material and a fair bit of time would be needed.

The venue has both male and female toilets suitable in size to match the venue's capacity and whilst the venue hasn't been built with disability access in mind it would appear that these toilets will cater for disability access (although not to Australian Standards).

There is no lighting equipment in this venue and only very limited audio equipment (similar to a very small "DJ rig"), so when touring here be sure to bring all your own gear.

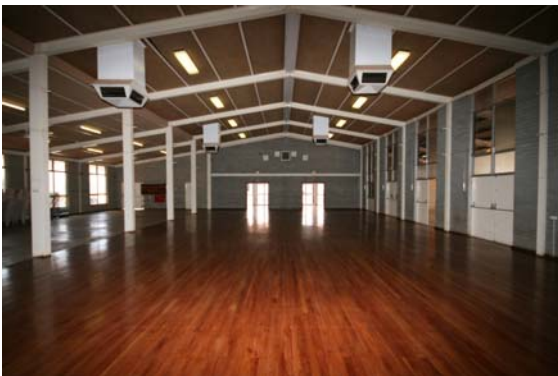
Venue load in is via a paved lane to the side of the venue and then in through the outdoor function space, through one of the many sets of double exit doors into the auditorium main floor. It's a flat load in with no stairs though. There is some entertainment power available in the form of 2 x 32amp 5pin 3phase outlets on stage. There are few single phase GPO's around the stage area though. There are also a few (not a lot) 10amp GPO's in the main auditorium area or around the venue in general.

## TOURING TIPS

- Tour all your own technical equipment (lighting, audio, etc). There is some minimal audio gear of a lower professional end though, although this is set up for small “DJ style” use primarily. If it’s just a small vocal (one mic) PA your after, where quality does not matter so much, the audio gear would probably be OK. There is NO lighting at all, not places to hang it. You could achieve hanging points with girder clamps motors/chain blocks and tri truss though if determined or there is always the trusty winch ups to tour of course.
- Tour all your own event/show staffing including any crew for load in/out.
- Bring your own large ladder.
- Bring your own black border curtains for blackout purposes, if you require a blackout.
- There is some quite good accommodation in town (Auski Inland Motel) although it can tend to book out quickly in peak seasons, so book early to avoid disappointment.
- The roof above the stage can become quite noisy when it rains, not that this will be a problem in a town that averages only between 200mm to 250mm of rainfall per year.

As with many regional venues this is the type of venue where you collect the keys and are left to your own devices. The council would facilitate as much assistance as possible within the council’s means though.

## INTERIOR PHOTO’S



*Meeka Shire Hall - looking towards main entry end of hall (from stage)*



*Meeka Shire Hall - looking towards stage (from entry)*



*Stage in Meeka Shire Hall*

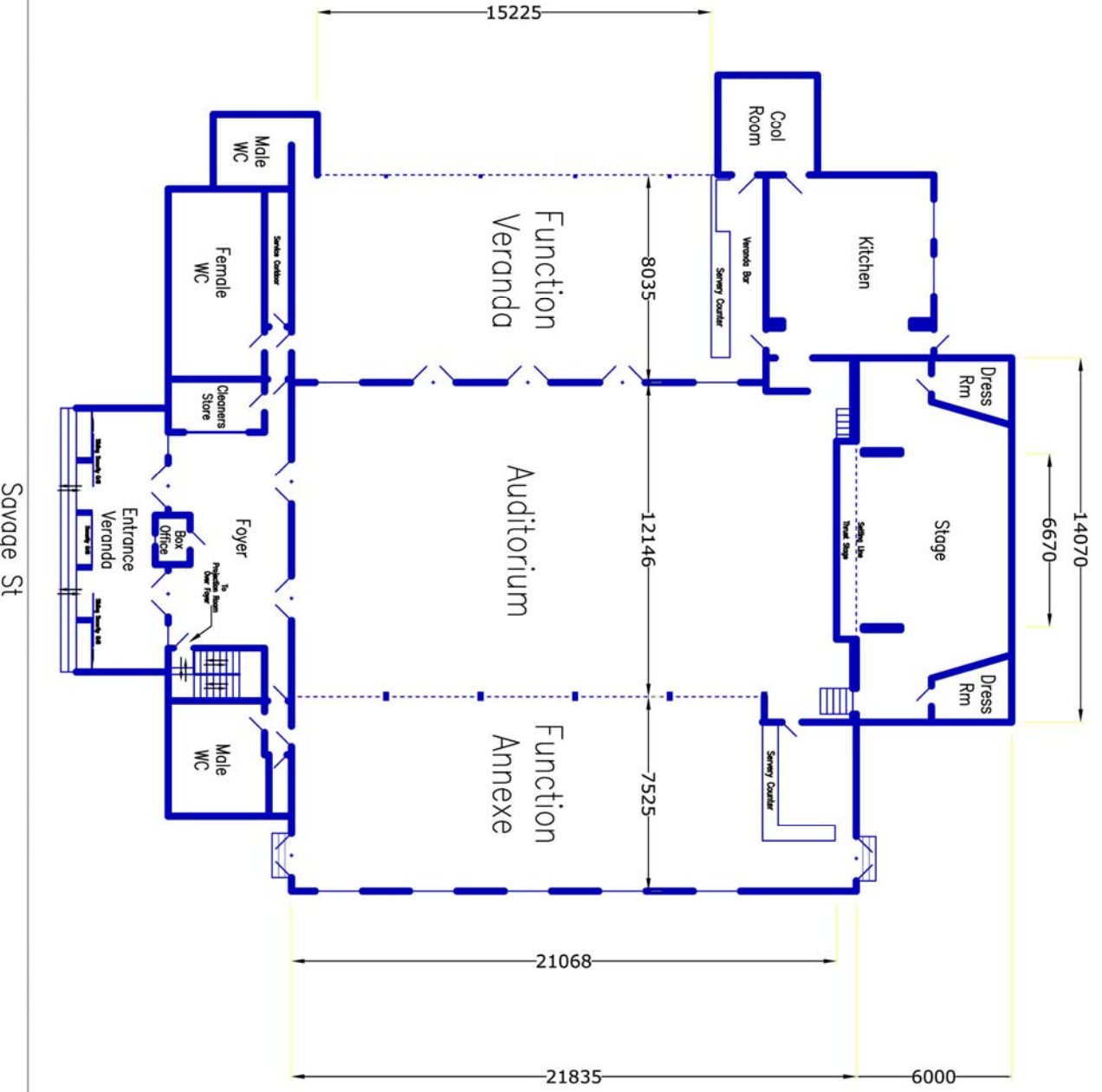


*Hall Annexe or Supper Room (main hall on left of columns)*

**DIMENSIONS - All dimensions in mm**

STAGE DEPTH (setting line to back wall)	6000
STAGE WIDTH (inc wings)	14070
STAGE HEIGHT	1090
PROMPT WING	3700
OPPOSITE PROMPT WING	3700
STAGE THRUST (setting line to front of thrust stage or apron)	767
STAGE FLOOR TO CEILING Centre	5082
Outsides	3896
(to RHS Beam - Centre)	4815
(to RHS Beam - Outsides)	3647
STAGE FLOOR TO LX BARS (or available rigging points)	N/A
PROSCENIUM WIDTH	6670
PROSCENIUM HEIGHT	3650
STAGE TO BORDER HEIGHT	2921
AUDITORIUM DEPTH	21068
AUDITORIUM WIDTH	12146
AUD FLOOR TO CEILING Centre	6128
Outsides	5111
(to RHS Beam - Centre)	5915
(to RHS Beam - Outsides)	4875
AUD FLOOR TO LX BARS	N/A

# Meekatharra Shire Hall



Savage St

Council Offices

Main St



Meekatharra Shire Hall		CITY/TOWN:	Meekatharra
DRAWN BY:	Shannon Gobell	CHECKED BY:	
DATE:	16/10/07	TITLE:	PLAN
SCALE:	1:200 (on A3)	DRAWING NO:	1.0
Prepared for Country Arts WA			

## FLYING FACILITIES & DRAPES

FLYING SYSTEM	No flying system installed
MASKING	No masking, No blackout available
FOH CURTAIN	Yes, it is fairly new and or a maroon colour. The House Curtain is on a standard tab track and tabs open and shut well.
LEGS & BORDERS	There is one (1) maroon border that sits in front of the pros arch.
OTHER DRAPES or CURTAINS	1 x white vinyl projection screen
CYCLORAMA	None

## LIGHTING FACILITIES

3 PHASE POWER AND LOCATION	Two(2) x 32Amp 5pin 3phase outlets are available in opposite prompt corner onstage.
OPERATING POSITION (S)	I would recommend on the auditorium floor at the back of the room or from side of stage.
LIGHTING DESK	None
DIMMERS AND LOCATION	None
WIRED LIGHTING BARS NUMBER OF CIRCUITS AND LOCATIONS	No Lighting bars or patch circuits are fitted in this venue.
PATCHING FACILITIES	There are no patching facilities.
LAMP STOCK	None
ALTERNATIVE ONSTAGE LIGHTING POSITIONS	There are plenty of beams that you could rig trussing from for the purposes of hanging lighting in the ceiling above the stage. You would need girder clamps, motors or chain blocks and trussing to be able to do this through. <i>**Please note this would not be very high though.</i>
ALTERNATIVE FRONT LIGHTING POSITIONS	Using girder clamps you could rig trussing from a traditional FOH position in the auditorium.
TYPE OF CEILING/ POSSIBLE FIXING POINTS	Some sort of carpeted tiled ceiling. There are several beams in the ceiling as mentioned above that trussing could be rigged from if required.
BLACKOUT	No, but could be achieved with a lot of blacks, a large ladder and a lot of patience
LADDERS	None in venue, bring with you.
ONSTAGE 10AMP OUTLETS	There is an assortment of 10amp & 15amp GPO's around the venue.
FOH 10AMP OUTLETS	As above.
HOUSELIGHTS	Fluros, with standard light switches. The switches for the house lights are in the foyer.
WORKING LIGHTS	Fluros.

## SOUND FACILITIES

OPERATING POSITION (S)	I would recommend the auditorium floor at the back of room.
SOUND DESK	A basic Peavey CD Mix 9072A "DJ" mixer and a Behringer Europower 10ch powered mixer are both available, but neither are suitable for quality work.
AMPLIFIERS	One (1) x Peavey PV-8.5C Amp
SPEAKERS	There are 4 speakers in total, with the 2 Peavey speakers being permanently mounted up high on the venue walls either side of the pros arch. Two (2) x Peavey Scorpion SP 5xt speakers Two (2) x Behringer Eurolive B1220 Speakers.
FOLDBACK	None
AMPS	No foldback amps.
MICROPHONES	One (1) Shure L4 Radio Mic system with SM58 handheld microphone.
MIC STANDS	None
CD OR CASSETTE PLAYERS	None in venue.
SENDS	N/A

## COMMUNICATIONS

TALK-BACK	None
TELEPHONES	None in venue, but there once was and hence Telstra feeds do still come into the building, there is just nothing currently connected. You could get a phone connected if you really needed to.
INTERNET	None, but the town has Next G and hence Bigpond wireless modems will work.

## ONSTAGE FACILITIES

CROSSOVER	There is no crossover.
WING SPACE	A limited amount of awkward shaped wing space is available. The dressing rooms are located in the wings and hence use up a lot of space on stage. Approx 3700mm is available each side of stage.
TREADS TO FOH	There are staircases, one each side of stage. One leading from the thrust stage down to the auditorium floor and the other from the Prompt side wing space down to the auditorium floor.
LADDER	None in venue, bring your own.
ROSTRA	None, although there is a portable aluminium scaffold system in the venue and its possible that you may be able to make some sort of a riser from this.
BLUE WORKLIGHT	None fitted

## FRONT OF HOUSE FACILITIES (FOH)

SEATING	There are approx 300 beige Sebel plastic moulded chairs available for audience seating in the venue. These are all in excellent condition.
BOX OFFICE	There is a small space which can be used as a FOH Box Office in the venue, although it is effectively a servery type window and hence the space is not fitted with anything specifically.
BAR	Yes, an outdoor bar space is available in this venue. An indoor bar could also be set up in the Function annexe or supper room area as there is an existing servery counter.
KITCHEN	Yes, there is a good size kitchen with a fridge, 1 x large commercial oven/cook top units, 2 x non-commercial deep fryers, microwave and plenty of bench space. The Kitchen is not soundproofed from the venue auditorium and currently the sliding door that separates it from the auditorium has been removed.
TOILETS	Male and female toilets are available
AIR CONDITIONING	Yes, There are 4 evaporative air conditioners fitted, these duct straight in through the roof of the venue with little sound proofing or ducting, hence are noisy when on high in particular. They are fine on low though and do work well.
HEATING	No

## BACKSTAGE FACILITIES

GREEN ROOM	No
DRESSING ROOMS	There are two (2) 3/4 person dressing rooms, fitted with lights, benches and mirrors. These are awkwardly located on stage in the wings.
TOILETS	No
SHOWERS	No
MIRRORS	Yes
LAUNDRY	No
IRONING	No

## BUMP-IN ACCESS

ACCESS DESCRIPTION	A suitable load in can be achieved through the set of double doors from the outdoor function side of the venue, as shown in the picture above. The load in is a flat load in from street level straight in to venue's auditorium floor level.
LOADING DOOR SIZE	Double doors at side of venue are 1760mm wide.
EXTERIOR LIGHTING	Various fluros and floods are located on the exterior of the venue.
PARKING	Plenty of parking is available around the back of the venue site, including plenty of space to move trucks and buses around.
STORAGE	There is no real storage space that is out of sight for touring parties to stash away roadcases, however it is likely that they would be pushed to a corner of the function annexe or supper room space.

## EMERGENCY SYSTEMS

SMOKE ALARMS	No smoke alarms or fire alarm systems are fitted.
SPRINKLER SYSTEMS	None
FIRE EXTINGUISHERS	Yes, various extinguishers as per modern BCA requirements are fitted.
FIRE HOSES	One (1) Fire Hose reel is fitted into the wall of the function annexe or supper room space.
EMERGENCY EXITS	There are seven emergency exits for the venue, including the main entrance too.
EXIT SIGNS	Exit signs are fitted to all emergency doors.
MEDICAL CONTACT	There is no nominated medical contact for the venue. Please see medical contacts below.

## PRE-SALES

TICKETING SYSTEM	Tickets sold through local shop outlets, the Council's Community Development Officer will assist in identifying ticket sales outlets.
ADVERTISING POSITIONS	None at venue, but a banner could be hung.
POSTERS/BANNERS	As above.
LOCAL PUBLICATIONS	The Midwest Times and the Pilbarra News covers the Meekatharra township and surrounding areas. The North West Telegraph and the Geraldton Guardian also covers out to Meekatharra.
LOCAL RADIO	There are few radio stations covering Meekatharra in both AM & FM bands, they include; Meeka FM 6MKA (98.3fm), Spirit Radio Network 6SAT (101.5fm), WAFM 6FMS (103.1fm), 6TAB (104.7fm), ABC Midwest & Wheatbelt 6ABCRR (106.3fm), Radio National 6ABCN (107.5fm) and various am stations. For further information on radio stations in the area please refer to the following websites: <a href="http://www.ausradiostations.com/fmwa.html">http://www.ausradiostations.com/fmwa.html</a> <a href="http://www.ausradiostations.com/amwa.html">http://www.ausradiostations.com/amwa.html</a>
WORD OF MOUTH	Word of mouth is a positive way to publicise something in Meekatharra and providing media releases to council and a number of key businesses (i.e. the pubs) would certainly spread the word.

## OTHER IMPORTANT CONTACTS

HOSPITAL/DOCTOR	Meekatharra Hospital can be contacted at: 08 9981 0600 or the Meekatharra Community Health Centre can be contacted on 9981 0636
PHARMACY	There is no chemist available in Meekatharra, but the Meekatharra Health Centre or Hospital may be able to help with any required medications.
HARDWARE	There is a small Thrifty Link hardware store in Meekatharra directly opposite the Shire Hall on Savage st.
COUNCIL	Local Shire Office: 08 9981 1002
POLICE, FIRE, AMBULANCE	For all emergency services contact: 000 Local police can also be contacted on: 08 9981 1007
TAXI	No taxi service available
NEWSAGENT	There is a combined newsagency & general store called "Farmer Jacks" on the corner of Main St & Savage St in Meekatharra.
VISITOR CENTRE	The Visitor Centre is located within the Shire Council offices and the contact number is: 08 9981 1002
ACCOMODATION	There are a number of accommodation options in Meekatharra. I would suggest the Auski Inland Motel in particular given their size to facilitate a tour party, their restaurant and their facilities; Auski Inland Motel: 08 9981 1433