

**MOORA PERFORMING ARTS CENTRE
PADBURY STREET
SHIRE OF MOORA**

Contact Ms Marita Harris, Manager

Phone: 08 9651 1401

Fax: 08 9651 1722

Prepared by Alan Surgener
Consultant to **Measure Up! 2005**
Country Arts WA



Main entrance



Load in door

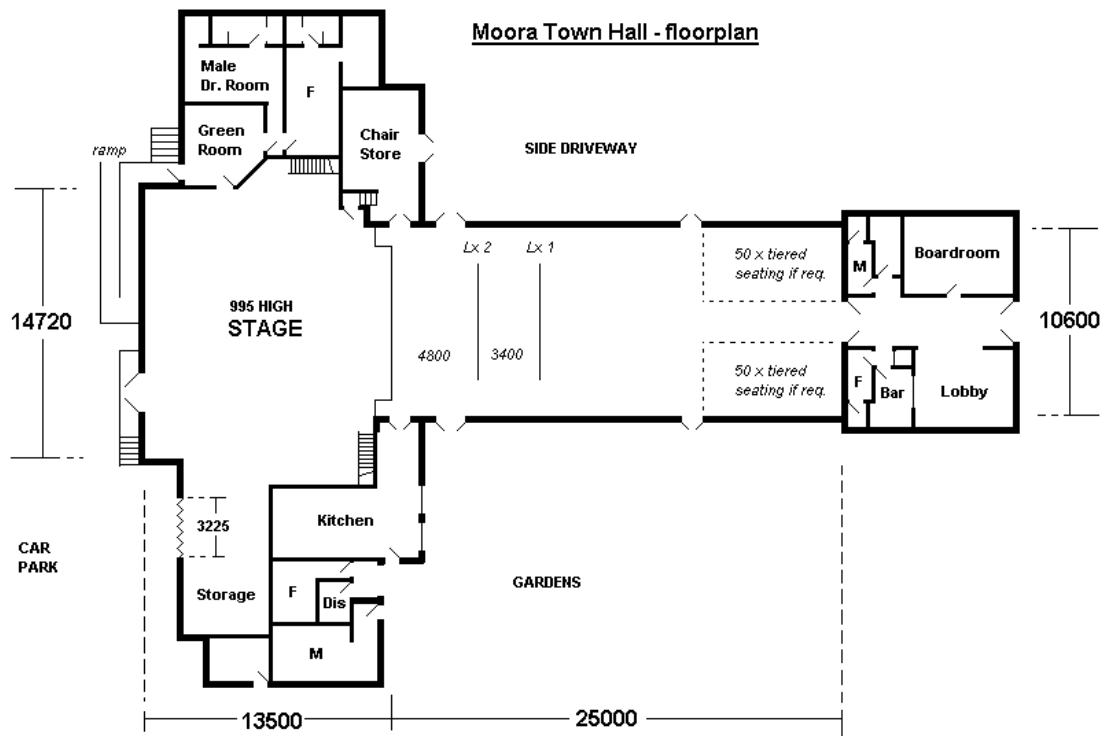
GENERAL DESCRIPTION

2004 saw extensive renovations to this heritage-listed building:

The additions included fully equipped dressing rooms and a green room; a huge 14720 wide x 13500 deep, metre-high raised stage with full wool black legs and border masking and a cyclorama. Sightlines are excellent, with ample wing space and easy rear load in access. Retractable-tiered seating allows for the option of an additional 100 seats, building audience capacity to in excess of 300.

There is a 5750 high fixed lighting grid with 84 circuits, a patch room with four 32 amp outlets and a further 32 amps in both downstage corners. DMX patch points allow for control onstage, in the auditorium or in the bio box.

A 20/8 sound loom links DSL to allow operating from either the centre of the auditorium or the bio box. Left, right and centre FOH speakers are high in front of the proscenium and in front of the thrust. A pair of fold back speakers is on the downstage lighting bar.



TOURING TIPS

The present #1 FOH lighting bar is too far from the stage making angles rather flat. At the time of this report, May 2005, it was hoped that a concert bar would be installed in line with the speakers, just downstage of the thrust. Make use of the FOH perches at the side of the stage. (See photo below). There is no FOH ladder. Access to these bars is by Genie, and this needs to be booked in advance.

There is no complete daylight blackout capacity, but the window blinds are ample for a daytime focus.

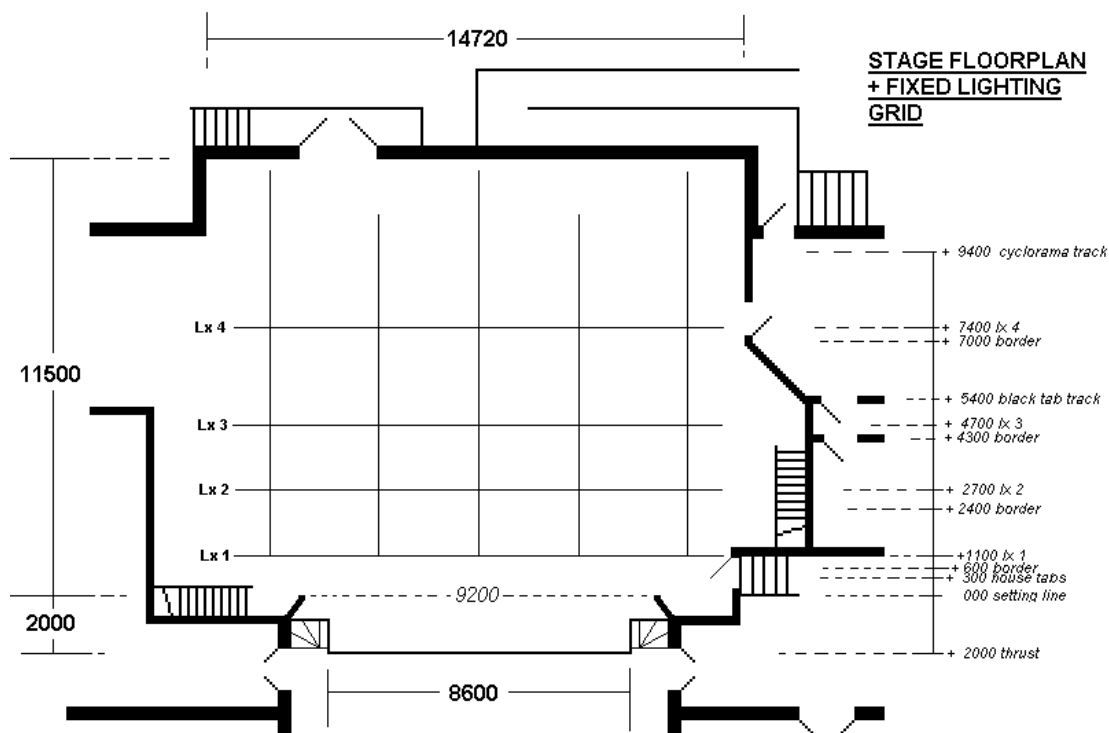
I judged the acoustics to be worthy of caution, but local advice says that an audience deadens the ring. The wiring is new and bound to have teething problems...check your lines early...watch for earth loop.



Shows FOH lighting bars and side perches, L + R and centre fill speakers.

DIMENSIONS – All dimensions in mm

STAGE DEPTH	11500
STAGE WIDTH	14720
STAGE HEIGHT	995
STAGE THRUST	2000
STAGE FLOOR TO CEILING	6100 * to air con-ducting
STAGE FLOOR TO LX BARS	5750
PROSCENIUM WIDTH	9200
PROSCENIUM HEIGHT	4100 at sides
AUDITORIUM DEPTH	25000
AUDITORIUM WIDTH	10600
AUD FLOOR TO CEILING	6750 at centre
AUD FLOOR TO LX BARS	6500 at centre



FLYING FACILITIES

FLYING SYSTEM	No
MASKING	House curtain directly upstage of proscenium 4 x black wool borders 3 x pairs full black wool legs Black French action tabs centre OR cyc. track
CYCLORAMA	Yes. On track if required

LIGHTING FACILITIES

3 PHASE POWER AND LOCATION	4 x 32 amp outlets in patch room 1 x 32 amp outlet DSR 1 x 32 amp outlet DSL
OPERATING LOCATION (S)	DMX runs to DSL; centre left of auditorium and to bio box in renovated projection room.
LIGHTING DESK	1 x 12/24 Theatrelight 2

DIMMERS AND LOCATION	1 x 12 channel dimmer
WIRED LIGHTING BARS NUMBER OF CIRCUITS AND LOCATIONS	Ash bar grid system Onstage Lx1 16 circuits Onstage Lx2 16 circuits Onstage Lx3 12 circuits Onstage Lx4 32 circuits FOH Lx1 8 circuits 6000 long FOH Lx2 8 circuits 6000 long Left perch 2 circuits 1200 long Right perch 2 circuits 1200 long *These perches are on the sidewalls directly downstage of the proscenium; above the doors.
PATCHING FACILITIES	84 circuits in patch room above DSR
LAMP STOCK	8 x par 64 medium 6 x 500w Selecon fresnel 6 x 1Kw Selecon fresnel 1 x 1Kw profile 8 x p23 profile (poor condition)
ALTERNATIVE ONSTAGE LIGHTING POSITIONS	5 x ash bars running up and down stage
ALTERNATIVE FRONT LIGHTING POSITIONS	No
TYPE OF CEILING/ POSSIBLE FIXING POINTS	Heritage
DAYTIME BLACKOUT	60% if blinds down
LADDERS	Massive fixed A frame on wheels for onstage Need advance warning for genie for FOH
ONSTAGE 10AMP OUTLETS	Double 10amp in each corner Separate supply DSL for amp
FOH 10AMP OUTLETS	One in each corner
HOUSELIGHTS	Yes
WORKING LIGHTS	Yes

SOUND FACILITIES

OPERATING POSITION (S)	Centre of auditorium in front of retractable tiered seating units: snake under floor hatch
SOUND DESK	ALLEN+HEATH GN2000 16in/4out
AMPLIFIERS	2 x Lab Gruppen ip1350
SPEAKERS	FOH L+R FOH CENTRE *ask Trevor
FOLDBACK	2 onstage lx grid as fold back
MICROPHONES	
MIC STANDS	
CD OR CASSETTE PLAYERS	
SENDS	20in/8out from DSL to bio box and 20in/8out from DSL to centre auditorium hatch

COMMUNICATIONS

TALK-BACK	Yes. Outlets DSR, DSL, CSL and bio box
TELEPHONES	
INTERNET	

ONSTAGE FACILITIES

CROSSOVER	Only behind cyclorama
WING SPACE	1800 on SL; 3000+ on SR
TREADS TO FOH	Fixed either side of thrust
LADDER	Large fixed A frame on wheels
ROSTRA	No
BLUE WORKLIGHT	No. Side and upstage but not blue.

FRONT OF HOUSE FACILITIES (FOH) Relates to audience and front staff

SEATING	2 x retractable 50-seat tiered blocks at entrance to auditorium. 200 x comfy interlock able chairs
BOX OFFICE	No. Servery hatch in lobby bar?
BAR	Yes
KITCHEN	Yes
TOILETS	Yes
AIR CONDITIONING	Yes
HEATING	Yes

BACKSTAGE FACILITIES

GREEN ROOM	Yes
DRESSING ROOMS	Yes
TOILETS	Yes
SHOWERS	Yes
MIRRORS	Yes
LAUNDRY	No
IRONING	Yes

BUMP-IN ACCESS

ACCESS DESCRIPTION	Excellent roller door into work area backstage; at truck height.
LOADING DOOR SIZE	3525w x 2000h
EXTERIOR LIGHTING	Yes
PARKING	Plenty backstage
STORAGE	Yes

EMERGENCY SYSTEMS

SMOKE ALARMS	Yes
SPRINKLER SYSTEMS	Yes
FIRE EXTINGUISHERS	Yes
FIRE HOSES	Yes
EMERGENCY EXITS	Yes
EXIT SIGNS	Yes. All lit.
MEDICAL CONTACT	

PRE-SALES

TICKETING SYSTEM	
ADVERTISING POSITIONS	
POSTERS/BANNERS	
LOCAL PUBLICATIONS	
LOCAL RADIO	
WORD OF MOUTH	

FRIENDLY NEIGHBOURS

DOCTOR	
HARDWARE	
PUBLICAN	
NEWSAGENT	
PEOPLE TO INFORM	