



Prepared by Shannon Gobell
Consultant to Measure Up! 2007

MOUNT MAGNET ANZAC MEMORIAL HALL

&

MOUNT MAGNET CINEMA

Cnr of Hepburn St & Naughton St, Mount Magnet WA 6638

Queries and bookings to Alice Kavanagh

Ph: 08 9963 4001

Fax: 08 9963 4133

Email: recreation@mtmagnet.wa.gov.au

LOCAL GOVERNMENT

Shire of Mount Magnet

Lot 163 Hepburn St

Mount Magnet WA 6638

PO Box 62

Mount Magnet WA 6638

Ph: 08 9963 4001

Fax: 08 9963 4133

Email: ceo@mtmagnet.wa.gov.au

CITY/TOWN DESCRIPTION

Mount Magnet is located 570 km north of Perth on the Great Northern Highway. Mount Magnet is a small township which now survives on a combination of gold mining and services for the surrounding pastoral area which boasts some of the largest sheep stations in Western Australia. The shire covers an area of 13,877sqm in the Mid West region of Western Australia, and has a population of approximately 1,180 people in the Shire. The town of Mount Magnet itself is the major residential area in the shire and has a population of approximately 727 people.

The town is well serviced by two supermarkets, two roadhouses, three hotels, cafe, butcher, nursing post, post office, plus mechanical and engineering services. Restaurants are available in the hotels plus the town is serviced by a cafe and roadhouses as well. In terms of accommodation there are hotels, motels, a caravan park, backpacker lodge, and nearby station stay, all of a fairly basic standard.

EXTERIOR PHOTOS



3D View of front of venue



Main Entry Doors to Venue



Side of Venue (Naughton St)



Rear of Venue (& Dressing Room doors)



Rear of venue, including space for car parking & truck parking



Load in access at Naughton St side of venue



Mt Magnet Cinema alongside ANZAC Hall



Mt Magnet Cinema (frontage)

GENERAL DESCRIPTION

This venue is very infrequently used, isn't given a lot of attention and hence is a little run down. The venue could be quite presentable though if given a good spring clean and some dollars were spent on fixing the minor problems they have throughout the venue. The venue appears it was built in the 70's and therefore in terms of regional town halls, its technically not all that old, but the age of the venue was hard to clarify as there was no official opening plate to be found anywhere. The venue also has an outdoor style cinema attached to the side of the building. The cinema has a brick façade which you enter the cinema through, but is an outdoor style cinema utilising ANZAC Hall on one side as a fence and a corrugated iron fence down the other side. It has a large "drive in" style screen and old metal pipe deckchairs with canvass drape covers. The cinema could probably hold 150 to 200 people, although I suspect there is only deck chair style seating for maybe 100 people.

The ANZAC Memorial Hall looks as though it would cater for around 400 to 500 people but there is a Certificate of Approval posted on the wall in the venue stating that it is licensed for 200 people from a health perspective. I'm not sure how many plastic chairs there are available for the venue, as I was unable to enter the storage shed at the time of Measure Up due to a key being snapped off in the padlock to this area, but by peering through the window there does appear to be a number of them. Likewise there also appears to be a number of tables and trestle tables. The venue is a typical country town hall style venue with a stage at one end of the hall and patron services (kitchen, toilets, lobby, etc) at the other end. The kitchen is fitted with fridges, cook tops and ovens. The venue has a reasonable roof height in the main room, but it is worth noting that there are no 50mm bars for hanging or flybars on stage and the onstage roof is quite low anyway.

Acoustically ANZAC Hall is a little live, but I believe it's quite manageable for live theatre and over similar performances. The venue does not have a blackout, but this could be achieved reasonably easy with approx 32m (4 x 8m) of border curtains. (Just remember to bring a large ladder (approx 4m+) to hang these blacks though!)

The venue has both male and female toilets suitable in size to match the venue's capacity and whilst the venue hasn't been built with disability access in mind it would appear that these toilets will cater for disability access (although not to Australian Standards).

ANZAC Hall also has a reasonable collection of furniture; including plastic chairs (multicoloured), occasional tables and trestle tables. There is no specific lighting and sound equipment for the venue but the council does own a package of audio, DVD/CD, projection and satellite equipment which has been designed and purchased for use with the outdoor cinema. The audio gear within the cinema equipment package, including amps, speakers, radio mic, CD player and could all be used for other performances or discos in ANZAC Hall if required though.

The auditorium floor is of a timber board finish and is in reasonably good condition. The stage also has a timber board floor and it too is in reasonable condition, although would be much more presentable with a good sanding and resealing. There are a couple of options to load into the venue, with a 1m wide door available at the back of the stage (probably at truck height roughly) or a set of double exit doors at the side of the venue that brings you in at auditorium floor level but right adjacent to the stage (this is probably the more practical load in access). There appears to be plenty of power available at the venue in relation to mains breakers, but in terms of plug 'n' play power there are 2 x 30amp 5pin 3phase outlets on stage and 1 x 50amp 5pin 3phase outlet & 1 x 20amp 5pin 3phase outlet in the Kitchen. There is an assortment of single phase 15A & 10A GPO's located on stage, in the kitchen and around the venue in general.

TOURING TIPS

- Tour all your own technical equipment (lighting, audio, etc).
- Tour all your own event/show staffing including any crew for load in/out.
- Bring your own large ladder.
- Bring your own black border curtains for blackout purposes, if you require a blackout.
- Whilst there is some minimal audio equipment available from council (Cinema Audio package) there is no mixing desk with this gear and speakers are only small and designed for cinema use primarily, hence it will pay to tour your own audio gear.
- Quality accommodation is certainly thin on the ground, if not non-existent in Mt Magnet and hence touring parties should be prepared for this when touring to Mt Magnet. Whilst there are plenty of accommodation options available they are all of a very low standard.
- Be careful with the in house venue electrics/power and patch systems in particular as they do have a number of problems and safety issues (in fact some sections are just down right dangerous) and do not currently meet any safety regulations.
- There were a number of safety issues with the operational nature of the venue at the time of Measure Up and hence I would further enquire with council as to the status of the venue before selecting it for touring to.

This is a type of venue where you collect the keys and are left to your own devices. The Community Development Officer within council would facilitate as much assistance as possible within the council's means though.

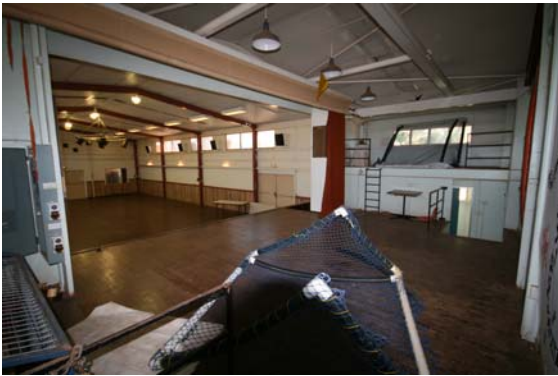
INTERIOR PHOTO'S



ANZAC Hall - looking towards main entry end of hall (from stage)



ANZAC Hall - looking towards stage end (from entry)



Stage in ANZAC Hall (from USP)



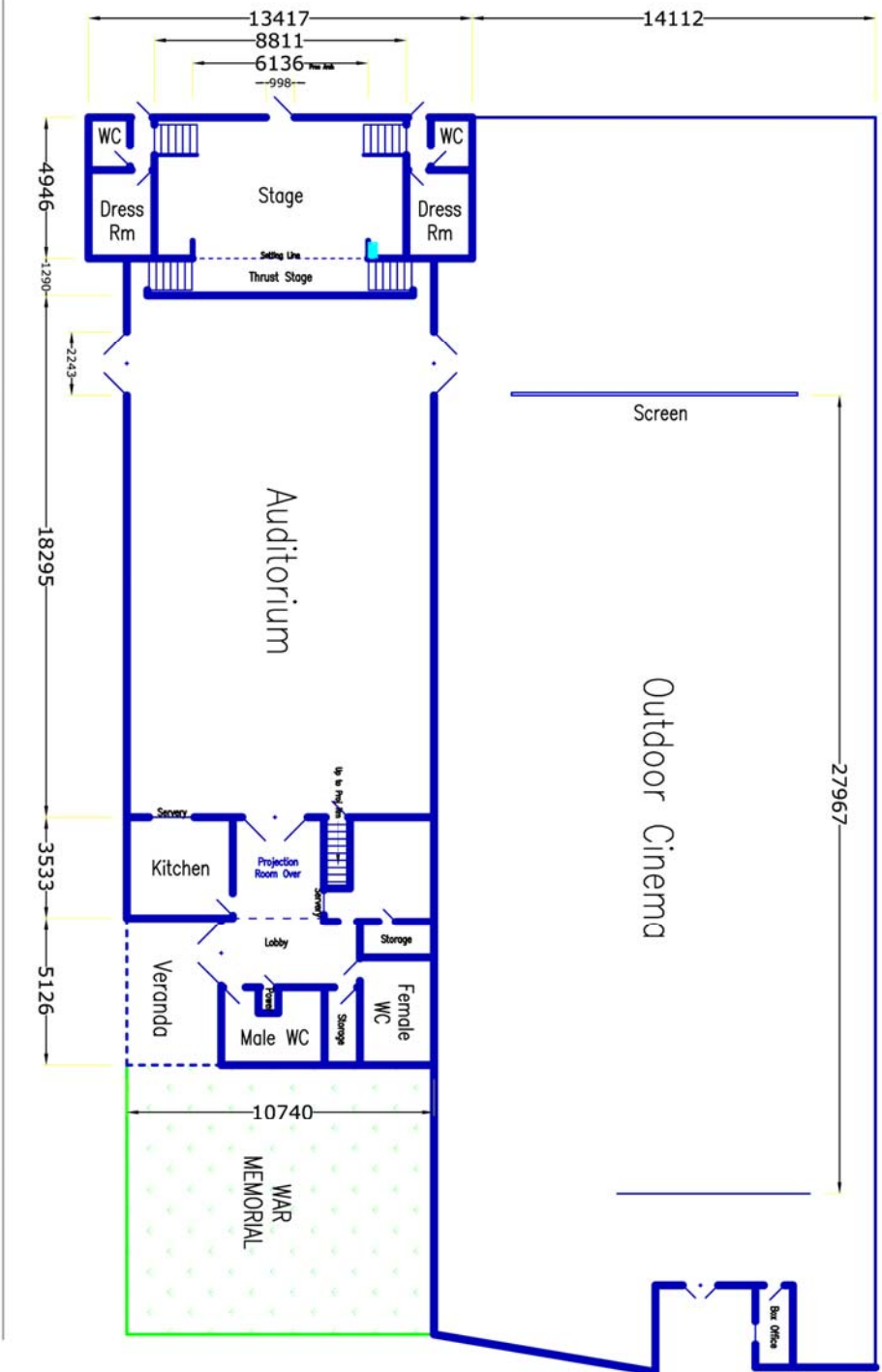
Mt Magnet Cinema (outdoor cinema next To ANZAC Hall, as seen on left of this pic)

DIMENSIONS - All dimensions in mm

STAGE DEPTH (setting line to back wall)	4946
STAGE WIDTH (inc wings)	8811
STAGE HEIGHT	1227
PROMPT WING	1337
OPPOSITE PROMPT WING	1337
STAGE THRUST (setting line to front of thrust stage or apron)	1290
STAGE FLOOR TO CEILING	3550
STAGE FLOOR TO LX BARS (or available rigging points)	3225
PROSCENIUM WIDTH	6136
PROSCENIUM HEIGHT	3034
AUDITORIUM DEPTH	18295
AUDITORIUM WIDTH	10740
AUD FLOOR TO CEILING Centre	5070
Outsides	4400
AUD FLOOR TO LX BARS	N/A

Mount Magnet ANZAC Memorial Hall and Mt Magnet Cinema

Mt Magnet Cinema



Mt Magnet ANZAC Memorial Hall	
DRAWN BY: Shannon Gobell	CHECKED BY:
DATE: 13/10/07	CITY/TOWN: Mount Magnet
SCALE: 1:200 (on A3)	TITLE: PLAN
DRAWING NO.: 1.0	
Prepared for Country Arts WA	

FLYING FACILITIES & DRAPES

FLYING SYSTEM	No flying system installed
MASKING	No masking, No blackout available
FOH CURTAIN	Yes, but one half of the FOH curtain is completely off the tab tracks. The tab track action has a "Do Not Use" safety tag fitted.
LEGS & BORDERS	None
OTHER DRAPES or CURTAINS	1 x roll up (sash & pulley) white canvass screen
CYCLORAMA	None

LIGHTING FACILITIES

3 PHASE POWER AND LOCATION	One(1) x 20Amp 5pin 3phase outlet AND one(1) x 50Amp 5pin 3phase outlet are available in the Kitchen, plus two(2) x 30Amp 5pin 3phase outlets are available in prompt corner onstage.
OPERATING POSITION (S)	There is a projection room at the back of the hall you could operate from, but I would simply recommend on the auditorium floor at the back of the room or from side of stage (maybe on one of the mezzanines if you are tight for wing space)
LIGHTING DESK	None
DIMMERS AND LOCATION	None
WIRED LIGHTING BARS NUMBER OF CIRCUITS AND LOCATIONS	No Lighting bars are fitted in this venue, but there are 12 Lx circuits spread around.
PATCHING FACILITIES	Patching facilities are available in Prompt corner of the stage for 12 distributed circuits spread around the venue. There is patch to 240volt GPO's, as there are no dimmers.
LAMP STOCK	4 x Par 38 (rigged at FOH) 1 x 10 pin spot head, rotating disco light 4 x Par 56 3 x Pin Spots <i>** Please note these are all hardwired together on a strange central lighting rig and hence can only be switched on and off together as one.</i>
ALTERNATIVE ONSTAGE LIGHTING POSITIONS	There are plenty of beams that you could rig trussing from for the purposes of hanging lighting in the ceiling above the stage. <i>**Please note this would not be very high though.</i>
ALTERNATIVE FRONT LIGHTING POSITIONS	Using girder clamps you could rig trussing from a traditional FOH position in the auditorium.
TYPE OF CEILING/ POSSIBLE FIXING POINTS	Fibro board ceiling. There are several beams in the ceiling as mentioned above that trussing could be rigged from if required.
BLACKOUT	No, but easily achieved with a ladder and 4 x 8m border curtains.
LADDERS	None in venue, bring with you.
ONSTAGE 10AMP OUTLETS	There is an assortment of 10amp & 15amp GPO's around the venue.
FOH 10AMP OUTLETS	As above.
HOUSELIGHTS	Mixture of fluros and incandescent floods, with standard light switches. Although the house light switched onstage do not appear to work.
WORKING LIGHTS	Mixture of fluros and floods, as above.

SOUND FACILITIES

OPERATING POSITION (S)	No specific position, but I would recommend the auditorium floor at the back of room.
SOUND DESK	None
AMPLIFIERS	None in venue, but there is one in the Councils "Cinema Equipment Package"
SPEAKERS	None in venue, but there are 3 x EV SX100E speakers (left, centre, right), 2 x EV ZX190 Speakers (left rear & right rear) & 2 x EV Eliminator Sub Speakers in the Councils "Cinema Equipment Package"
FOLDBACK	None
AMPS	None in venue, but there is a Alto Mistral 1500 power amplifier with the "Cinema Equipment Package"
MICROPHONES	None in venue, but there is a Chiayo Radio Mic with the "Cinema Equipment Package"
MIC STANDS	None
CD OR CASSETTE PLAYERS	None in venue, but again there is Onkyo DVD/CD Player with the "Cinema Equipment Package"
SENDS	N/A

COMMUNICATIONS

TALK-BACK	None
TELEPHONES	None in venue, but there are public phones across the road from the venue and access to a telephone in the council offices next door to the venue.
INTERNET	None, but the town has Next G and hence Bigpond wireless modems will work.

ONSTAGE FACILITIES

CROSSOVER	There is no crossover, but you could go out one dressing room, cross over outside the back of the venue and back in the other dressing room door.
WING SPACE	Very minimal wing space is available and there are staircases down through the stage floor to the dressing rooms to take into account as well. But approx 1337mm is available each side of stage.
TREADS TO FOH	There are staircases, one each side of stage, leading from the thrust stage down to the auditorium floor. These are inset into the thrust stage.
LADDER	None in venue, bring your own.
ROSTRA	None
BLUE WORKLIGHT	None fitted

FRONT OF HOUSE FACILITIES (FOH)

SEATING	There are a number of plastic chairs available for audience seating in the venue, but at the time of Measure Up I was unable to confirm exactly how many. Please speak further with the Community Development officer at council upon enquiring on the venue.
BOX OFFICE	There is a small space which can be used as a FOH Box Office in the venue, although it is effectively a servery type window and hence the space is not fitted with anything specifically.
BAR	No
KITCHEN	Yes, there is a small kitchen with a double door fridge, 2 x large oven/cooktop units and some bench space. There is a servery window from the Kitchen to the venue. The Kitchen is not soundproofed from the venue auditorium.
TOILETS	Male and female toilets are available
AIR CONDITIONING	Yes, There are 4 evaporative air conditioners fitted, these duct straight into the side of the venue with little sound proofing or ducting, hence are noisy when on high in particular.
HEATING	No

BACKSTAGE FACILITIES

GREEN ROOM	No
DRESSING ROOMS	There are two (2) 4/5 person dressing rooms, fitted with lights, benches and mirrors.
TOILETS	Yes, 1 x pan in each dressing room
SHOWERS	No
MIRRORS	Yes
LAUNDRY	No
IRONING	No

BUMP-IN ACCESS

ACCESS DESCRIPTION	A suitable load in can be achieved through the set of double doors on Naughton St side of the venue, as shown in the picture above. The load in is a flat load in from street level straight in to venue's auditorium floor level. There is an alternative load in door at stage height (possibly close to truck height too) but this is quite narrow and hence maybe not so practical.
LOADING DOOR SIZE	Double doors at side of venue are 2243mm wide. Single loading door at stage height is 998mm wide
EXTERIOR LIGHTING	Various fluros and floods are located on the exterior of the venue.
PARKING	Plenty of parking is available around the venue site, including plenty of space to move trucks and buses around.
STORAGE	A small internal storage space is available, although if using ANZAC hall you could store roadcases and the like in the secured outdoor cinema section and vice versa if using the cinema

EMERGENCY SYSTEMS

SMOKE ALARMS	No smoke alarms or fire alarm systems are fitted.
SPRINKLER SYSTEMS	None
FIRE EXTINGUISHERS	Yes, various extinguishers as per modern BCA requirements are fitted.
FIRE HOSES	None fitted
EMERGENCY EXITS	There are two main emergency exits for the venue and also the main entrance can be used as an emergency exit too.
EXIT SIGNS	Exit signs are fitted to all emergency doors.
MEDICAL CONTACT	There is no nominated medical contact for the venue. Please see medical contacts below.

PRE-SALES

TICKETING SYSTEM	Tickets sold through local shop outlets, the Council's Community Development Officer will assist in identifying ticket sales outlets.
ADVERTISING POSITIONS	None at venue, but a banner could be hung.
POSTERS/BANNERS	As above.
LOCAL PUBLICATIONS	The Midwest Times newspaper covers the Mount Magnet township and surrounding areas. The Geraldton Guardian also covers out to Mount Magnet. The Council tend to produce a number of flyers for local noticeboards and shop windows also.
LOCAL RADIO	There are few radio stations covering Mount Magnet in both AM & FM bands, but they include; Spirit Radio Network 6SAT (100.9fm), 6TAB (104.1fm), ABC Midwest & Wheatbelt 6ABCRR (105.7fm), Radio National 6ABCRN (107.3fm) and various am stations. For further information on radio stations in the area please refer to the following websites: http://www.ausradiostations.com/fmwa.html http://www.ausradiostations.com/amwa.html
WORD OF MOUTH	Word of mouth is a positive way to publicise something in Mount Magnet and providing media releases of detailed info to a number of key businesses (i.e. the three pubs) would certainly spread the word.

OTHER IMPORTANT CONTACTS

HOSPITAL/DOCTOR	Mount Magnet Health Centre can be contacted at: 08 9963 4102
PHARMACY	There is no chemist available in Mount Magnet with the closest being in Geraldton, but the Mount Magnet Health Centre may be able to help with any required medications.
HARDWARE	There are no hardware shops in Mount Magnet, so remember to bring spares with you. The closest hardware is in Meekatharra or Geraldton.
COUNCIL	Local Shire Office: 08 9963 4001
POLICE, FIRE, AMBULANCE	For all emergency services contact: 000 Local police can also be contacted on: 08 9963 4101
TAXI	No taxi service available
NEWSAGENT	There is a combined newsagency & post office in Hepburn St in Mount Magnet.
VISITOR CENTRE	Visitor Centre contact number is: 08 9961 4172
ACCOMODATION	There are only a few low grade accommodation options in Mount Magnet. I would suggest two accommodation options in particular given their size to facilitate a tour party, facilities and location; Grand Hotel-Motel: 08 9963 4110 Mt Magnet Hotel: 08 9963 4002