



Prepared by Shannon Gobell  
Consultant to Measure Up! 2007

#### **MT MAGNET RECREATION CENTRE**

Laurie St, Mount Magnet WA 6638  
Queries and bookings to Alice Kavanagh  
Ph: 08 9963 4001  
Fax: 08 9963 4133  
Email: recreation@mtmagnet.wa.gov.au

#### **LOCAL GOVERNMENT**

Shire of Mount Magnet  
Lot 163 Hepburn St  
Mount Magnet WA 6638

PO Box 62  
Mount Magnet WA 6638

Ph: 08 9963 4001  
Fax: 08 9963 4133  
Email: ceo@mtmagnet.wa.gov.au

#### **CITY/TOWN DESCRIPTION**

Mount Magnet is located 570 km north of Perth on the Great Northern Highway. Mount Magnet is a small township which now survives on a combination of gold mining and services for the surrounding pastoral area which boasts some of the largest sheep stations in Western Australia. The shire covers an area of 13,877sqm in the Mid West region of Western Australia, and has a population of approximately 1,180 people in the Shire. The town of Mount Magnet itself is the major residential area in the shire and has a population of approximately 727 people.

The town is well serviced by two supermarkets, two roadhouses, three hotels, cafe, butcher, nursing post, post office, plus mechanical and engineering services. Restaurants are available in the hotels plus the town is serviced by a cafe and roadhouses as well. In terms of accommodation there are hotels, motels, a caravan park, backpacker lodge, and nearby station stay.

## EXTERIOR PHOTOS



*3D View of front of venue*



*Front of Venue*



*Side of Venue (Laurie St)*



*Load in - under veranda and through double doors to the left*

## GENERAL DESCRIPTION

This venue is reasonably modern but very much set up as a small club house style venue for use with the sporting facilities attached (squash court, tennis courts, footy oval). It also has a large veranda area immediately in front of the venue. Venue capacity is approximately 50.

This space is acoustically good and could be used for very small performance, i.e. children's puppetry shows, etc but the show would need to be completely self contained as again the venue is not set up for performance at all. The venue is carpeted with windows across the oval side of the space. Whilst the venue is not brightly flooded with sunlight there is no blackout available in the space, but it could be easily achieved if blacks are toured.

There is limited power available in the venue with minimal 10/15Amp GPO's spread around the venue. A power box can be found outside the venue though (approx 10m away) and there is a 32Amp 5pin 3phase outlet on the side of this box.

There is no hanging ability for lighting or audio, but the venue does have some light weight timber trusses in the ceiling and hence something minimal in weight could be "jerry rigged" if absolutely required.

As the venue services football and other sports primarily there are 2 x footy change rooms with showers, male toilets and female toilets, a specific female change room and a kitchen. There is no storage space on site, but by negotiation I'm sure the squash court could be used in a pinch. The venue also has full disability access.

As mentioned there is also a veranda space which could be used for low profile bands and/or workshop type activities. The veranda faces out to the oval, so if used for bands then patrons could sit on the oval. It does have a very low roof though, not making it practical for professional performances.

## TOURING TIPS

- The venue is small and probably only holds approximately 50 adults or 80 children, hence is only suited to shows or workshops with very minimal equipment.
- Tour all your own technical equipment (lighting, audio, etc).
- Tour all your own event/show staffing including any crew for load in/out.
- Bring your own black border curtains for blackout purposes, if you require a blackout.
- Whilst there is some minimal audio equipment available from council (Cinema Audio package) there is no mixing desk with this gear and speakers are only small and designed for cinema use primarily, hence it will pay to tour your own audio gear.

This is a type of venue where you collect the keys and are left to your own devices. The Community Development Officer within council would facilitate as much assistance as possible within the council's means though.

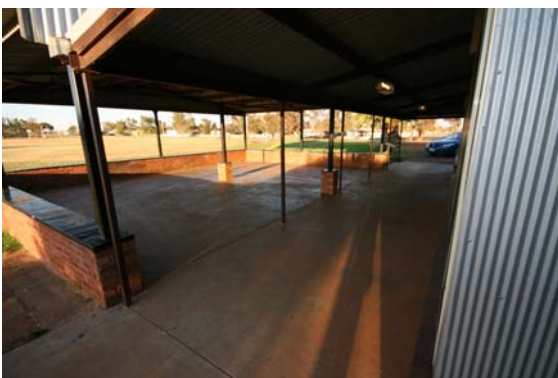
## INTERIOR PHOTO'S



*Rec Centre - looking towards main entry to space*



*Rec Centre - Inside*



*Veranda to Rec Centre*

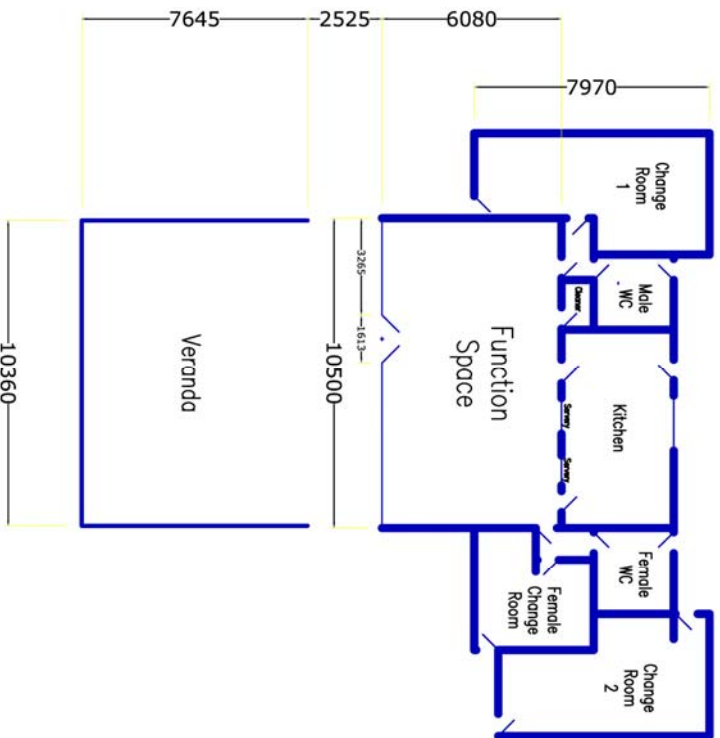


*Power box outside, with 3phase outlet*

**DIMENSIONS - All dimensions in mm**

STAGE DEPTH (setting line to back wall)	N/A
STAGE WIDTH (inc wings)	N/A
STAGE HEIGHT	N/A
PROMPT WING	N/A
OPPOSITE PROMPT WING	N/A
STAGE THRUST (setting line to front of thrust stage or apron)	N/A
STAGE FLOOR TO CEILING	N/A
STAGE FLOOR TO LX BARS (or available rigging points)	N/A
PROSCENIUM WIDTH	N/A
PROSCENIUM HEIGHT	N/A
AUDITORIUM DEPTH	6080
AUDITORIUM WIDTH	10500
AUD FLOOR TO CEILING Centre Outsides	(Kitchen side) 3690 (Veranda side) 2673
AUD FLOOR TO LX BARS	(floor to exposed timber truss is 2410)

# Mt Magnet Recreation Centre



Mt Magnet Recreation Centre	
DRAWN BY: Shannon Gobell	CHECKED BY:
DATE: 14/10/07	CITY/TOWN: Mount Magnet
SCALE: 1:200 (on A3)	TITLE: PLAN VIEW
DRAWING NO.: 1.0	
Prepared for Country Arts WA	

## FLYING FACILITIES & DRAPES

FLYING SYSTEM	No
MASKING	No masking, No blackout available
FOH CURTAIN	None
LEGS & BORDERS	None
OTHER DRAPES or CURTAINS	The windows have white lacy curtains on them
CYCLORAMA	None

## LIGHTING FACILITIES

3 PHASE POWER AND LOCATION	One(1) x 32Amp 5pin 3phase outlet is available outside on power box, approx 10m away.
OPERATING POSITION (S)	No specific location
LIGHTING DESK	None
DIMMERS AND LOCATION	None
WIRED LIGHTING BARS NUMBER OF CIRCUITS AND LOCATIONS	None
PATCHING FACILITIES	None
LAMP STOCK	None
ALTERNATIVE ONSTAGE LIGHTING POSITIONS	N/A
ALTERNATIVE FRONT LIGHTING POSITIONS	N/A
TYPE OF CEILING/ POSSIBLE FIXING POINTS	Gyprock ceiling with exposed timber ceiling trusses. These are light weight and not really suitable to fix anything from.
BLACKOUT	No, but easily achieved with some blacks
LADDERS	No
ONSTAGE 10AMP OUTLETS	Minimal GPO's in venue
FOH 10AMP OUTLETS	As above.
HOUSELIGHTS	Fluros
WORKING LIGHTS	N/A

## SOUND FACILITIES

OPERATING POSITION (S)	No specific location
SOUND DESK	None
AMPLIFIERS	None in venue, but there is one in the Councils "Cinema Equipment Package"
SPEAKERS	None in venue, but there are 3 x EV SX100E speakers (left, centre, right), 2 x EV ZX190 Speakers (left rear & right rear) & 2 x EV Eliminator Sub Speakers in the Councils "Cinema Equipment Package"
FOLDBACK	None
AMPS	None in venue, but there is a Alto Mistral 1500 power amplifier with the "Cinema Equipment Package"
MICROPHONES	None in venue, but there is a Chiayo Radio Mic with the "Cinema Equipment Package"
MIC STANDS	None
CD OR CASSETTE PLAYERS	None in venue, but again there is Onkyo DVD/CD Player with the "Cinema Equipment Package"
SENDS	N/A

## COMMUNICATIONS

TALK-BACK	None
TELEPHONES	None in venue, but there are public phones across the road from the venue (next to the oval).
INTERNET	None, but the town has Next G and hence Bigpond wireless modems will work.

## ONSTAGE FACILITIES

CROSSOVER	N/A
WING SPACE	N/A
TREADS TO FOH	N/A
LADDER	None in venue, bring your own, if required.
ROSTRA	None
BLUE WORKLIGHT	N/A

## FRONT OF HOUSE FACILITIES (FOH)

SEATING	There are a number of plastic chairs available for audience seating in the venue, but at the time of measure Up I was unable to confirm exactly how many. Please speak further with the Community Development officer at council upon enquiring on the venue.
BOX OFFICE	N/A
BAR	No
KITCHEN	Yes, there is a small kitchen with a double door fridge, cooking facilities and some bench space. There are 2 servery windows from the Kitchen to the venue. The Kitchen is not soundproofed from the venue auditorium.
TOILETS	Male and female toilets are available
AIR CONDITIONING	Yes, There are 2 air con systems, both an evaporated ducted system and two (2) refrigerated split systems.
HEATING	No, but refrigerated systems may be reverse cycle.

## BACKSTAGE FACILITIES

GREEN ROOM	No
DRESSING ROOMS	There are two footy style change rooms and also a female change room.
TOILETS	Yes
SHOWERS	Yes
MIRRORS	Yes
LAUNDRY	No
IRONING	No

## BUMP-IN ACCESS

ACCESS DESCRIPTION	A suitable load in can be achieved by loading from the car park on Laurie St side of the building, under the veranda and then through the set of double doors into the venue from under the veranda, as seen in picture above. The load in is a flat load in from street level straight in to venue's floor level.
LOADING DOOR SIZE	Double Doors at side of venue are 1613mm wide.
EXTERIOR LIGHTING	Various fluros and floods are located on the exterior of the venue. The oval is also lit very large sports field lighting.
PARKING	Plenty of parking is available around the venue site, including plenty of space to move trucks and buses around.
STORAGE	No storage space is available, although, with permission, the squash court may be made available.

## EMERGENCY SYSTEMS

SMOKE ALARMS	No smoke alarms or fire alarm systems were notably fitted.
SPRINKLER SYSTEMS	None
FIRE EXTINGUISHERS	Yes, various extinguishers as per BCA requirements are fitted.
FIRE HOSES	None fitted
EMERGENCY EXITS	There is one main emergency exit for the venue and this is also the main entry doors for the venue. Alternative exits can be achieved through the kitchen though.
EXIT SIGNS	None fitted.
MEDICAL CONTACT	There is no nominated medical contact for the venue. Please see medical contacts below.

## PRE-SALES

TICKETING SYSTEM	Tickets sold through local shop outlets, the Council's Community Development Officer will assist in identifying ticket sales outlets.
ADVERTISING POSITIONS	None at venue, but a banner could be hung.
POSTERS/BANNERS	As above.
LOCAL PUBLICATIONS	The Midwest Times newspaper covers the Mount Magnet township and surrounding areas. The Geraldton Guardian also covers out to Mount Magnet. The Council tend to produce a number of flyers for local noticeboards and shop windows also.
LOCAL RADIO	There are few radio stations covering Mount Magnet in both AM & FM bands, but they include; Spirit Radio Network 6SAT (100.9fm), 6TAB (104.1fm), ABC Midwest & Wheatbelt 6ABCRR (105.7fm), Radio National 6ABCRRN (107.3fm) and various am stations. For further information on radio stations in the area please refer to the following websites: <a href="http://www.ausradiostations.com/fmwa.html">http://www.ausradiostations.com/fmwa.html</a> <a href="http://www.ausradiostations.com/amwa.html">http://www.ausradiostations.com/amwa.html</a>
WORD OF MOUTH	Word of mouth is a positive way to publicise something in Mount Magnet and providing media releases of detailed info to a number of key businesses (i.e. the three pubs) would certainly spread the word.

## OTHER IMPORTANT CONTACTS

HOSPITAL/DOCTOR	Mount Magnet Health Centre can be contacted at: 08 9963 4102
PHARMACY	There is no chemist available in Mount Magnet with the closest being in Geraldton, but the Mount Magnet Health Centre may be able to help with any required medications.
HARDWARE	There are no hardware shops in Mount Magnet, so remember to bring spares with you. The closest hardware is in Geraldton.
COUNCIL	Local Shire Office: 08 9963 4001
POLICE, FIRE, AMBULANCE	For all emergency services contact: 000 Local police can also be contacted on: 08 9963 4101
TAXI	No taxi service available
NEWSAGENT	There is a combined newsagency & post office in Hepburn St in Mount Magnet.
VISITOR CENTRE	Visitor Centre contact number is: 08 9961 4172
ACCOMODATION	There are only a few low grade accommodation options in Mount Magnet. I would recommend two accommodation options in particular given their size to facilitate a tour party, facilities and location; Grand Hotel-Motel: 08 9963 4110 Mt Magnet Hotel: 08 9963 4002