

Norseman Town Hall
Prinsep Street, Norseman WA 6443

Produced by Alan Surgener
Consultant to **Measure Up!** 2006
Country Arts WA

Shire of Dundas
Tel: 08 9039 1205
Email: cdo@dundas.wa.gov.au
Web: www.dundas.wa.gov.au



GENERAL DESCRIPTION

A well maintained jarrah-floored hall with raised proscenium arch stage and an estimated concert style seating capacity of 250. The sightlines are good and the acoustics are fair.

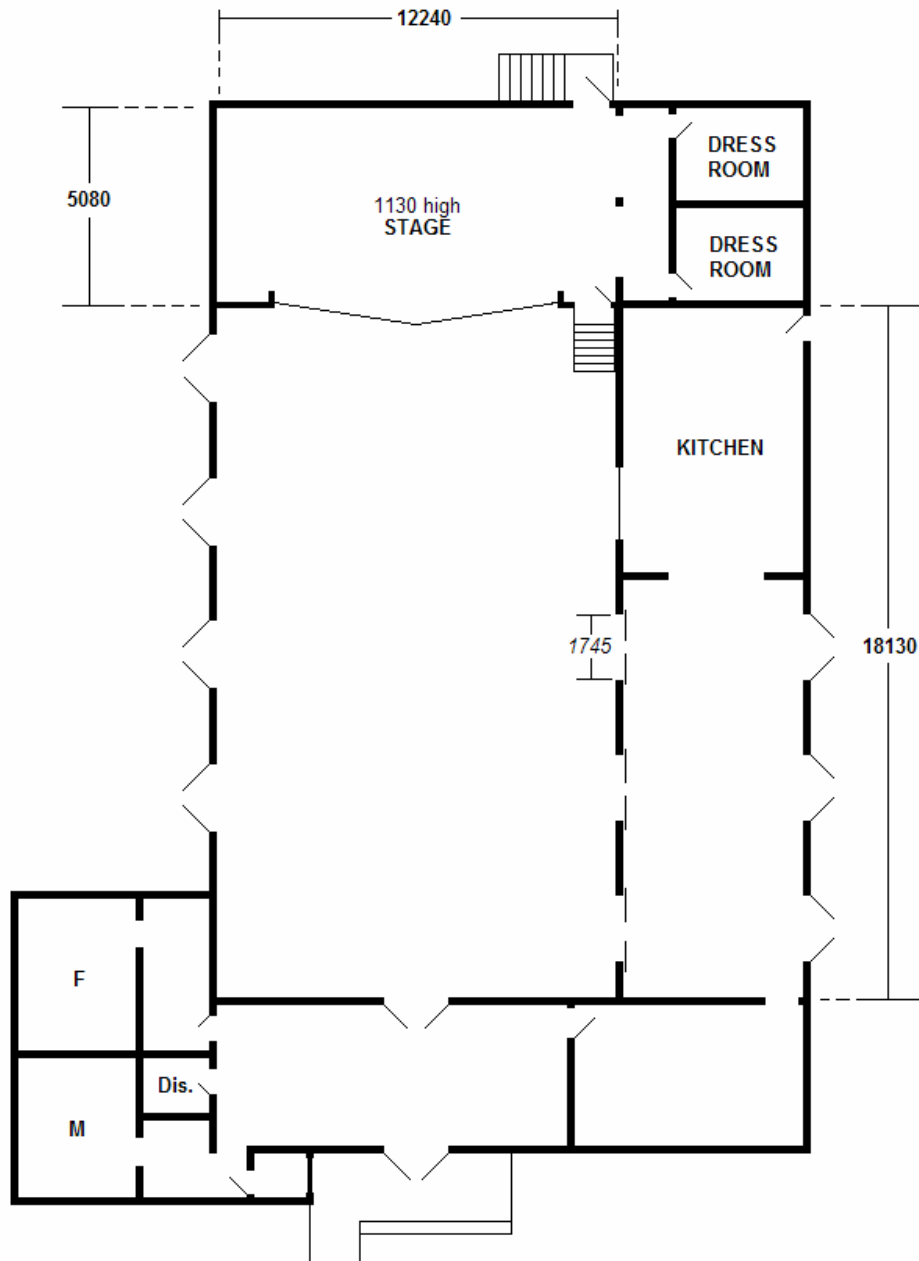
There are 20 amps of three-phase power supply onstage.

TOURING TIPS

- At the time of this report in 2006, the Shire was targeting funding to replace the masking and window curtains. At present the onstage masking is unusable so take it down and use your own.
- There are no fixed lighting positions either on or off stage.
- The 3-phase plug is a five pin Wilco, but only good for 20-amps.
- There are no ladders at the venue.
- There are old footlights mounted into the downstage edge of the stage floor.



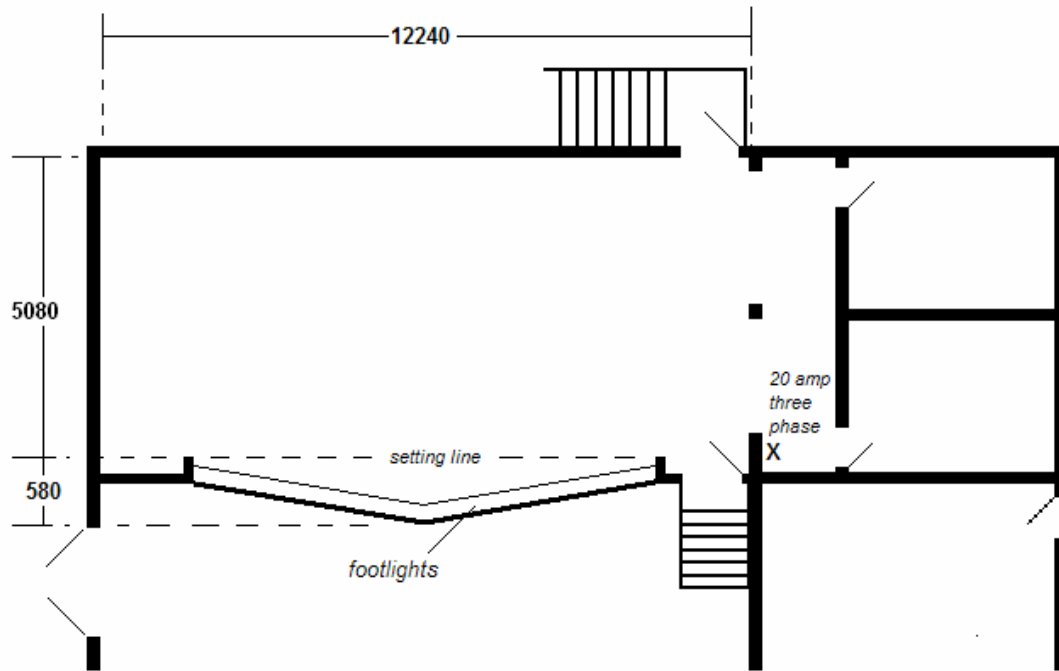
NORSEMAN TOWN HALL - FLOORPLAN



DIMENSIONS – All dimensions in mm

STAGE DEPTH	5080 * to setting line (see stage floorplan overleaf)
STAGE WIDTH	12240
STAGE HEIGHT	1130
STAGE THRUST	580 from setting line to front centre (see stage floorplan overleaf)
STAGE FLOOR TO CEILING	3045 at sides; 4335 at centre
STAGE FLOOR TO LX BARS	n/a
PROSCENIUM WIDTH	7640
PROSCENIUM HEIGHT	3170 at sides; 3980 at centre peak
AUDITORIUM DEPTH	18130
AUDITORIUM WIDTH	10650
AUD FLOOR TO CEILING	4250 at sides; 5150 at centre peak
AUD FLOOR TO LX BARS	n/a

Norseman stage floorplan



FLYING FACILITIES

FLYING SYSTEM	N
MASKING	Unusable. At time of writing, the Shire is planning to replace the masking.
CYCLORAMA	N

LIGHTING FACILITIES

3 PHASE POWER AND LOCATION	20 Amps (5 pin) down stage left.
OPERATING LOCATION (S)	N
LIGHTING DESK	N
DIMMERS AND LOCATION	N
WIRED LIGHTING BARS NUMBER OF CIRCUITS AND LOCATIONS	N
PATCHING FACILITIES	N
LAMP STOCK	N
ALTERNATIVE ONSTAGE LIGHTING POSITIONS	Exposed timber roof beams throughout.
ALTERNATIVE FRONT LIGHTING POSITIONS	Exposed reinforced steel joint 3000mm out from edge of stage.
TYPE OF CEILING/ POSSIBLE FIXING POINTS	Plaster, but reinforced steel joists in ceiling exposed.
BLACKOUT	N
LADDERS	N

ONSTAGE 10AMP OUTLETS	One on centre stage left, one on centre stage right.
FOH 10AMP OUTLETS	Three in total – one at rear left, one either side of stage.
HOUSELIGHTS	Flourescents
WORKING LIGHTS	N

SOUND FACILITIES

OPERATING POSITION (S)	N
SOUND DESK	N
AMPLIFIERS	N
SPEAKERS	N
FOLDBACK	N
MICROPHONES	N
MIC STANDS	N
CD OR CASSETTE PLAYERS	N
SENDS	N

COMMUNICATIONS

TALK-BACK	N
TELEPHONES	N
INTERNET	N

ONSTAGE FACILITIES

CROSSOVER	N
WING SPACE	3000mm on stage left, 2000mm on stage right.
TREADS TO FOH	Fixed down stage left.
LADDER	N
ROSTRA	N
BLUE WORKLIGHT	N

FRONT OF HOUSE FACILITIES (FOH) Relates to audience and front staff

SEATING	150 plastic chairs 10 x trestle tables
BOX OFFICE	Small kiosk at front entrance
BAR	Kitchen servery hatch
KITCHEN	Y
TOILETS	Y
AIR CONDITIONING	Fans
HEATING	N

BACKSTAGE FACILITIES

GREEN ROOM	N
DRESSING ROOMS	2 small dressing rooms – no running water.
TOILETS	FOH only, no toilets backstage.
SHOWERS	N
MIRRORS	Y
LAUNDRY	N
IRONING	N

BUMP-IN ACCESS

ACCESS DESCRIPTION	Either through front or side double doors. Tip: Mark off the doors early to prevent the public from parking in front of your access to the building.
LOADING DOOR SIZE	1750mm wide x 2100mm high
EXTERIOR LIGHTING	N
PARKING	Plenty
STORAGE	Y

EMERGENCY SYSTEMS

SMOKE ALARMS	N
SPRINKLER SYSTEMS	N
FIRE EXTINGUISHERS	Y
FIRE HOSES	N
EMERGENCY EXITS	Y
EXIT SIGNS	Y
MEDICAL CONTACT	

PRE-SALES

TICKETING SYSTEM	Through Shire of Dundas
ADVERTISING POSITIONS	
POSTERS/BANNERS	
LOCAL PUBLICATIONS	Through Shire of Dundas
LOCAL RADIO	
WORD OF MOUTH	

FRIENDLY NEIGHBOURS

DOCTOR	
HARDWARE	
PUBLICAN	Gary and Ron at The Railway Hotel
NEWSAGENT	
PEOPLE TO INFORM	