

Peter Reid Memorial Hall
St. Peters Way, Wyndham WA 6740

Produced by Alan Surgener
Consultant to **Measure Up!** 2006
Country Arts WA

Shire of Wyndham East Kimberley
Kununurra Office Tel: 08 9168 4100
Web: www.thelastfrontier.com.au



GENERAL DESCRIPTION

The interior of this 1980's building is pleasantly surprising. The proportions work well with capacity for 300 people. The stage height suits the auditorium's sightlines, and the stage depth of almost 6 metres makes it an option for most small touring shows. There is enough ceiling height to provide good lighting positions. The venue's acoustics are reasonable.

There is 3-phase power onstage servicing 36 wired circuits.

Load-in to the venue is very easy, direct onto the back of the stage. There are separate backstage dressing rooms with showers and toilets for the performers, and a bar in the auditorium for the audience.

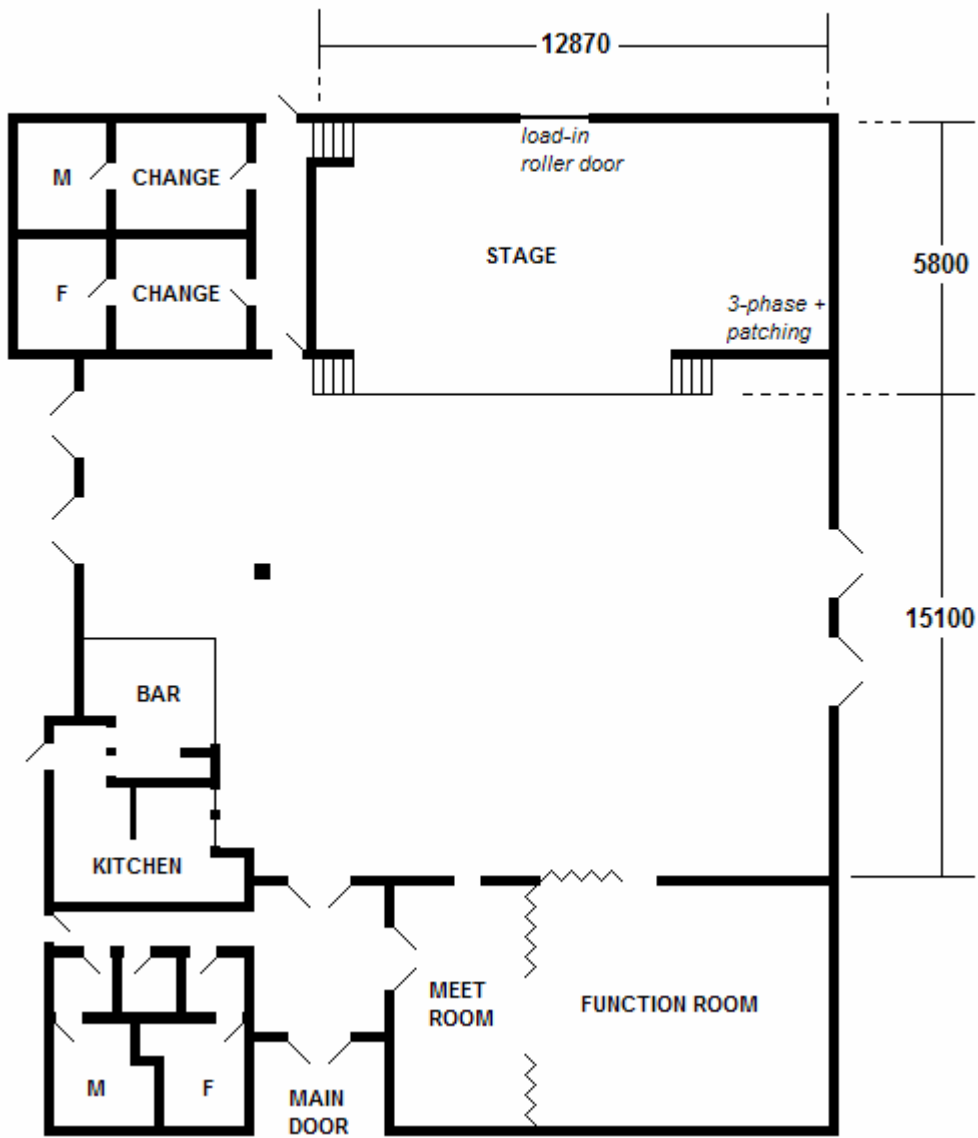
And guess what! The stage was painted black! And the auditorium is air-conditioned! You could have a good fun night in here.

TOURING TIPS

- With only a couple of hours to assess the Hall, the consultant did not check the patching on the bars. There is 8 sockets on each bar, with only 32 tails servicing four lighting bars and two FOH booms in the auditorium. The consultant believes the front of house circuits are all paired centre-out, which would mean 4 paired circuits on the bar and 2 circuits on each of the booms.
- No daytime blackout and no ladders.
- No onstage crossover (space at the back of the stage for performers to cross without being seen by the audience).



PETER REID MEMORIAL HALL - WYNDHAM



DIMENSIONS – All dimensions in mm

Stage Depth	5,800
Stage Width	12,870
Stage Height	865
Stage Thrust	900
Stage Floor To Ceiling	4,520
Stage Floor To LX Bars	4,300
Proscenium Width	7,880
Proscenium Height	3,600
Auditorium Depth	15,100
Auditorium Width	1,400
Auditorium Floor To Ceiling	5,250
Auditorium Floor To LX Bars	4,900

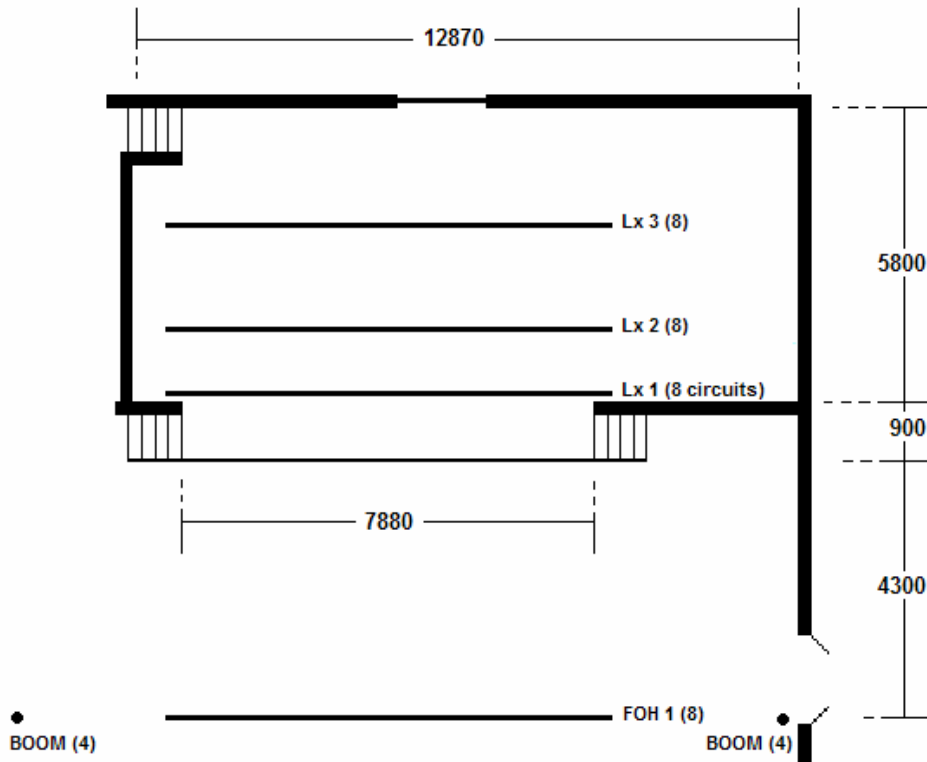
FLYING FACILITIES

Flying System	N
Masking	1x pulley action gold house tab 2 x 900 deep thin cotton black LX borders
Cyclorama	N

LIGHTING FACILITIES

3 phase power and location	1 x 30 amp and 1 x 20 amp DSL
Operating location (s)	None fixed
Lighting desk	1 x 12 channel 2 preset manual Jands Stagemaster 12
Dimmers and location	1 x 12 channel Jands CCT Multipak With 32 circuit patch panel DSL
Wired lighting bars number of circuits and locations	3 x 8 channel bars onstage each approx 8m long 1 x 8 channels FOH LX bar 4300 from edge of stage 2 x 2000 long FOH side booms with 4 channels each (see interior photo) *The consultant believes the FOH bar and booms are paired, sharing a total of 8 circuits each.
Patching facilities	32 circuit patch panel DSL
Lamp stock	4 x mini-fresnels
Alternative onstage lighting positions	N
Alternative front lighting positions	Exposed main roof RSJ in centre of auditorium, 9300 from edge of stage
Type of ceiling/ Possible fixing points	Suspended Hardiflex panels
Blackout	N
Ladders	N
Onstage 10amp outlets	1 in each DS corner
Foh 10amp outlets	2 x double in rear corners 1 x double side wall SL of auditorium
Houselights	Flouros
Working lights	Flouros

PRM STAGE - WYNDHAM



SOUND FACILITIES

Operating Position (S)	None fixed
Sound Desk	
Amplifiers	
Speakers	
Foldback	
Microphones	
Mic Stands	
CD Or Cassette Players	
Sends	

COMMUNICATIONS

Talk-Back	
Telephones	
Internet	

ONSTAGE FACILITIES

Crossover	N
Wing Space	1000 on SR and 3000 on SL
Treads To FOH	A pair of fixed steps 850mm wide on either side of stage thrust
Ladder	N
Rostra	N
Blue Worklight	N

FRONT OF HOUSE FACILITIES (FOH) Relates To Audience and Front Staff

Seating	Loose plastic chairs
Box Office	N
Bar	Y in Auditorium
Kitchen	Y
Toilets	Y
Air Conditioning	Y
Heating	N

BACKSTAGE FACILITIES

Green Room	N
Dressing Rooms	Y
Toilets	Y
Showers	Y
Mirrors	Y
Laundry	N
Ironing	N

BUMP-IN ACCESS

Access Description	Rear roller door at truck height directly onto upstage centre
Loading Door Size	2100h X 1760w
Exterior Lighting	Flouro beside roller door
Parking	Plenty
Storage	6000 x 6000 dance floor side of auditorium

EMERGENCY SYSTEMS

Smoke Alarms	N
Sprinkler Systems	N
Fire Extinguishers	Y
Fire Hoses	Y
Emergency Exits	Y
Exit Signs	Y
Medical Contact	

PRE-SALES

Ticketing System	
Advertising Positions	
Posters/Banners	
Local Publications	
Local Radio	
Word Of Mouth	

FRIENDLY NEIGHBOURS

Doctor	
Hardware	
Publican	
Newsagent	
People To Inform	